

Dealing with Brian Cox Massively Distributed Science



Chris Lintott
University of Oxford







GALAXY ZOO.org

Welcome | Home | The Science | How to Take Part | Galaxy Analysis | Forum | Press & News | FAQ | Links | Contact Us | Login | Register

- Galaxy Tutorial
- Galaxy Analysis

Galaxy Analysis

Welcome to Galaxy Zoo's view of the Universe. If you're here you should already have seen the [Tutorial](#), but feel free to go and remind yourself. There's no need to agonise for too long over any one image, just make your best guess in each case.



Show Grid Overlay on the next Image

Galaxy Ref:
588010880371851294

Choose the Galaxy Profile
by clicking the buttons
below



... stories

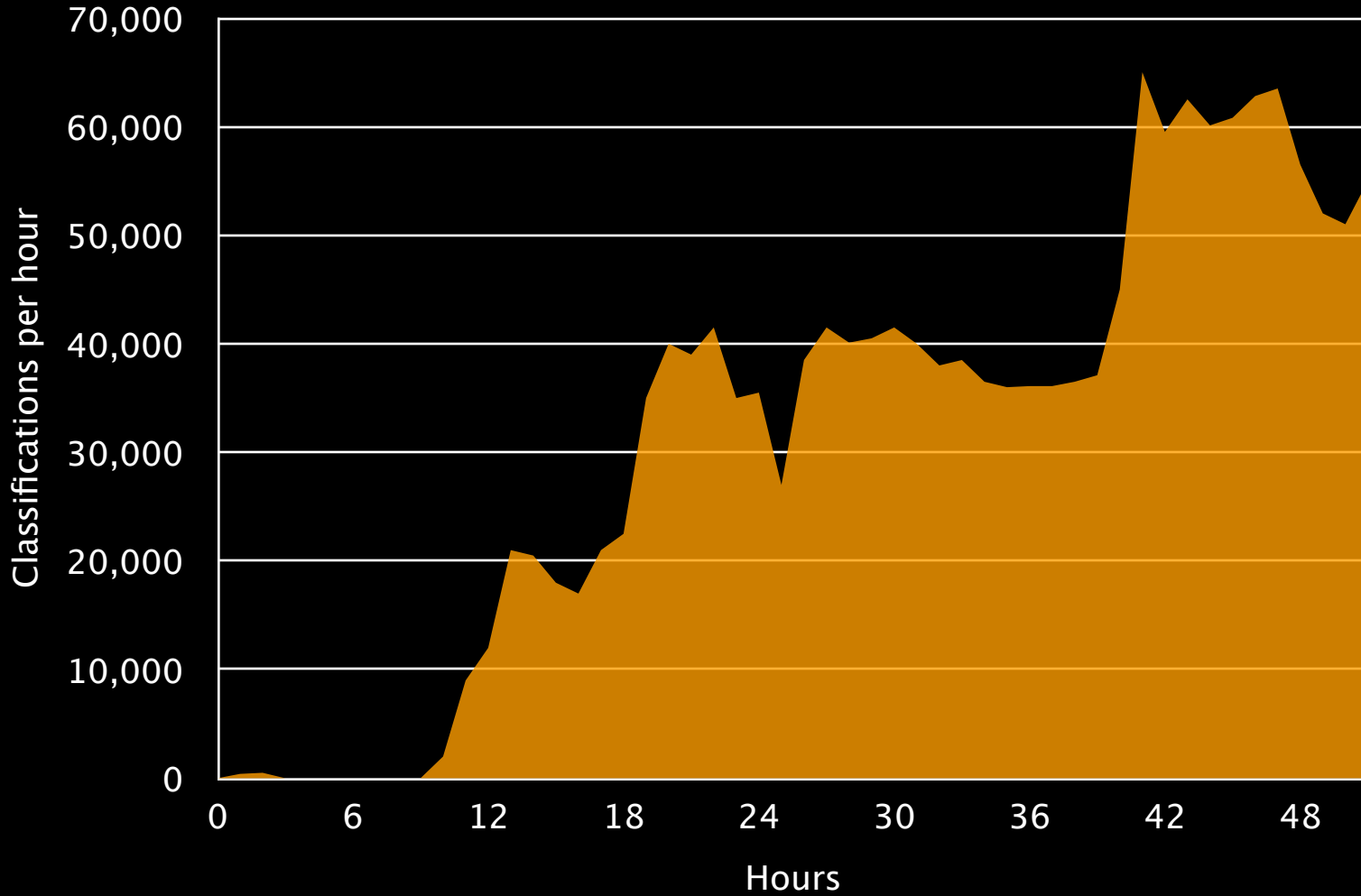
MOST POPULAR STORIES NOW

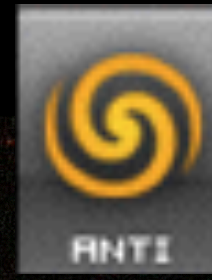
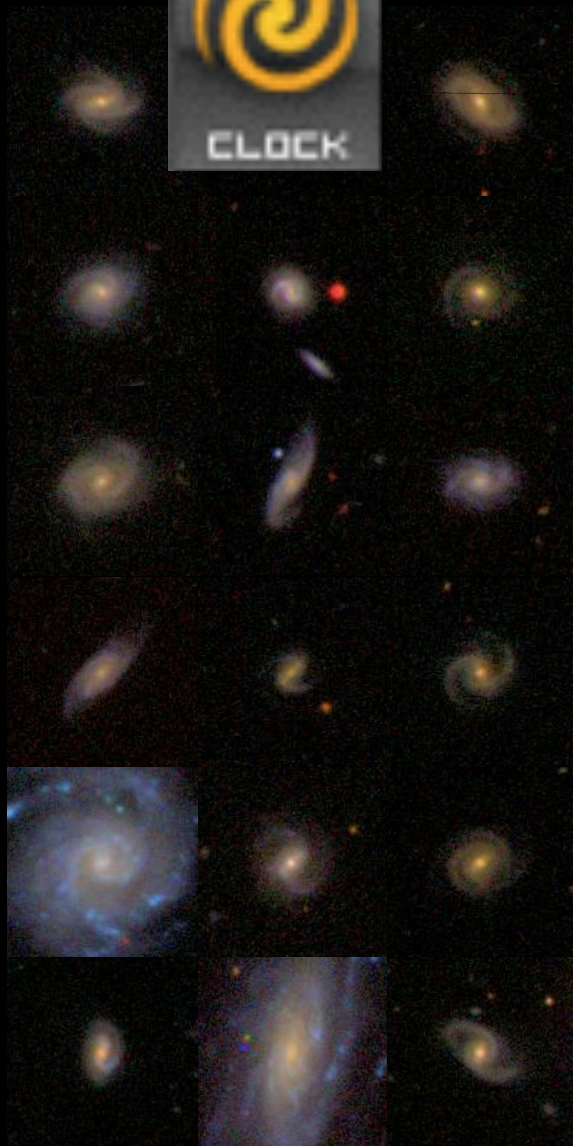
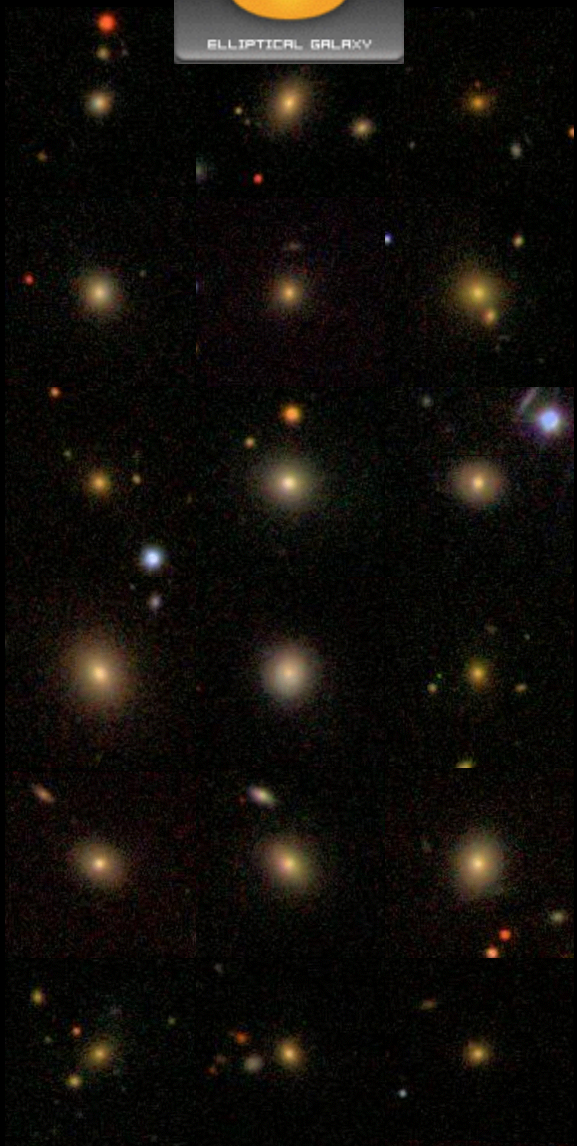
MOST E-MAILED

MOST READ

- 1 Moles 'good indicator to ageing'
- 2 Huge dog is reluctant media star
- 3 Scientists seek galaxy hunt help
- 4 'My mother held me down'
- 5 Man flies to wedding a year early

▶ Most popular now, in detail











Credit: Lisa Notermans.

Hanny's Voorwerp
HST ACS/WFC, WFC3/UVIS/IR
WIYN







10,000
volunteers

classifications

150,000



Whale FM: Listen to whale calls to decode their language

whale.fm

H.M.S. "Pegasus Th", Thursday 2 nd day of														
From Archangel, To Dundee or At														
Time	Patent Log	Distance Run		True Course	Revolutions per minute	Wind		Weather	State of the Sea	Height of Barometer and attached Thermometer	Temperature			Position
		Miles	Tenths			Direction	Force				Air	Wet Bulb	Sea	
0100	1399	10	8	357W	161									
0200	1410.1	11	1	---	"									2.30 ex 30
0300	1422.5	12	4	---	"									
0400	1433.2	10	7	---	"	SxS	8	occ	b	29.81 56	52	50	42	14.0
0500	1445.6	12	4	---	"									6.0 Hands
0600	1456.0	10	4	---	"									
0700	1466.2	10	2	---	"									
0800	1479	12	8	---	"	SxS	8	occ	b	29.66 58	52	50	41	8.0
0900	1490.3	11	3	37 ²⁸ W	"									9.0 Sighted Feb 1 9.15 9c S 25W 10.22 8Kang 15.1
1000	1500.9	8	0	---	"									

25,000
volunteers

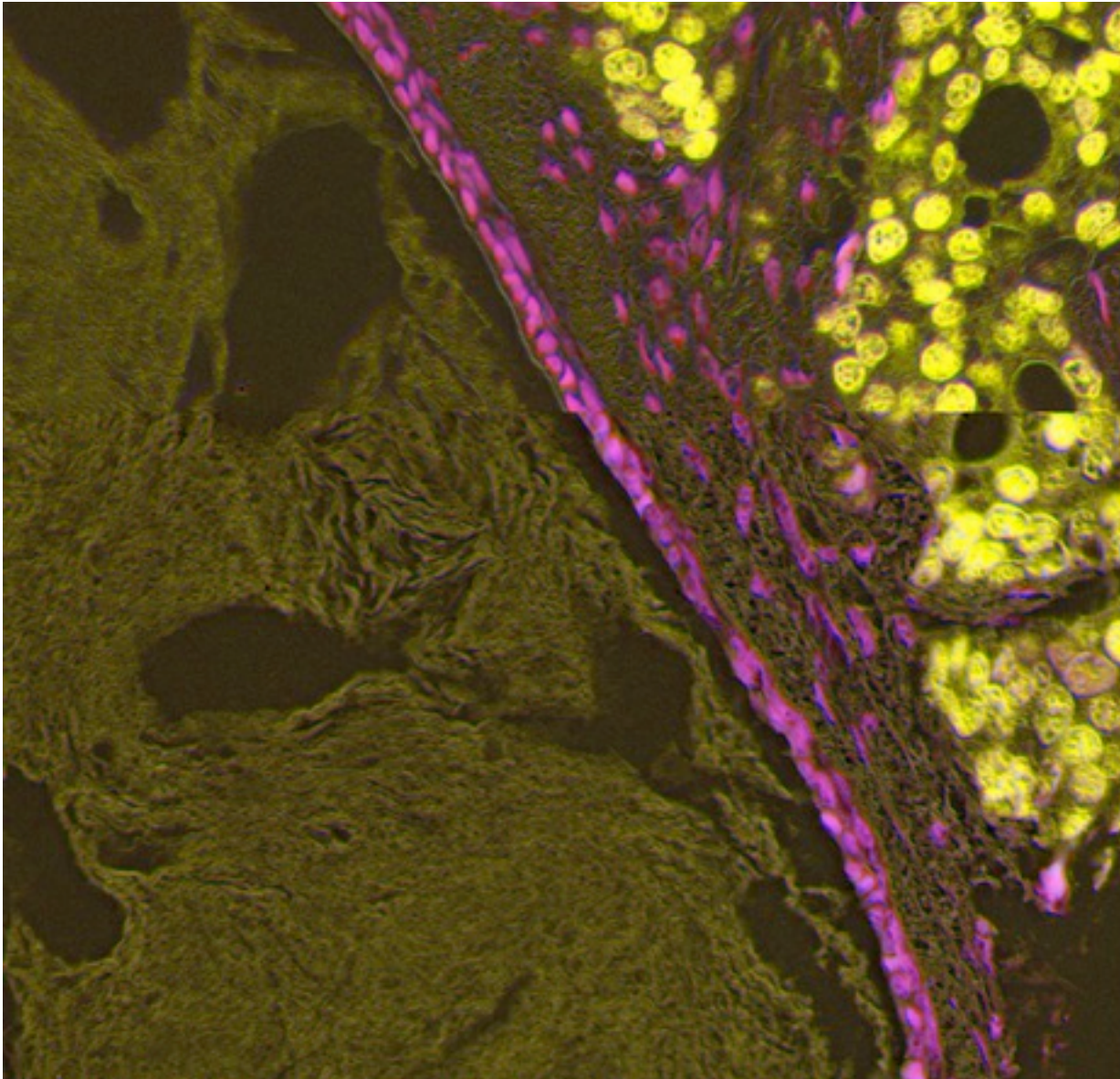
pages

1,000,000



Old Weather: transcribe the logs of WW1 vessels as they travel the globe, collecting valuable climate data

oldweather.org



24
hours

classifications

19,000



Cell Slider: answer simple questions about medical data to help the effort to find treatments for breast cancer.

cellslider.net

Zooniverse - Real Science

https://www.zooniverse.org

EN Projects About us Signed in as: zookeeper

ZOONIVERSE
REAL SCIENCE ONLINE

Take part in Science Projects Experiment in Laboratory

With your help, we are looking for planets around other stars

planethunters.org

All Space Climate Humanities

Space

Sort by Category

How do galaxies form?
NASA's Hubble Space Telescope archive provides hundreds of thousands of galaxy images.

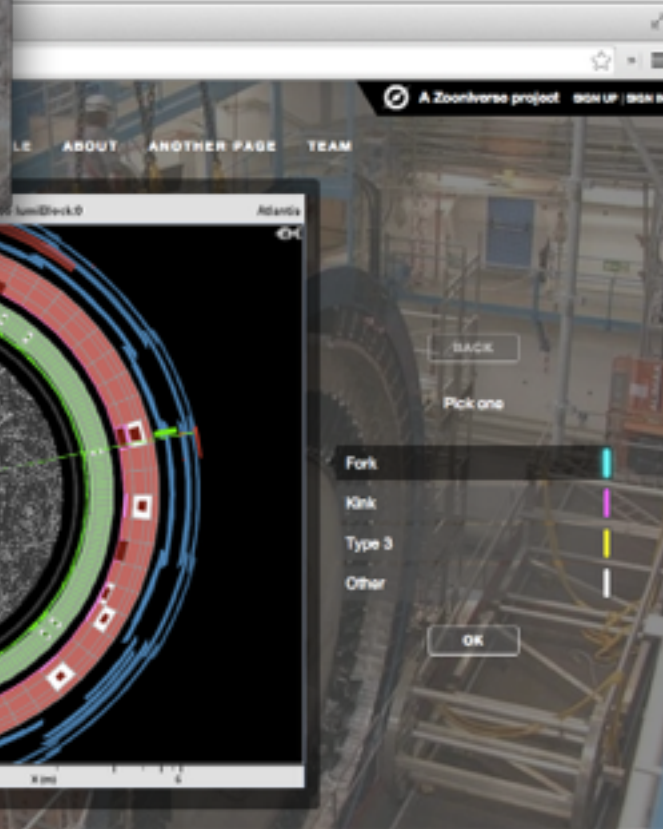
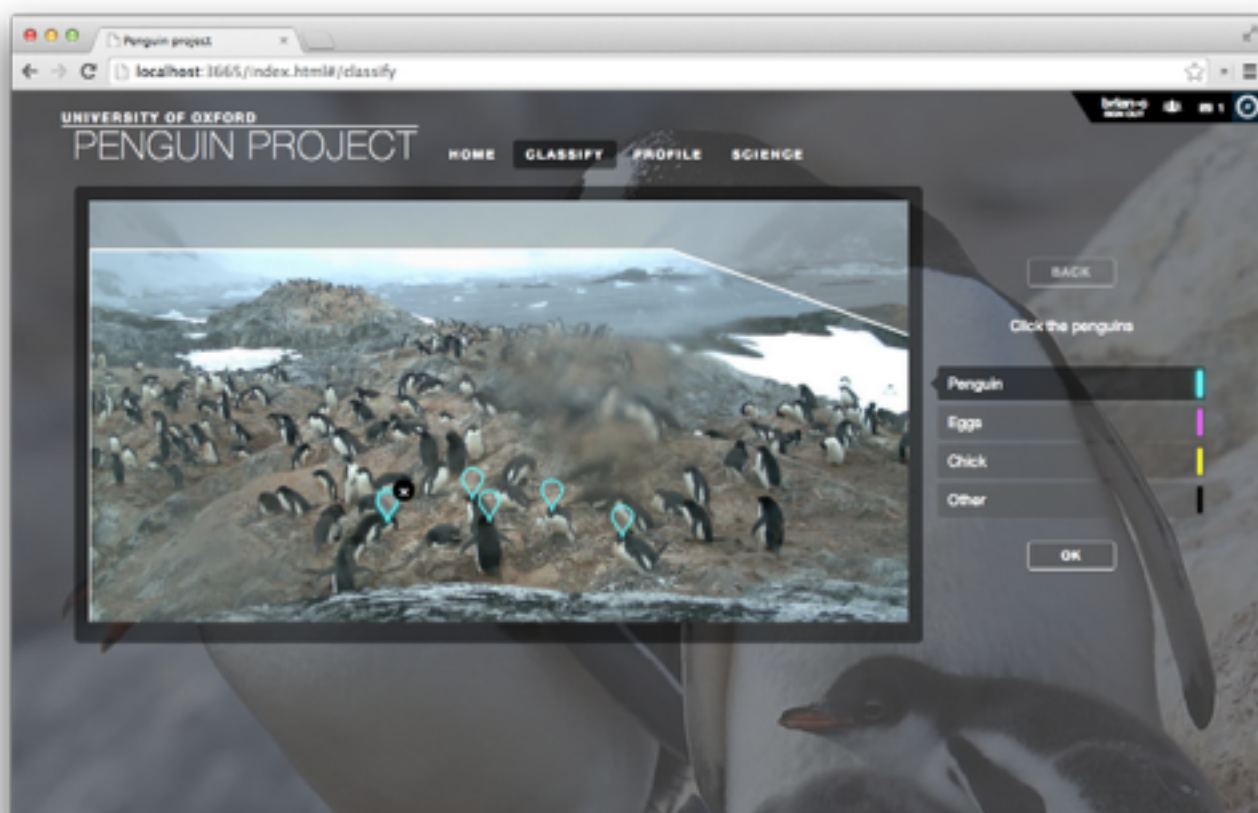
Explore the surface of the Moon
We hope to study the lunar surface in unprecedented detail.

Study explosions on the Sun
Explore interactive diagrams to learn out about the Sun and the spacecraft monitoring it.

How do galaxies merge?
One important area of research in astronomy studies the role of interacting galaxies.

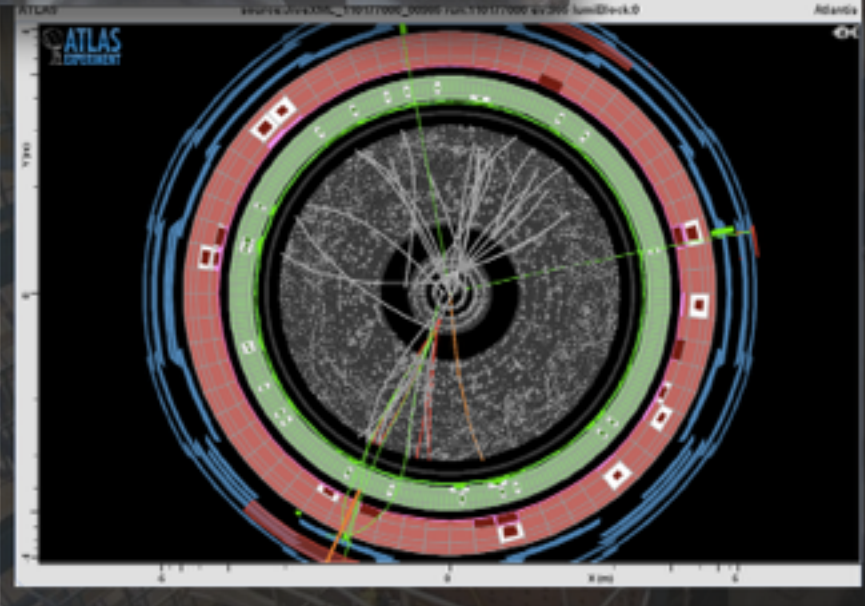
DSL and tools for project building

```
"classification": {  
  "firstStep": "pickOne",  
  
  "pickOne": {  
    "type": "button",  
    "question": "Choose one",  
    "choices": [{  
      "value": "default",  
      "image": "//placeholder.it/100.png",  
      "label": "Default"  
    }, {  
      "value": "specific",  
      "image": "//placeholder.it/100.png",  
      "label": "Specific"  
    }],  
    "next": "pickAnotherOne"  
  },  
}
```



www.github.com/zooniverse/Panoptes

[www.github.com/zooniverse/
Panoptes-front-end](https://www.github.com/zooniverse/Panoptes-front-end)



Milkman

Search

Random Image

Coords: 351.1968, 0.6718

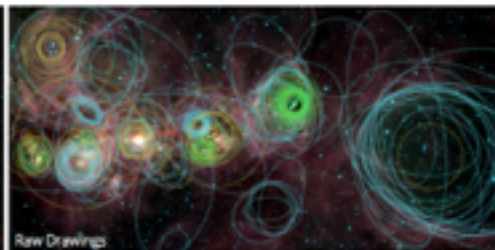
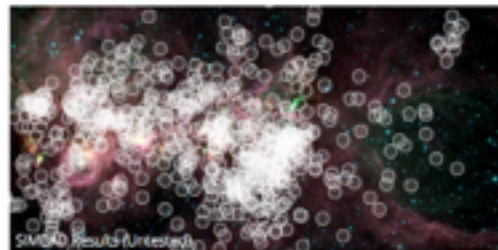
Size: 0.5000x0.2500

Volunteers: 50

Talk: [AMW0002wH](#)



Type	GLON	GLAT	X (px)	Y (px)	RX	RY	PA*
Bubble	351.1359 ± 0.1236	0.6783 ± 0.1233	302.6 ± 2.2	189.6 ± 2.8	19.1	15.7	41.7
Bubble	351.0181 ± 0.1221	0.6395 ± 0.1226	114.1 ± 4.7	251.7 ± 3.9	28.3	29.8	40.4
Bubble	351.0253 ± 0.1234	0.6909 ± 0.1227	125.6 ± 2.6	169.4 ± 3.8	26.2	14.2	42.5
Cluster	350.9904 ± 0.1291	0.7502 ± 0.1212	69.8 ± 3.0	66.6 ± 6.1	29.6	29.6	47.0
Cluster	351.1514 ± 0.1219	0.6650 ± 0.1231	327.4 ± 5.0	210.8 ± 3.1	27.7	27.7	41.4
Cluster	350.9740 ± 0.1212	0.6465 ± 0.1219	43.6 ± 6.1	240.5 ± 5.0	20.5	20.5	40.8
Cluster	351.0759 ± 0.1228	0.6624 ± 0.1236	206.6 ± 3.5	215.0 ± 2.2	24.4	24.4	42.8
Cluster	351.0245 ± 0.1194	0.6489 ± 0.1218	124.3 ± 9.0	236.7 ± 5.2	26.0	26.0	40.3
EGO	351.2329 ± 0.1225	0.6994 ± 0.1231	457.8 ± 3.9	150.8 ± 3.1	23.5	23.5	46.1
EGO	351.1424 ± 0.1210	0.6580 ± 0.1221	312.9 ± 6.5	230.1 ± 4.7	15.5	15.5	42.8
EGO	350.9738 ± 0.1218	0.6465 ± 0.1200	43.2 ± 5.2	243.6 ± 8.0	16.5	16.5	46.0



MILKMAN DELIVERS DATA FOR THE ZOONIVERSE'S MILKY WAY PROJECT

INCLUDES K2/SM CLASSIFICATIONS UP TO MARCH 4TH, 2014 10:18
 MILKMAN IS OPEN SOURCE AND ON GITHUB - EMAIL ROBB@ZOOONIVERSE.ORG

www.github.com/tfnrob/milkman

Goggle Boxes

Hours spent...

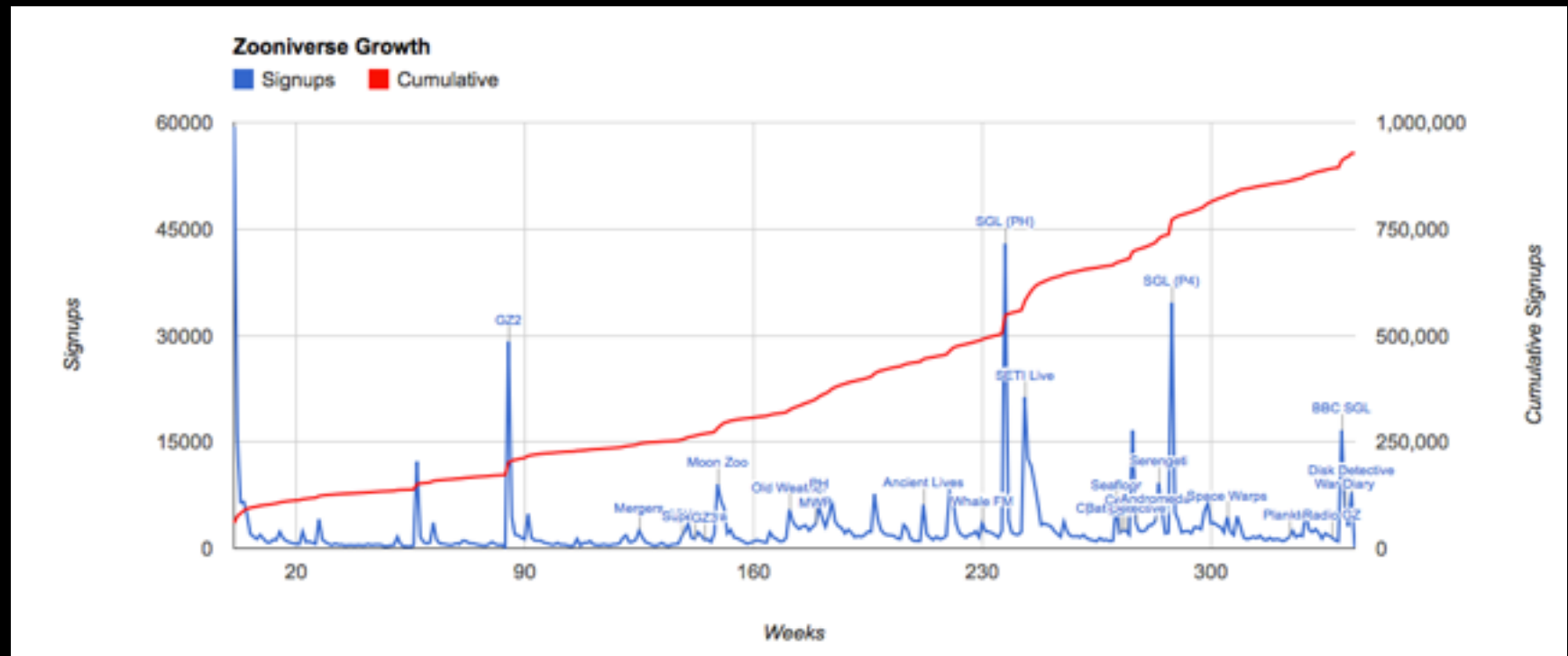
200 billion hours
a year spent watching TV by US adults

16 years every hour!

100 million hours
to create Wikipedia



// source: Cognitive Surplus by Clay Shirky // InformationIsBeautiful.net



PlanetHunters
 240,196 likes · 12,453 talking about this

Update Page Info Liked Following

planethunters.org

CLASSIFY ZOOKEEPER ABOUT CANDIDATES TALK TUTORIAL PLANETOMETER

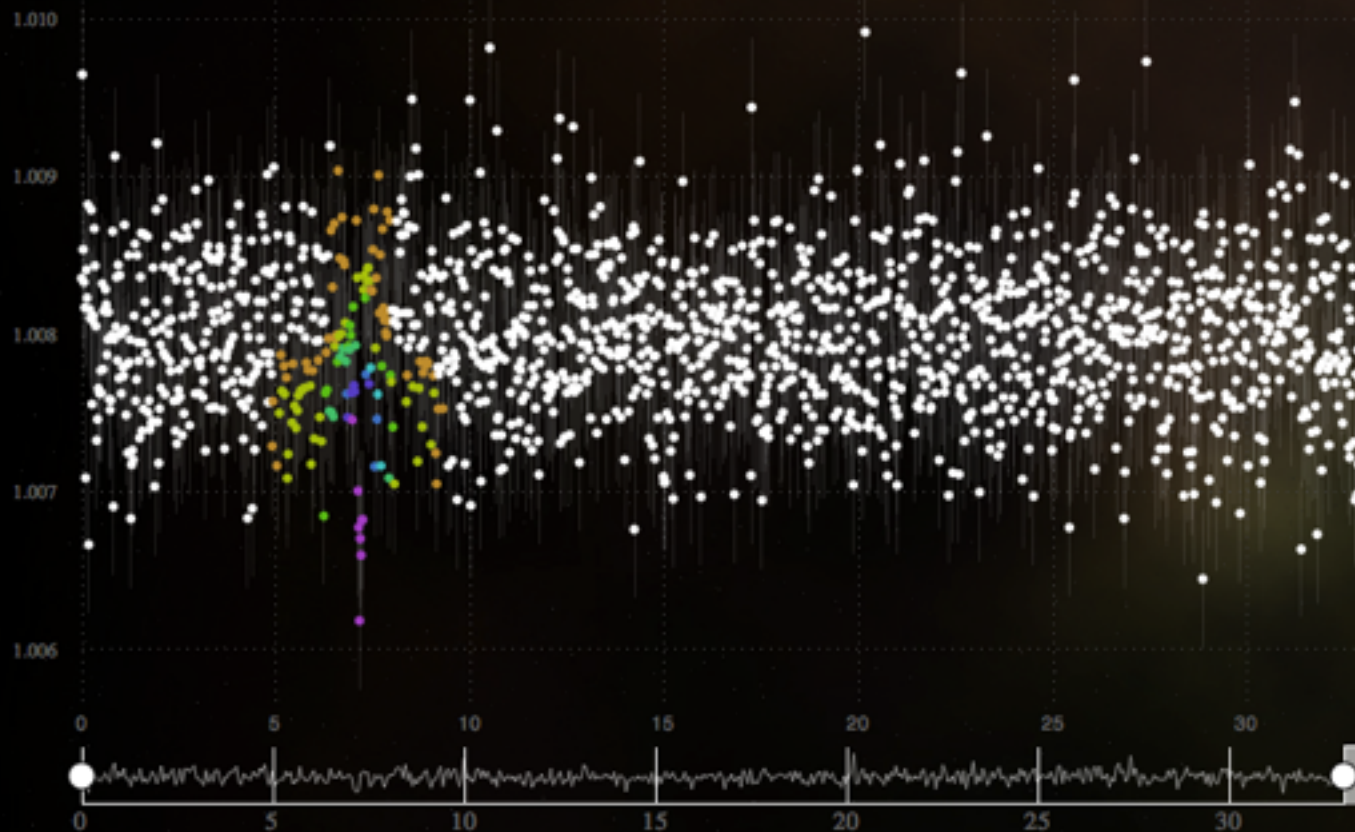
Welcome to planet hunters.

With your help, we are looking for planets around other stars

Start hunting for planets >

POWERED BY KEPLER
PUBLIC DATA

View: **Quarter 1.0** Quarter 2.2 Quarter 2.1 Quarter 2.3



POWERED BY Google

[Terms of Use](#)

Type of star:	Dwarf
Apparent visual magnitude:	15.2
Temperature	4656 (K)
Radius	1x Sol

talk.planethunters.org/objects/A

All 5 transits were isolated and stacked, a 15-point moving average calculated and a transit curve fitted to that:

KID 8552719 folded at 88.408

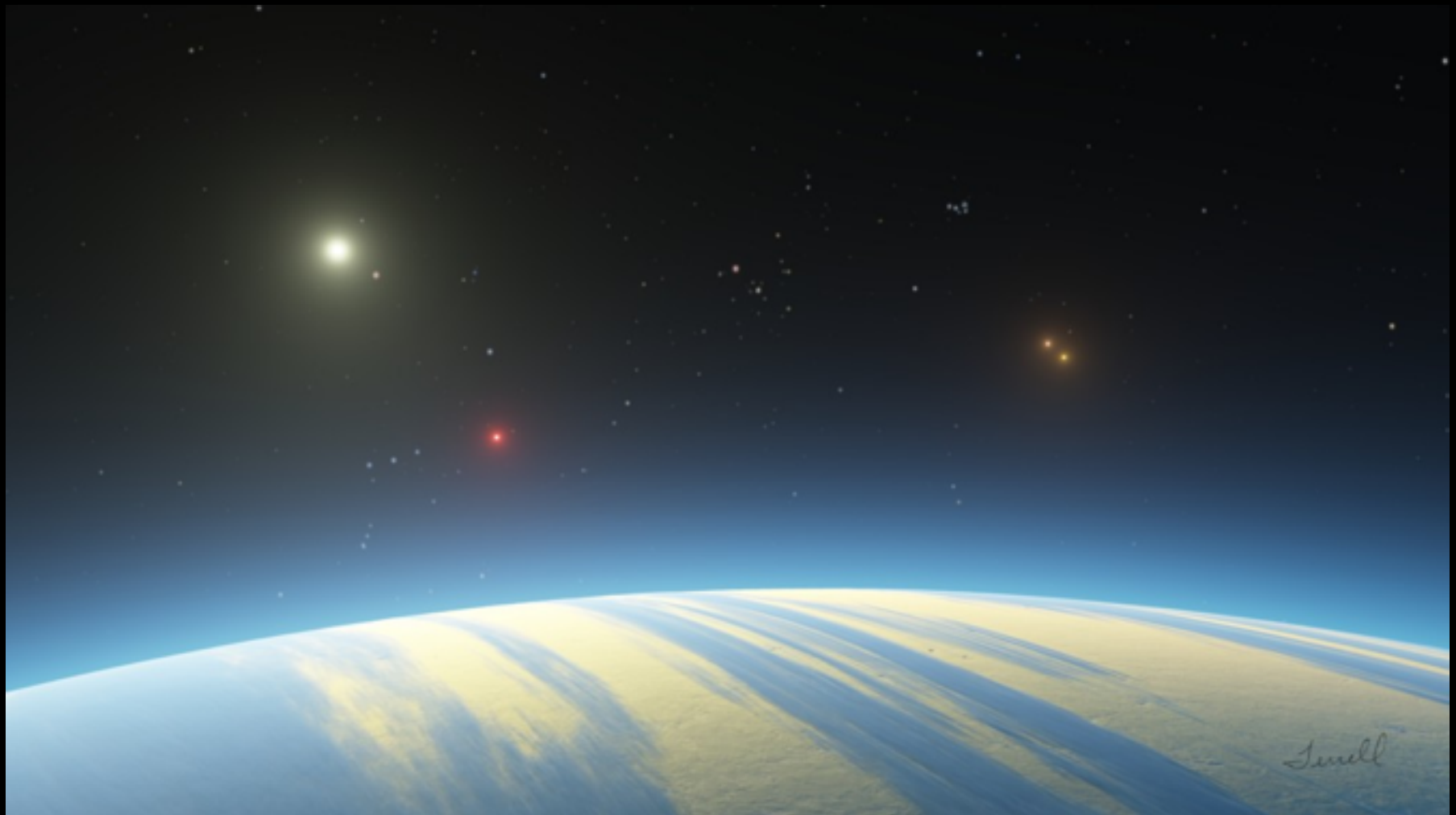
Normalized SAP_FLUX

Phase

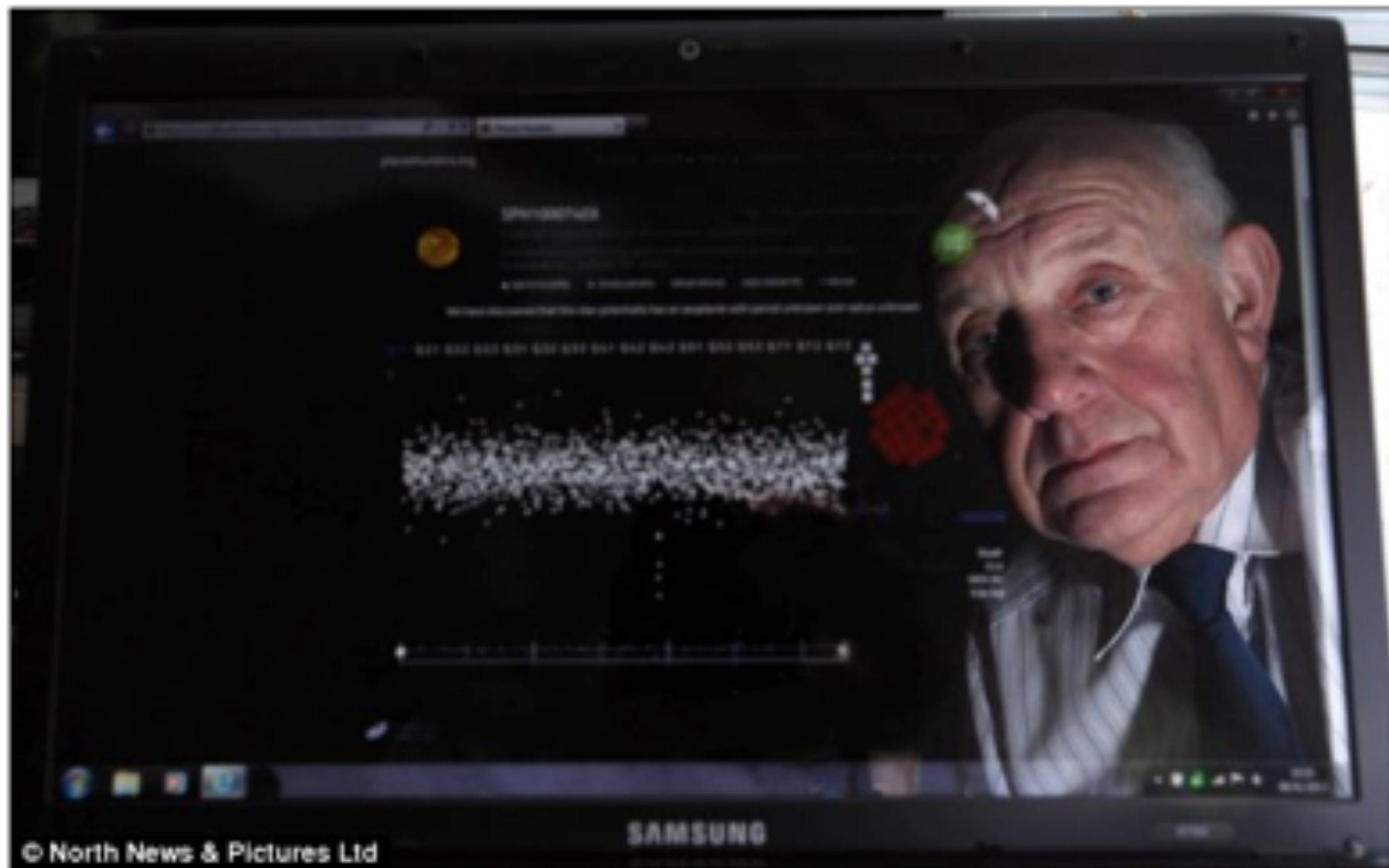
Started by [kianjin](#)
Edit
Remove
Make this a featured discussion

[kianjin](#)
Congratulations for a v
Transits are very well-f
very consistent transit
MAST has data from Q1
yield a smoothed out

Based on an estimated depth of 0.0018, we have a 3.813 RE planet with an orbit of 0.377AU. The observed transit duration is 12.7hr, much longer than the calculated central transit. It is possible that planet is in an eccentric orbit and the transit is observed close to apastron.



Smell



SPACEWARPS



Classify



Science



Spotter's Guide

Feedback



Discuss



spacewarps.org/beta/

2

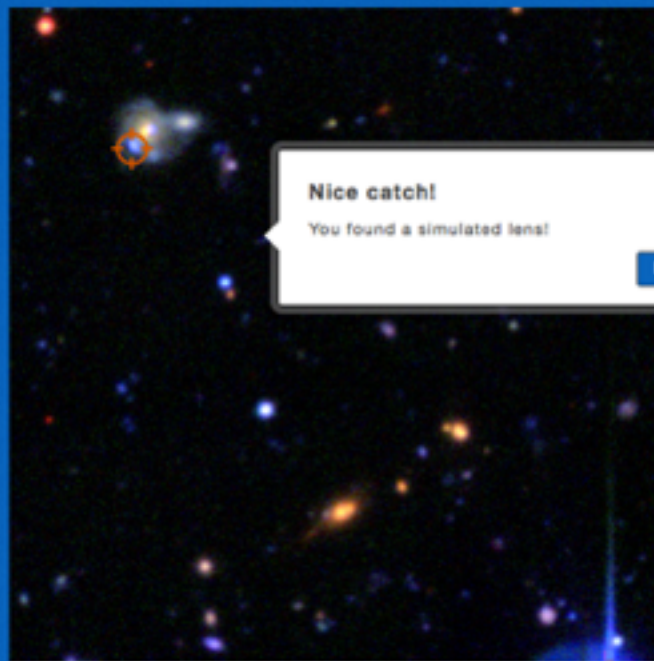
IMAGES VIEWED

2

POTENTIAL LENSES

0

FAVOURITE IMAGES



Nice catch!

You found a simulated lens!

Next Image

Spotter's Guide



A Zooniverse project

SIGN UP | SIGN IN

Spotter's Guide

LENSES

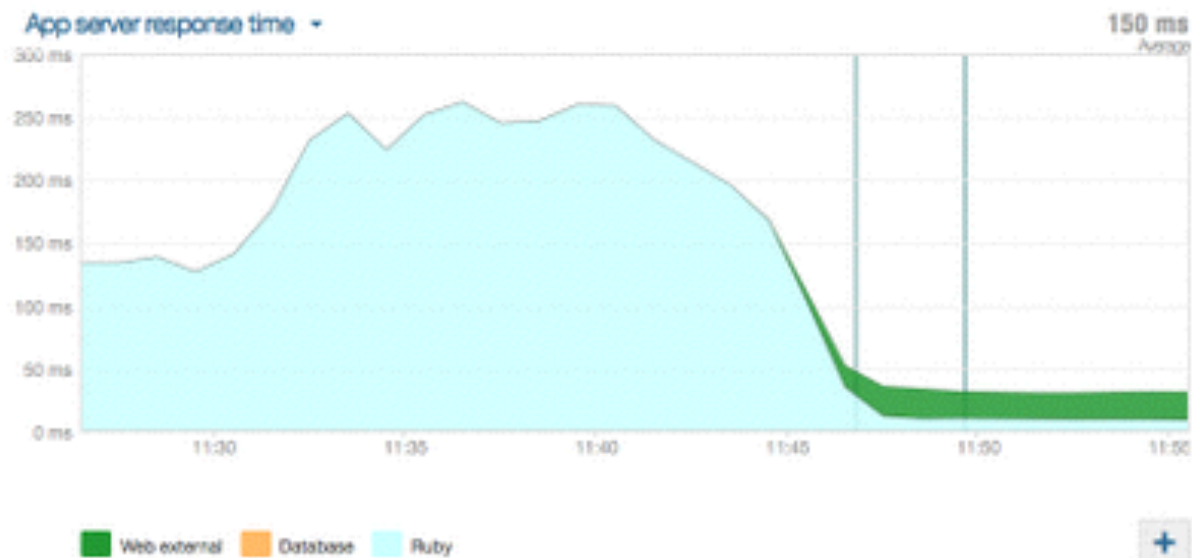


NON-LENSES

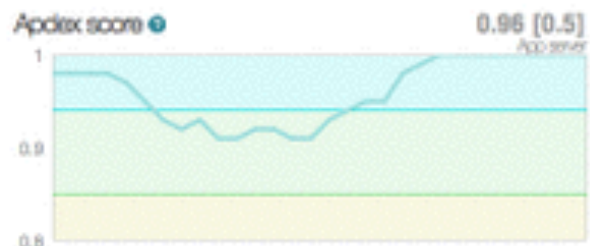


Finished marking!

App server response time ▾



Apdex score ●



Throughput (rpm)



Compare with yesterday

New data

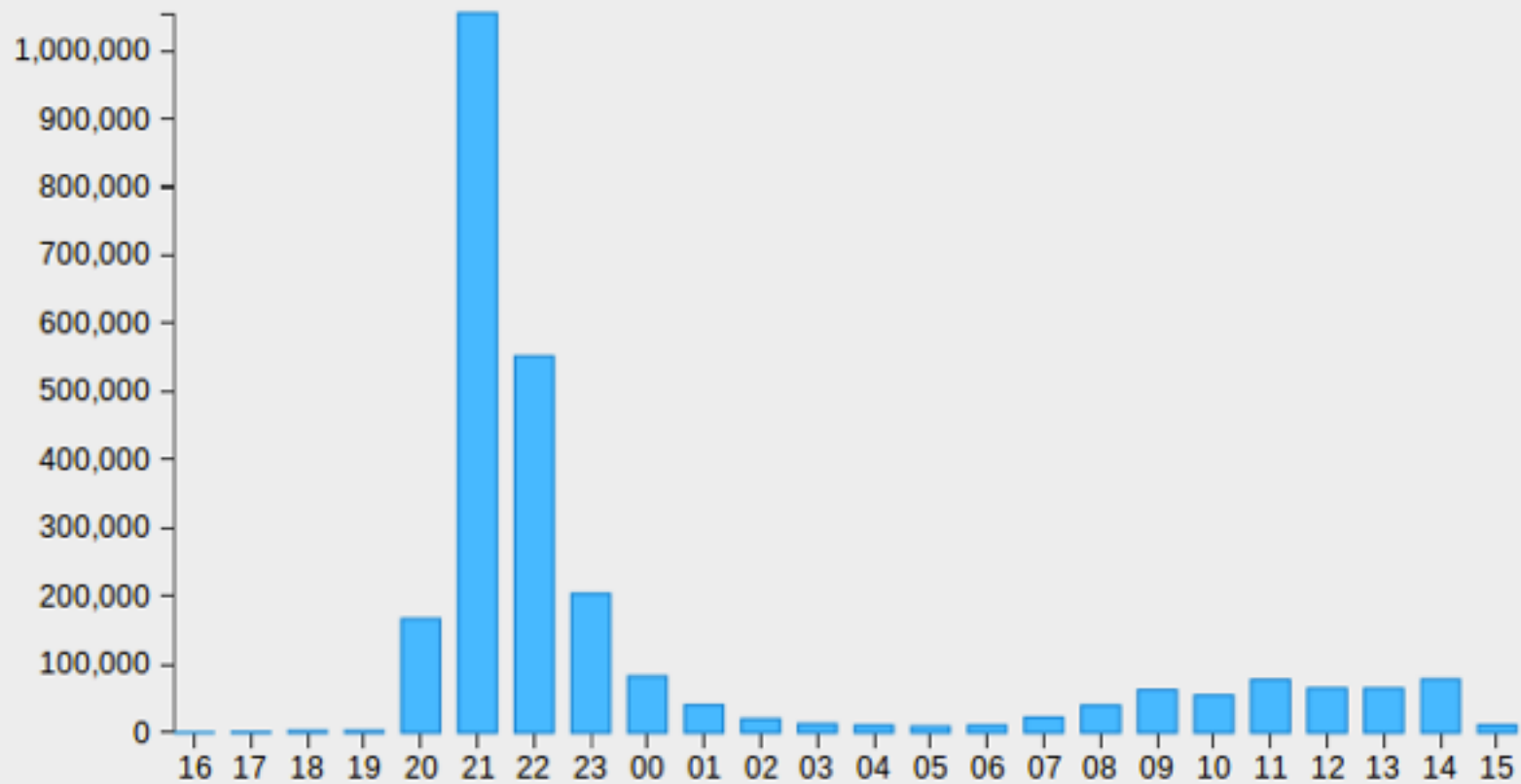
Space Warps

CLASSIFICATIONS

13,556,711

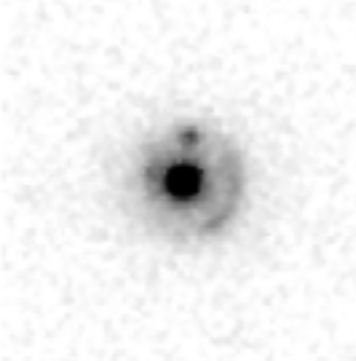
Total

Classifications per Hour



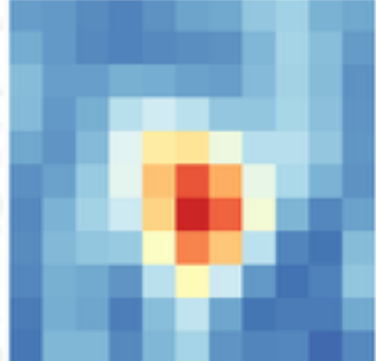


K_s-band (VICS82)



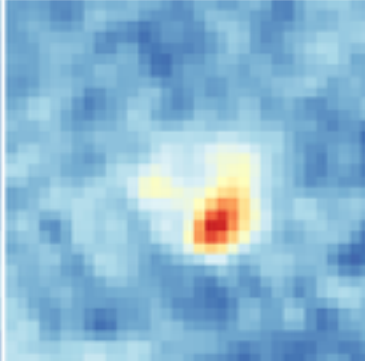
1 asec

1.4GHz FIRST



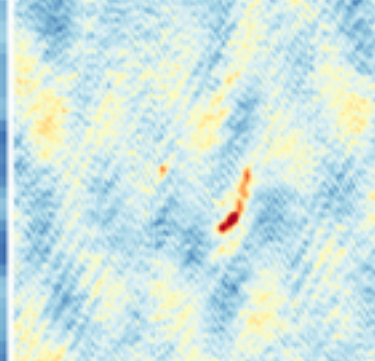
1 asec

1.4GHz Hodge et al. (2011)



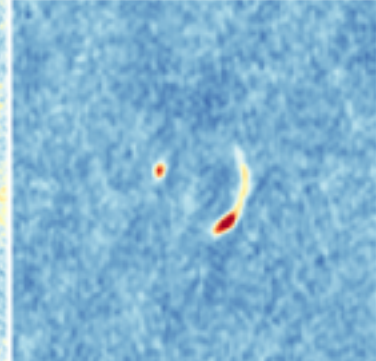
1 asec

1.4GHz eMERLIN

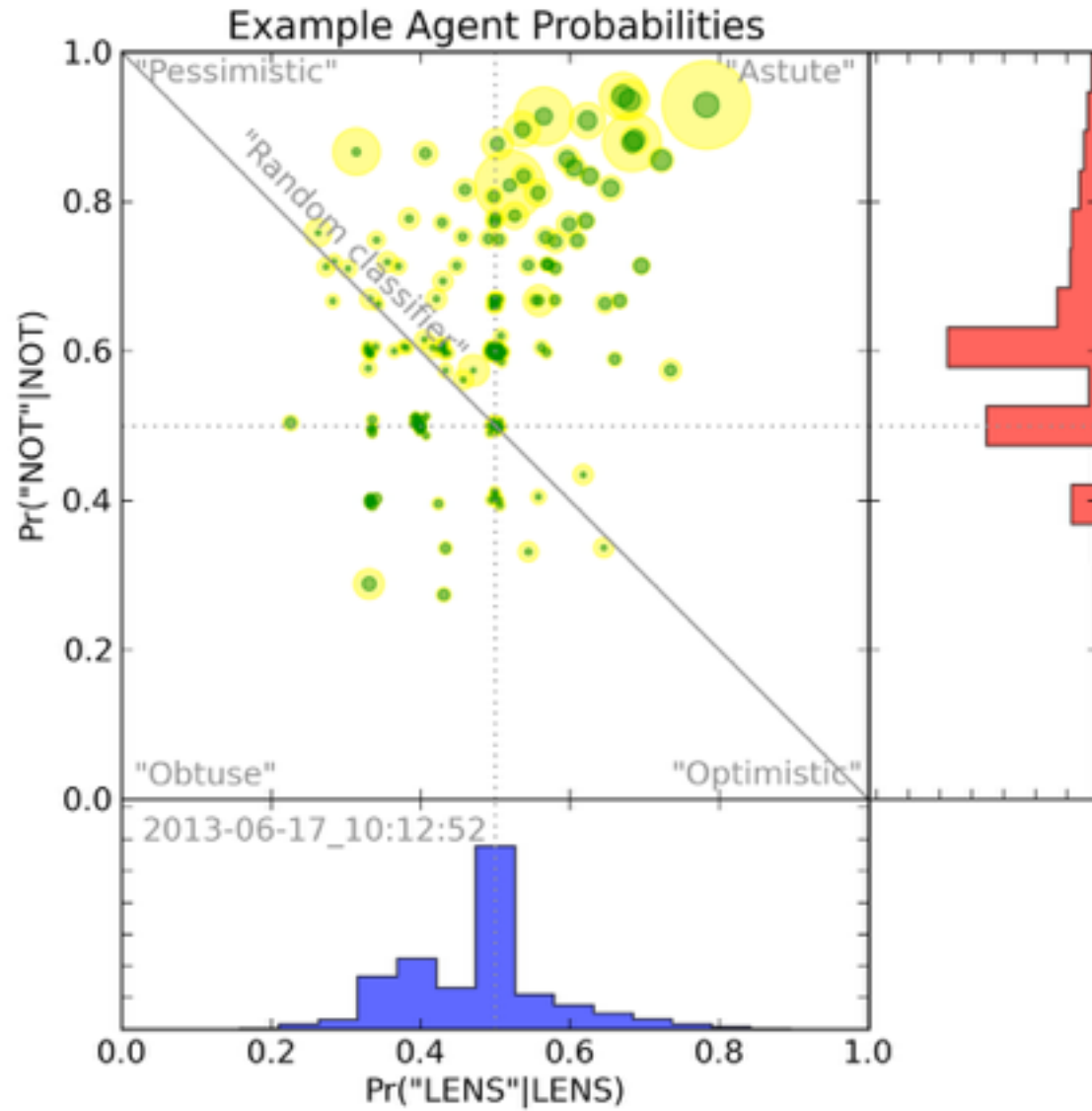


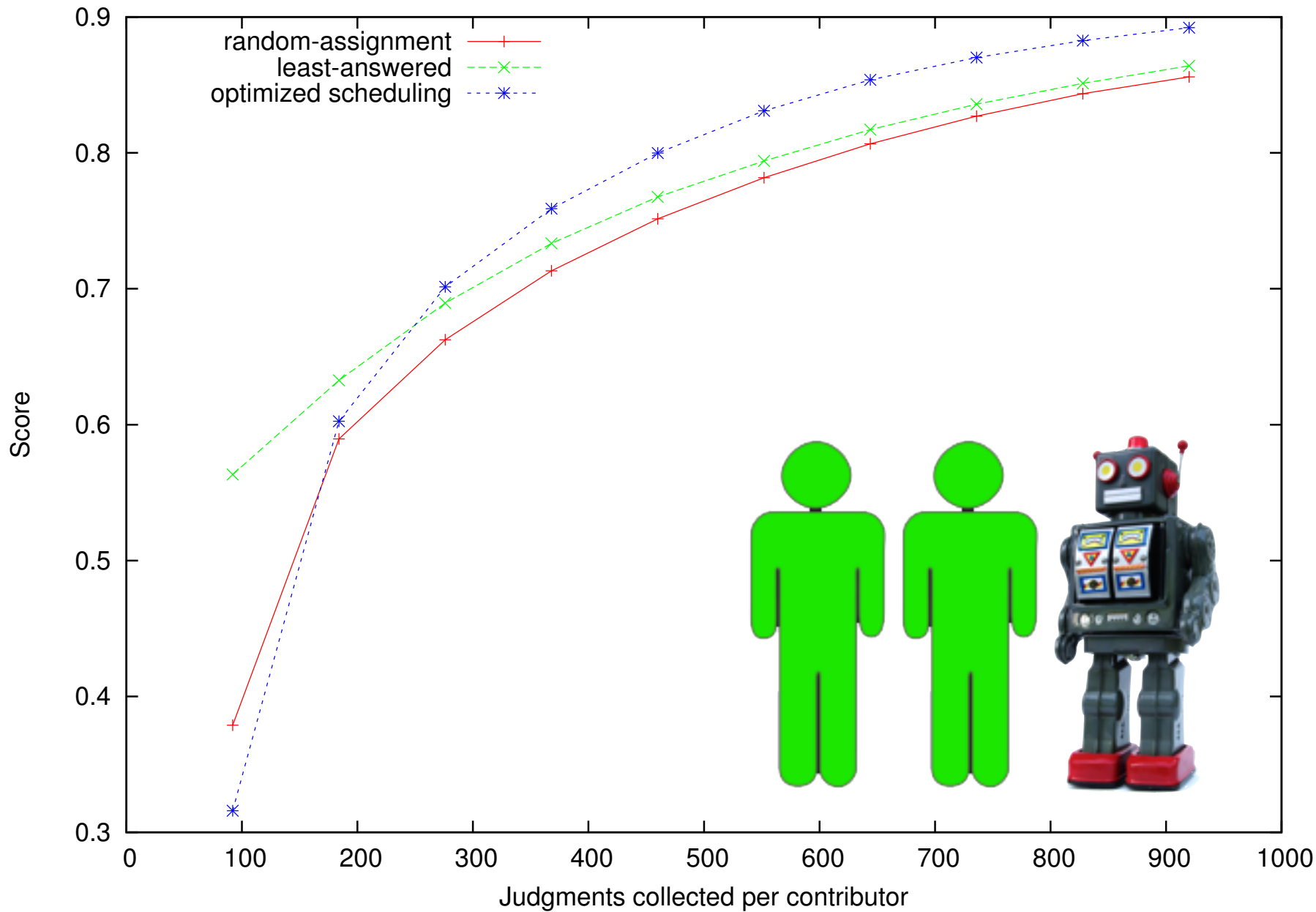
1 asec

5GHz JVLA



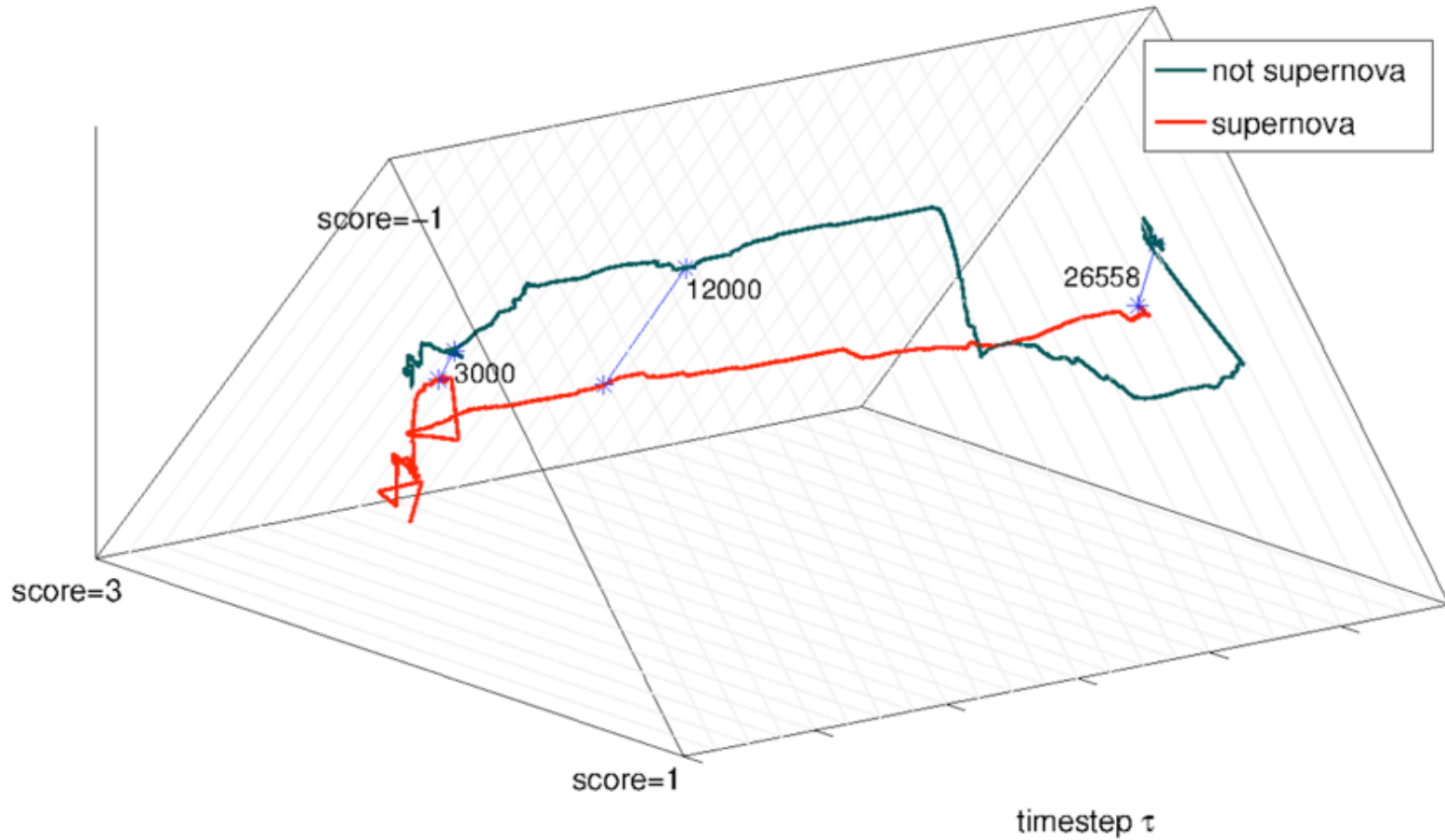
1 asec



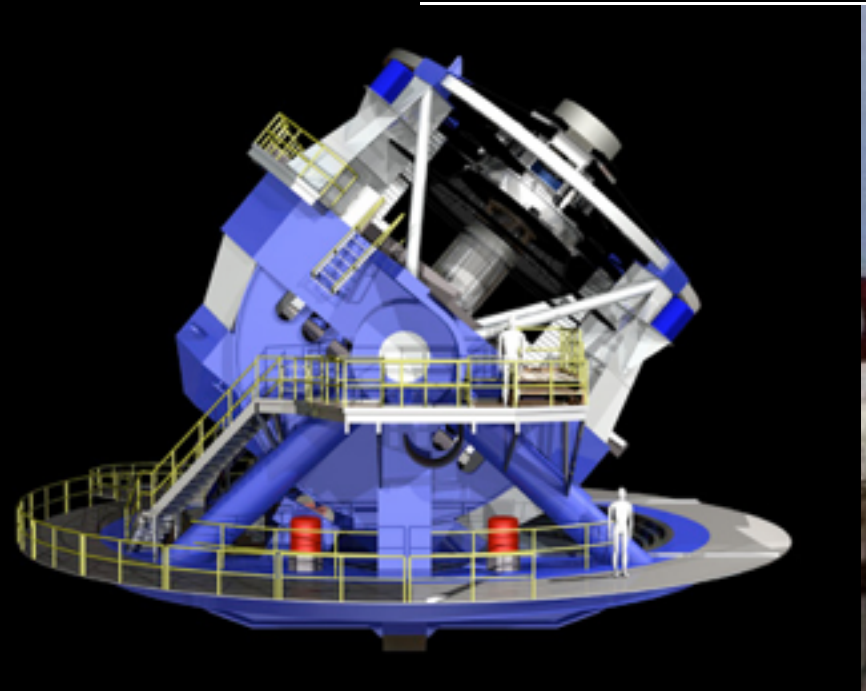


IBCC

Changes in Confusion Matrix of Base Classifier 139963









www.zooniverse.org

We have a position open for a Javascript developer to work on an art history project with Tate. Contact me if you're interested!

cjl@astro.ox.ac.uk / [@chrislintott](https://twitter.com/chrislintott)