

Libraries' IT: Who does what

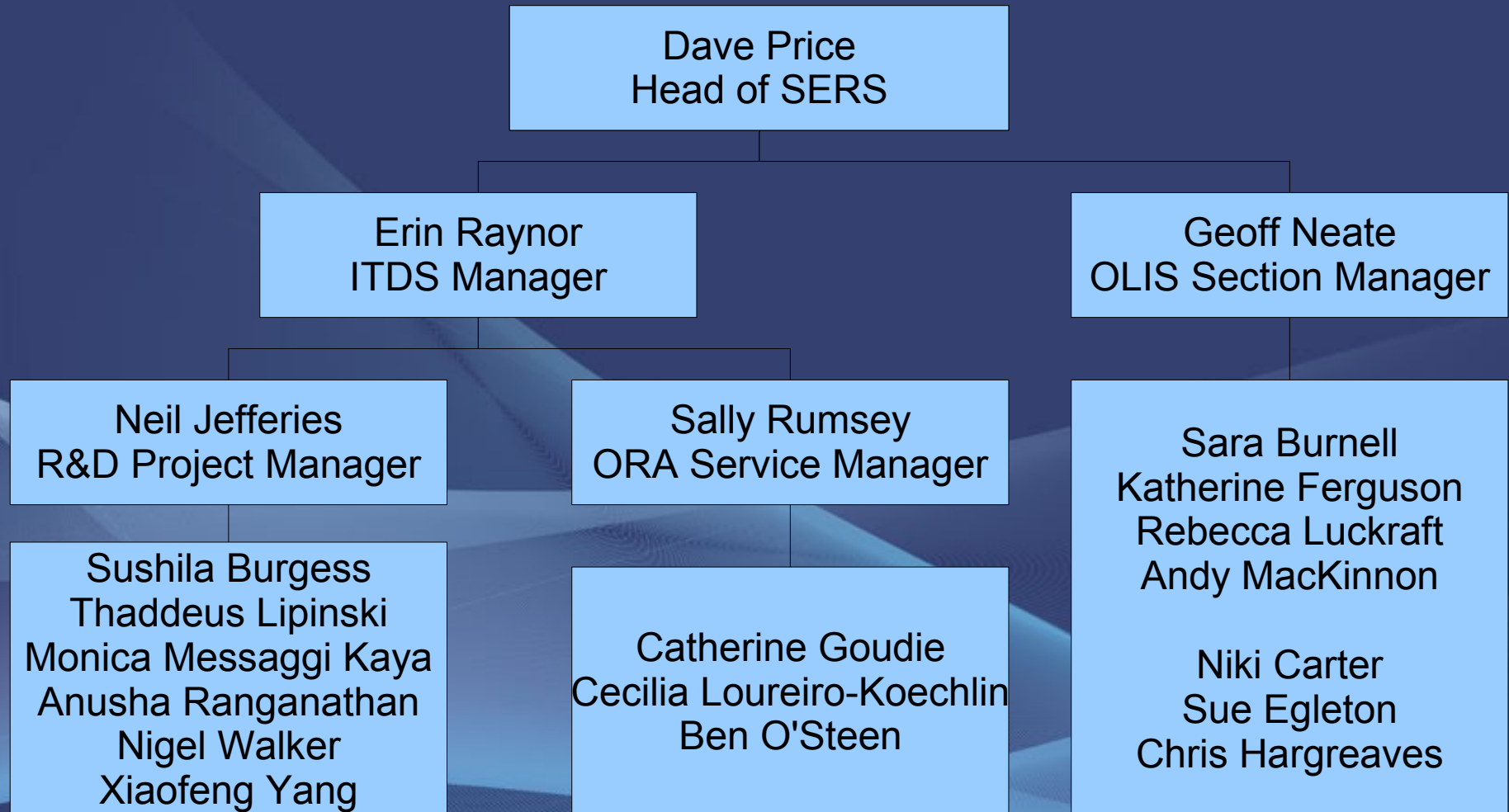
Neil Jefferies

R&D Project Manager

Systems & eResearch Services (SERS)

Oxford University Library Services (OULS)

Who are SERS? (Currently!)



What does ITDS do?

- “IT Development and Strategy”
- Provide IT expertise and support to other groups both inside and outside OULS
- Represent libraries in IT matters at a University level
- Handle systems and projects which fall outside other groups remit
- Coordinate IT activities to prevent duplication or incompatibility

What does the OLIS team do?

- System support for OLIS and SOLO
- Development of, and support for, OLIS-related systems/software/services
- OLIS-related training and support for librarians for all OLIS libraries (OULS & non-OULS)
- Liaison and data exchange with other University units, and national and international library organisations

Who else provides services and support for libraries?

- The ICT Support Team
 - Desktop Services (Email, Printing, Office) for OULS
- ODL (Oxford Digital Library)
 - Digitisation of collections
- OULS Collections & Resource Description
 - Electronic Resources, OxLIP+
- Local ITSS!

ITDS - Supporting Other Groups

- SOLO
 - Web Widgets and interface
 - Integration of OXLIP
 - Hosting of 70+ legacy OXLIP applications
- SunRays
 - College libraries deployment
- Allegro
 - Oriental and John Johnson

ITDS - Representing Libraries

- Core User Directory Project
 - Inclusion of Library Card requirements
- Groupware Project
 - University Exchange and Sharepoint
- Repositories Steering Group
 - Long term storage of data
- REF/Research Management Process

ITDS - Representing Libraries

- Strong Relationships with other institutions
 - BL, TNA, Cambridge, Southampton, Stanford
- National and international fora and initiatives
 - DART/DRIVER, HEFCE
- Industry groups
 - CRIG, PASIG

ITDS Services

- Oxford Research Archive (ORA)
- Web Databases
- Content Management System (CMS)
- Sentry Gate System
- Web Statistics
- Digital Asset Management System (DAMS)
- Externally Funded Projects

Oxford Research Archive

- Sally Rumsey – Service Manager
- Oxford's “Institutional Repository”
- Eprints, eTheses,- Conference and working papers
- Provides long term preservation and accessibility
- REF integration

Web Databases

- Databases Integrated with the CMS to support Library administration
 - Accessions Database
 - Training and Workshops Database
 - Electronic Ephemera Tracking
 - Poetical Works
 - Service Continuity Database
 - Parliamentary Bills...

Content Management System

- Provides a standard mechanism for libraries to publish material on the Web
 - Templates for consistent look-and-feel
 - Libraries have own identity besides OULS
- We will migrate to a faster server soon!

Sentry Gate System

- Provides entry control via card scanning
 - RSL, Law, Proscholium
 - Linked to Library and University Card Databases
 - Logging (anonymised)
 - Rules can be set
 - Fault tolerant

Web Statistics

- OULS have a LOT of Websites which all generate different statistics
 - We need to catalogue them!
- OULS has a lot of requirements for statistics
 - Page Hits
 - Resource access
 - Visit profiles
- These need to be matched up



Digital Asset Management System

- The DAMS is an infrastructural component
 - Storage, Object Management and Tools
 - Long term preservation
- The DAMS is not visible to end-users
- Applications which make use of the content are:
 - ORA, FMO, Blockbooks, Digitised collections
 - Google
- Part of OULS Digital Preservation Strategy



Externally Funded Projects

- Digitisation of collections
 - Blockbooks, Google, Electronic Ephemera
- Development and Enhancement of Electronic Resources
 - BRIL, MLGB3, Cultures of Knowledge, BID, eTHOS, NEEQ
- Digital Preservation
 - PRESERV2



And a few more I just thought of...

- Bodleian Online Shop
- Pharos/Printing/Photocopying
- Take on of OAD websites
 - Book of Curiosities
 - Digital Shikshapatri
- Internet Library of Early Journals (ILEJ)
- SKQS Database

OLIS

- “Oxford Libraries Information System”
- The University's union library catalogue and central Library Management System
- Roughly 100 libraries, 6.5 million titles, and 11.5 million copies
- Roughly 500 active library staff accounts
- Roughly 40,000 active library user accounts
- Currently based on Advance, by Geac/Infor

OLIS - For Library Users

- Searchable via web, Telnet, and Z39.50
- Online “patron functions”
 - Reservations, stack requests, renewals, etc.
- Automated email warnings for overdue loans
- Self Issue terminals
- Users are supported by library staff who are supported by SERS

OLIS - For Library Staff

- Main staff interface uses Telnet
- Specialised client software
 - GeoCat, for cataloguers, uses Z39.50
 - CircBack, InventoryControl, etc. use FTP
- Pool of borrowable barcode scanners
- Statistics, reports, data exports, etc.
- ... and lots more!

Looking ahead...

- Recent months have seen consideration of shortlists of suppliers/systems
- Announcement about a replacement LMS/ILS and implementation timescale expected over the next few months
- Also expect a decision about a Warehouse Management System for the Depository at Swindon

SOLO

- “Search Oxford Libraries Online”
- Resource Discovery Service
 - Sits “in front of” other resources
 - OLIS, ORA, OxLIP+, e-Journals...
 - Uses own indexes based on harvested data
 - Provides a single search interface
 - Click-through from results to native interfaces
- Currently runs Primo, by Ex Libris

SSO, Shibboleth, and EZProxy

- Oxford stopped using ATHENS in summer 2008
- UK Access Management Federation resources
 - OUCS-run Shibboleth IdP, with authentication via WebAuth
- IP-restricted resources
 - SERS-run EZProxy provides Oxford IP address to certain remote sites, when authenticated via WebAuth

Further information

- Many different sources of information!
- Aim to provide a set of links in the ITSS Wiki

Questions

Neil Jefferies

neil.jefferies@sers.ox.ac.uk

www.sers.ox.ac.uk

If you need something doing...

http://www.ouls.ox.ac.uk/sers/rfd_procedure