



Windows Server® 2008

Adam Hamilton

ITS FEDA Ltd

Administrators Only

- Server Manager
- Server Core
- Windows Powershell



Server Manager (myserver)

- + Roles
- + Features
- + Diagnostics
- + Configuration
- + Storage

Server Manager (myserver)



Get an overview of the status of this server, perform top management tasks, and add or remove server roles and features.

Server Summary

[Server Summary Help](#)

Computer Information

Full Computer Name: myserver

Workgroup: WORKGROUP

Local Area Connection: IPv4 address assigned by DHCP, IPv6 enabled

Remote Desktop: Disabled

Product ID: 92516-083-1000042-76528

- [Change System Properties](#)
- [View Network Connections](#)
- [Configure Remote Desktop](#)

 Do not show me this console at logon

Security Information

Windows Firewall: On

Windows Updates: Install updates automatically using

- [Go to Windows Firewall](#)
- [Configure Updates](#)
- [Check for New Roles](#)

Last Refresh: 7/14/2008 8:13:48 AM [Configure refresh](#)



Select Server Roles

Before You Begin

Server Roles

Confirmation

Progress

Results

Select one or more roles to install on this server.

Roles:

- Active Directory Certificate Services**
- Active Directory Domain Services
- Active Directory Federation Services
- Active Directory Lightweight Directory Services
- Active Directory Rights Management Services
- Application Server
- DHCP Server
- DNS Server
- Fax Server
- File Services
- Network Policy and Access Services
- Print Services
- Terminal Services
- UDDI Services
- Web Server (IIS)
- Windows Deployment Services

Description:

[Active Directory Certificate Services \(AD CS\)](#) is used to create certification authorities and related role services that allow you to issue and manage certificates used in a variety of applications.

[More about server roles](#)

< Previous

Next >

Install

Cancel



Select Features

Features

Confirmation

Progress

Results

Select one or more features to install on this server.

Features:

- BITS Server Extensions
- Connection Manager Administration Kit
- Desktop Experience
- Failover Clustering
- Group Policy Management**
- Internet Printing Client
- Internet Storage Name Server
- LPR Port Monitor
- + Message Queuing
 - Multipath I/O
 - Network Load Balancing
 - Peer Name Resolution Protocol
 - Quality Windows Audio Video Experience
 - Remote Assistance
 - Remote Differential Compression
- + Remote Server Administration Tools (Installed)
 - Removable Storage Manager
 - RPC over HTTP Proxy
 - Simple TCP/IP Services
 - SMTP Server
- + SNMP Services
 - Storage Manager for SANs

[More about features](#)

Description:

[Group Policy Management](#) is a scriptable Microsoft Management Console (MMC) snap-in, providing a single administrative tool for managing Group Policy across the enterprise. Group Policy Management is the standard tool for managing Group Policy.

< Previous

Next >

Install

Cancel



- Server Manager (MYSERVER)
 - Roles
 - Active Directory Domain Services
 - Active Directory Users and Computers
 - Active Directory Sites and Services
 - DNS Server
 - DNS
 - File Services**
 - Share and Storage Management
 - Print Services
 - Features
 - Diagnostics
 - Configuration
 - Task Scheduler
 - Windows Firewall with Advanced Security
 - Services
 - WMI Control
 - Storage
 - Windows Server Backup
 - Disk Management

File Services



Provides technologies that help you manage storage, enable file replication, manage shared folders, ensure fast file searching, and enable access for UNIX client computers

Display Name	Service Name
Server	LanmanServer

Description:
 Supports file, print, and named-pipe sharing over the network for this computer. If this service is stopped, these functions will be unavailable. If this service is disabled, any services that explicitly depend on it will fail to start.

Role Services: 1 installed

Role Service	Status
File Server	Installed
Distributed File System	Not installed
DFS Namespaces	Not installed
DFS Replication	Not installed
File Server Resource Manager	Not installed
Services for Network File System	Not installed
Windows Search Service	Not installed
Windows Server 2003 File Services	Not installed
File Replication Service	Not installed
Indexing Service	Not installed

Return of the Command Line

- Server Core
- Windows PowerShell

Windows PowerShell
Copyright (C) 2006 Microsoft Corporation. All rights reserved.

PS C:\Users\Administrator.MYSERVER> get-service | where { <\$_ .status -eq "Running" > -and <\$_ .name -ilike "s*" > }

Status	Name	DisplayName
Running	SamSs	Security Accounts Manager
Running	Schedule	Task Scheduler
Running	seclogon	Secondary Logon
Running	SENS	System Event Notification Service
Running	ShellHWDetection	Shell Hardware Detection
Running	slsvc	Software Licensing
Running	SLUINotify	SL UI Notification Service
Running	Spooler	Print Spooler

PS C:\Users\Administrator.MYSERVER> get-service | where { <\$_ .status -eq "Running" > -and <\$_ .name -ilike "s*" > } | ft servicetype, name

ServiceType	Name
Win32ShareProcess	SamSs
Win32ShareProcess	Schedule
Win32ShareProcess	seclogon
Win32ShareProcess	SENS
Win32ShareProcess	ShellHWDetection
Win32OwnProcess	slsvc
Win32ShareProcess	SLUINotify
Win32OwnProcess, InteractiveProcess	Spooler

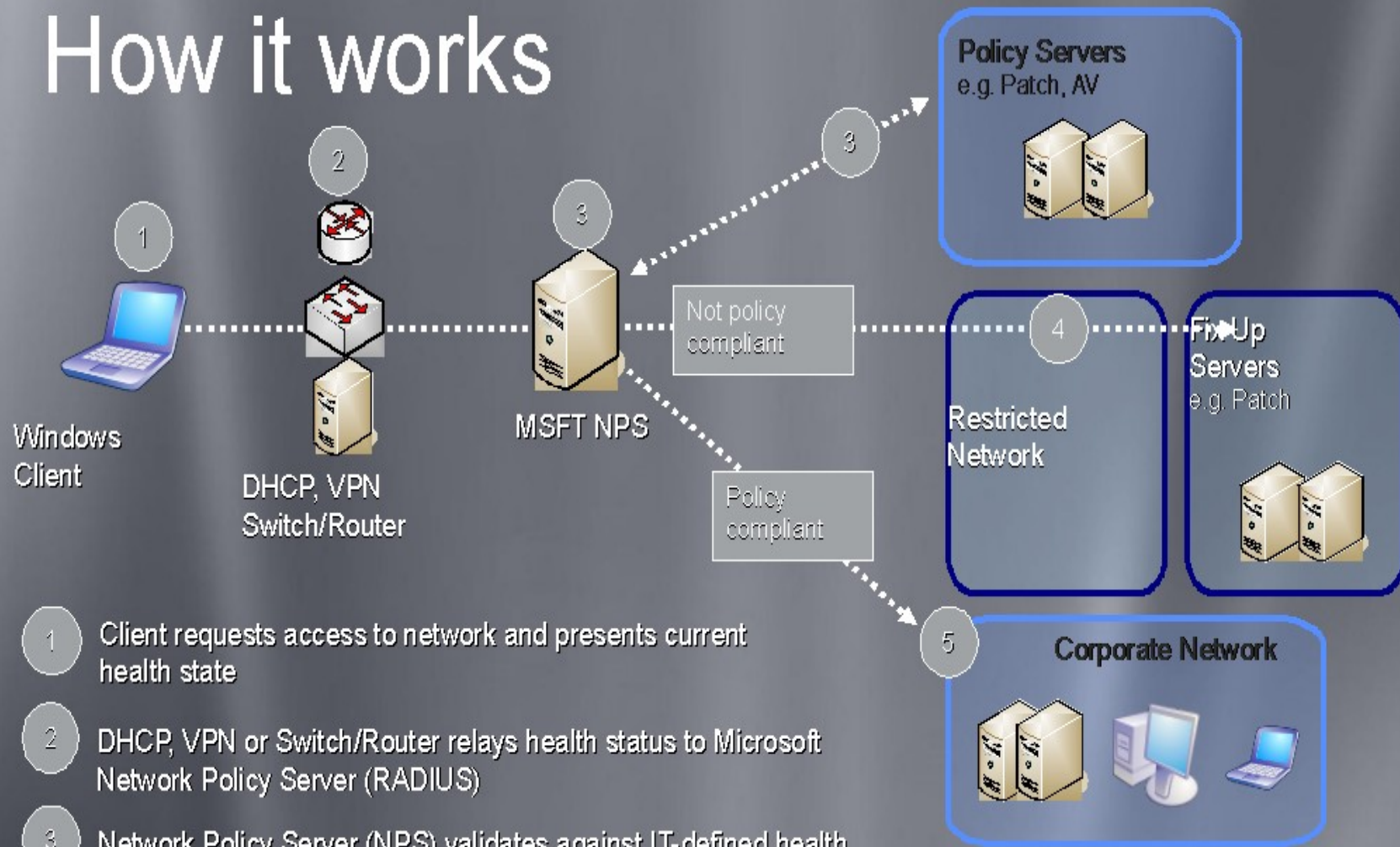
PS C:\Users\Administrator.MYSERVER>

Deep Down Inside

- Active Directory Features
- Network Access Policy
- A New IP Stack
- Hyper-V

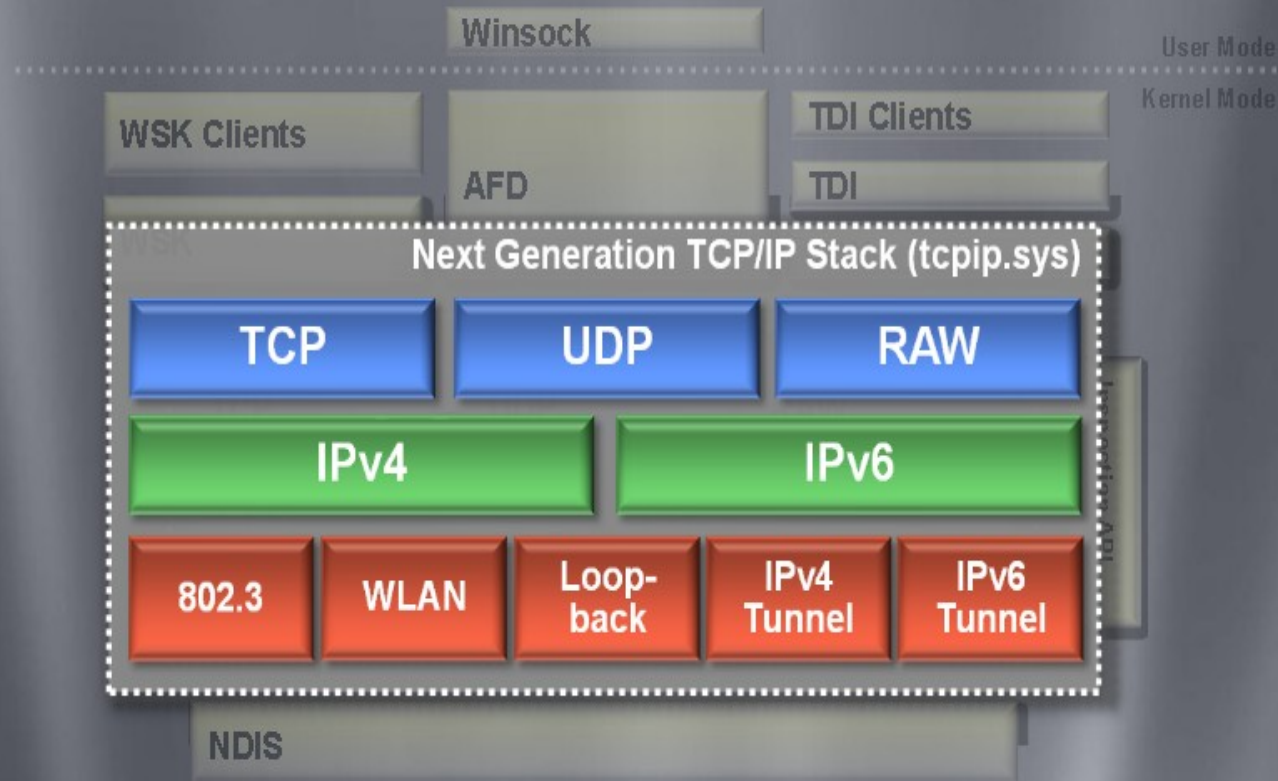
Network Access Protection

How it works



- 1 Client requests access to network and presents current health state
- 2 DHCP, VPN or Switch/Router relays health status to Microsoft Network Policy Server (RADIUS)
- 3 Network Policy Server (NPS) validates against IT-defined health policy
- 4 If not policy compliant, client is put in a restricted VLAN and given access to fix up resources to download patches, configurations, signatures (Repeat 1 - 4)
- 5 If policy compliant, client is granted full access to corporate network

Complete Redesign of TCP/IP

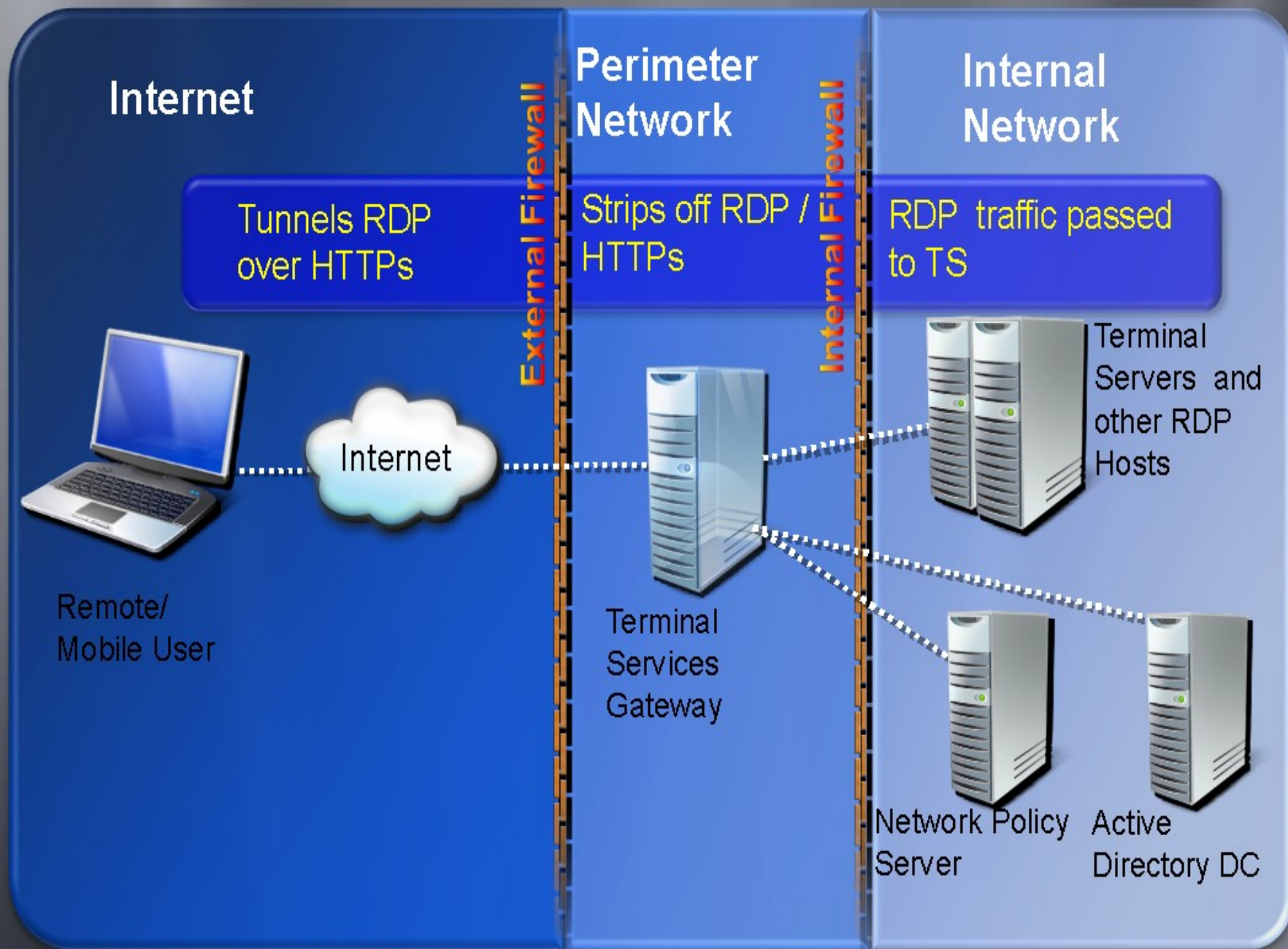


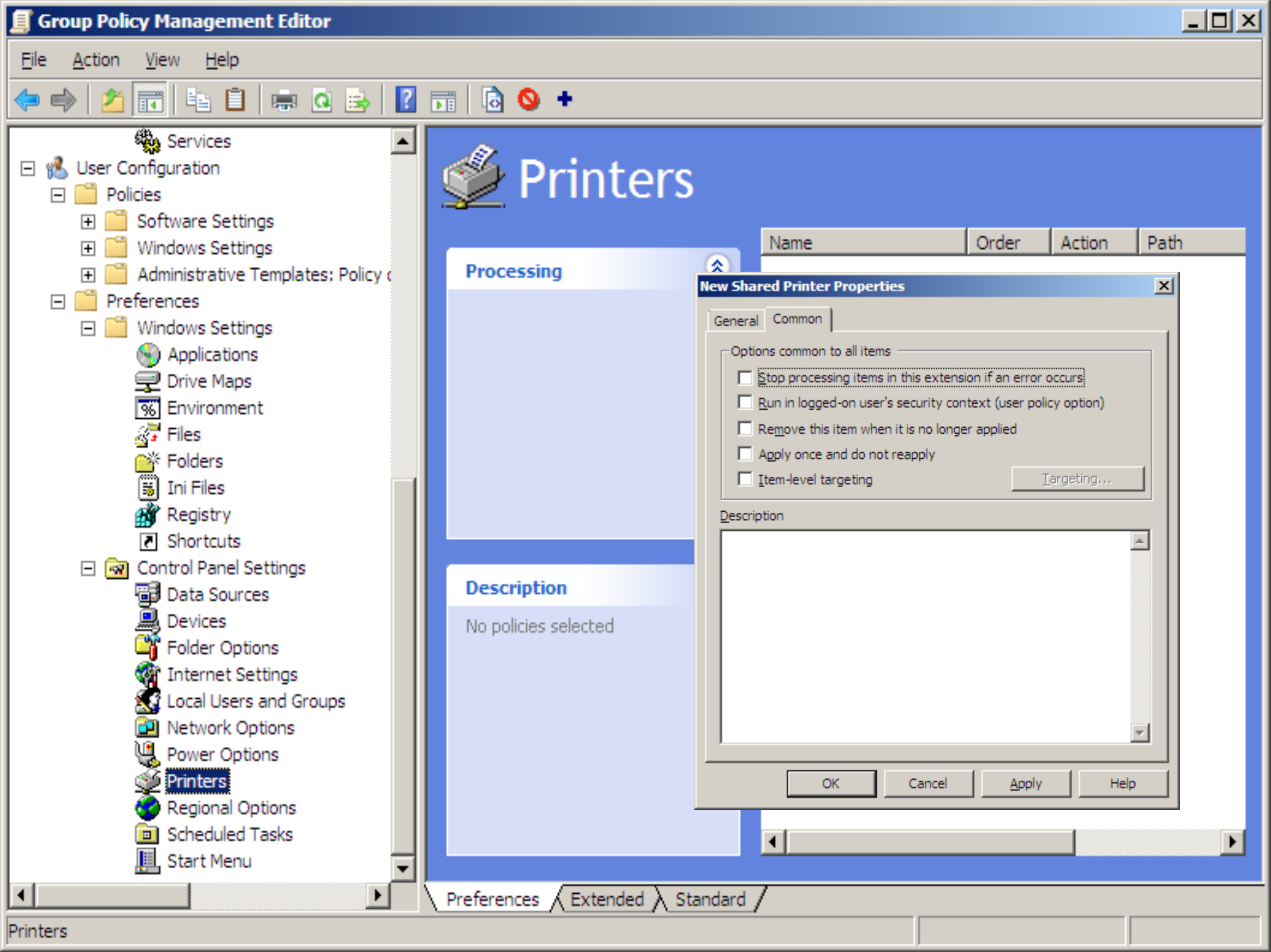
- Dual-IP layer architecture for native IPv4 and IPv6 support
- Improved performance via hardware acceleration and autotuning
- Completely manageable through Group Policy

Terminal Services

- Remote Applications
- Web Access
- Gateway

Terminal Services Gateway





- Services
- User Configuration
 - Policies
 - Software Settings
 - Windows Settings
 - Administrative Templates: Policy c
 - Preferences
 - Windows Settings
 - Applications
 - Drive Maps
 - Environment
 - Files
 - Folders
 - Ini Files
 - Registry
 - Shortcuts
 - Control Panel Settings
 - Data Sources
 - Devices
 - Folder Options
 - Internet Settings
 - Local Users and Groups
 - Network Options
 - Power Options
 - Printers**
 - Regional Options
 - Scheduled Tasks
 - Start Menu

Printers

Processing

Description

No policies selected

Name	Order	Action	Path
------	-------	--------	------

New Shared Printer Properties

General Common

Options common to all items

- Stop processing items in this extension if an error occurs
- Run in logged-on user's security context (user policy option)
- Remove this item when it is no longer applied
- Apply once and do not reapply
- Item-level targeting

Targeting...

Description

[Empty text area]

OK Cancel Apply Help

Convert your Windows Server 2008 to a Workstation!

Windows Server 2008 to Workstation Manual

 Search

Home

This manual will help you to install Microsoft Windows Server 2008 and to configure your pc so you can use it as a workstation. Thanks to DAz999, you can also download the full manual as a 6MB pdf file from [here](#)! If you need any help, don't hesitate to post your question on the [forums](#). You can watch screenshots of my final Windows Server 2008 workstation [here](#).

If you are still not convinced why to use Windows Server 2008 as your workstation OS, read [this](#) article, and you will be installing Windows Server 2008 right after reading it! 😊

News

15-06-2008: Added article [Preview Thumbnails in Windows Explorer](#)

14-06-2008: Updated article [Game Controllers](#). Now you can use the Vista Game Controllers Controlpanel item in stead of the one from XP.

01-05-2008: Added article [Game Controllers](#)

29-04-2008: Added article [Aero Cursors in Server 2008](#)

09-04-2008: Added article [Installing New Languages](#) to get Server 2008 in your **native language!**

Table of Contents

1. [Installation, Drivers, OS Language](#) and [Owner Information](#): Installation of Microsoft Windows Server 2008 and how to set owner name and -organization.
2. [New User, Auto Logon](#) and [Strong Passwords Enforcement](#): How to create a new user, how to configure a user to logon automatically and how to disable enforcement of a minimum complexity for passwords.
3. [Shutdown Tracker](#): How to disable the annoying Shutdown Event Tracker.