



# Wireless Services Update

Oliver Gorwits  
Network Development Officer  
Computing Services

# Overview



**Available here**

<http://www.oucs.ox.ac.uk/network/wireless/>

- Introduction
- Infrastructure review
- OWL today
- Looking to the future
- OWL's New Model



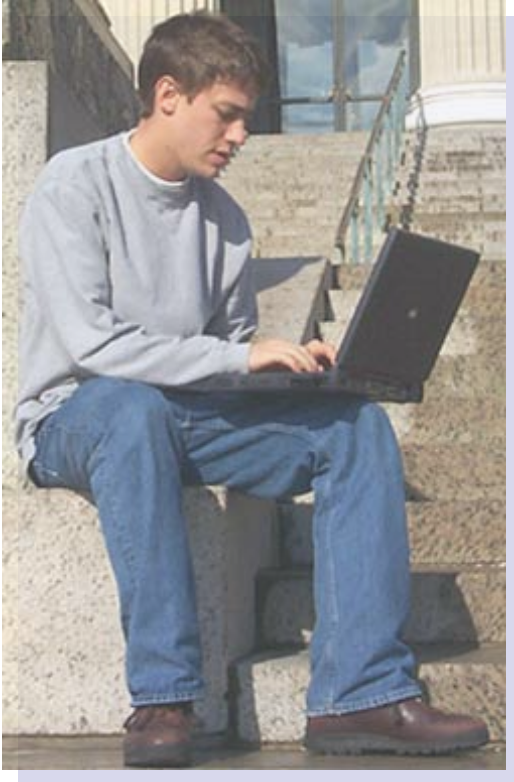
# Introduction

# The story so far...



- 2001-2003
  - Not widely understood
  - so mostly, Insecure
- OUCS Review
  - Pilot study
- 2006, our 3<sup>rd</sup> ITSSC !

# Ubiquitous service



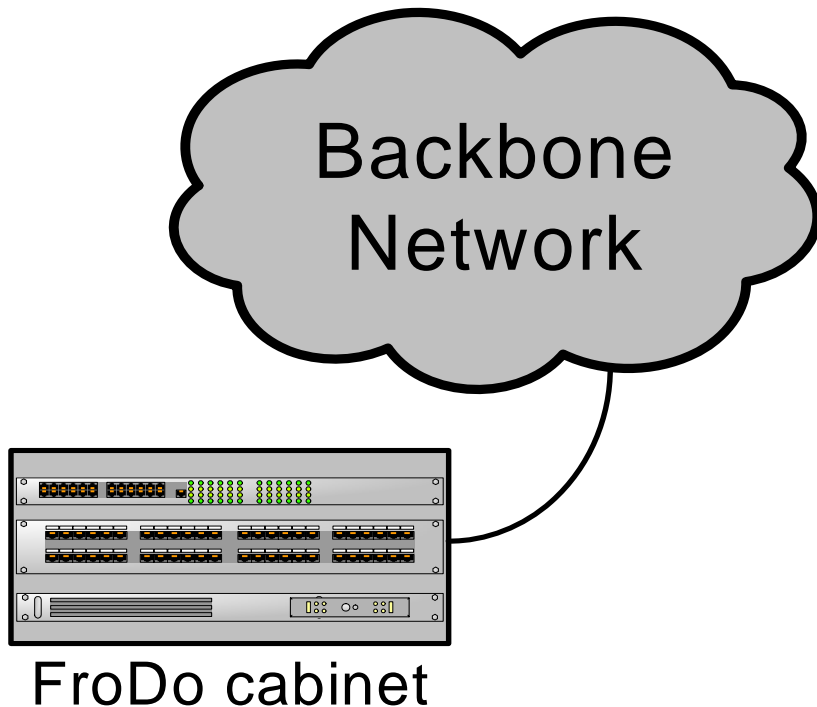
*...what does that mean?*

- Lots of Access Points
- User experience
- Account management
- Members, Guests...
- Telephony, etc.



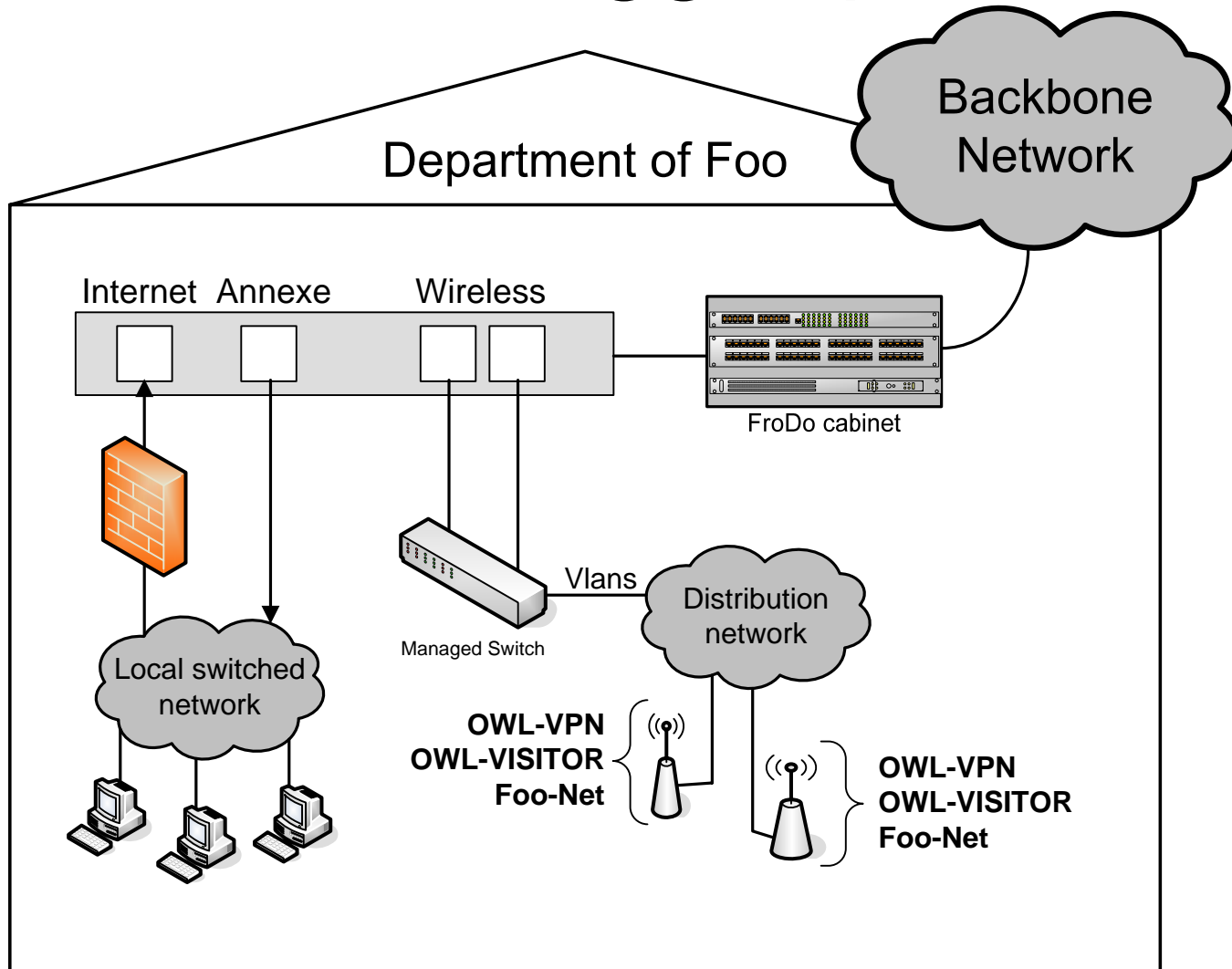
# Infrastructure review

# Knowing your FroDo



- Presentation is Copper Ethernet tails
  - ☐ No media converter
  - ☐ Standard IP service
  - ☐ Improved monitoring
- 24 ports for...
  - ☐ Main connection
  - ☐ Annexe or site-to-site
  - ☐ Wireless services

# FroDo - a bigger picture

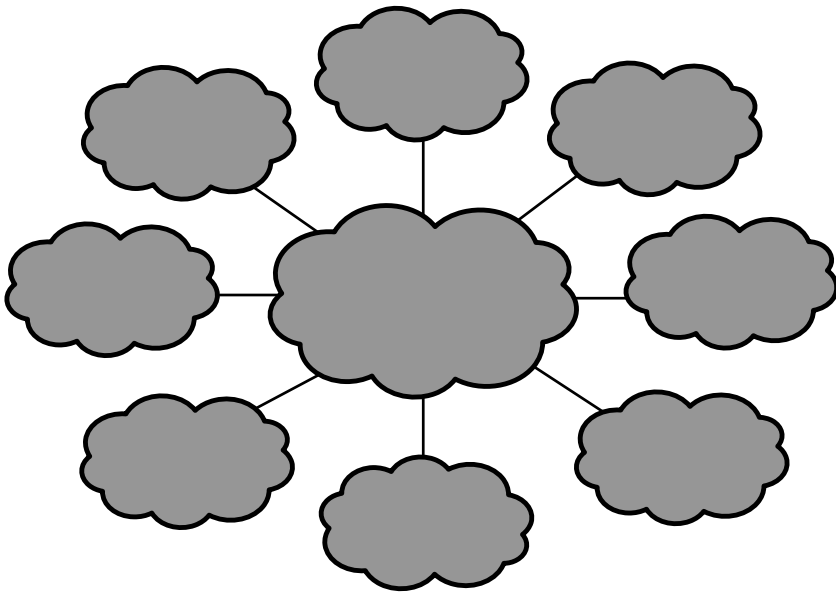






# Oxford Wireless LAN

# Network Visibility



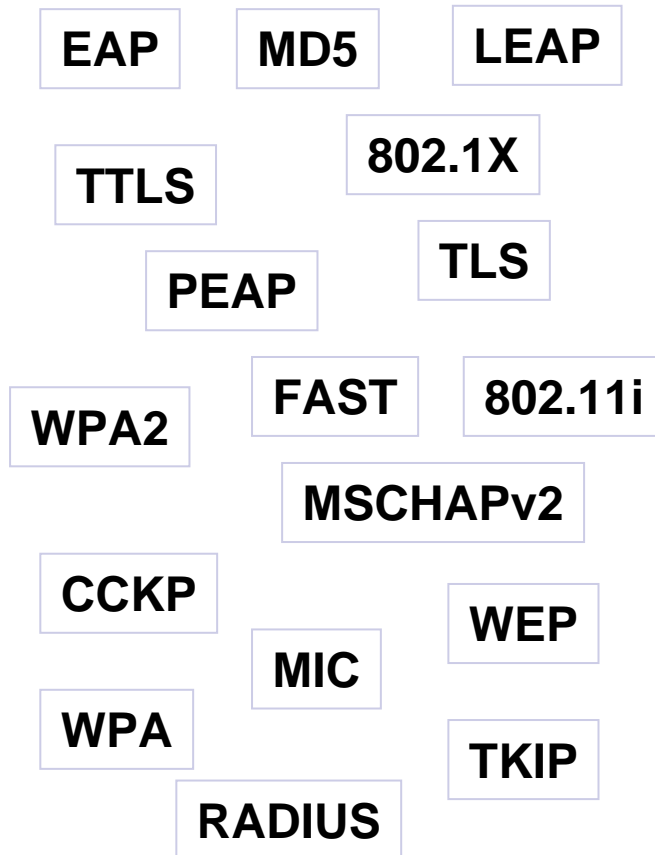
- Units are opaque to the backbone, and each other
- But advanced technologies demand infrastructure

# IT Support Staff



- Skills
  - ☐ Desire to learn ?
  - ☐ Time constraints
  
- Infrastructure
  - ☐ Funding problems

# Standards



“The nice thing about standards is that there are so many of them to choose from.”

*Andy Tanenbaum*

- One nut to crack, many hammers
- Some are better than others

# Vendors



- Oriented to corporate
  - Single IT domain
  - Managed systems
- We're too diverse
  - Laptops, PDA, etc
- We're too big
  - Not enough collective funding

# Client Platform



- Operating systems
  - Many vendors
  - Many versions !
  - Few supported standards in common
- Not much is secure
- Not much is free

# Access Method

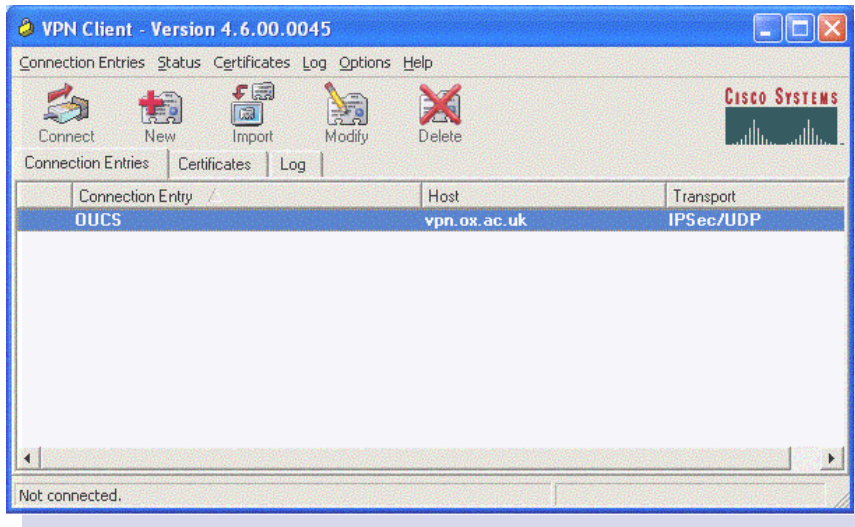


**Available here**

<http://www.oucs.ox.ac.uk/network/wireless/>

- Leverage a VPN
  - OS or 3<sup>rd</sup> party
- Captive Portal
  - Web based log-in
- WPA
  - OS or 3<sup>rd</sup> party

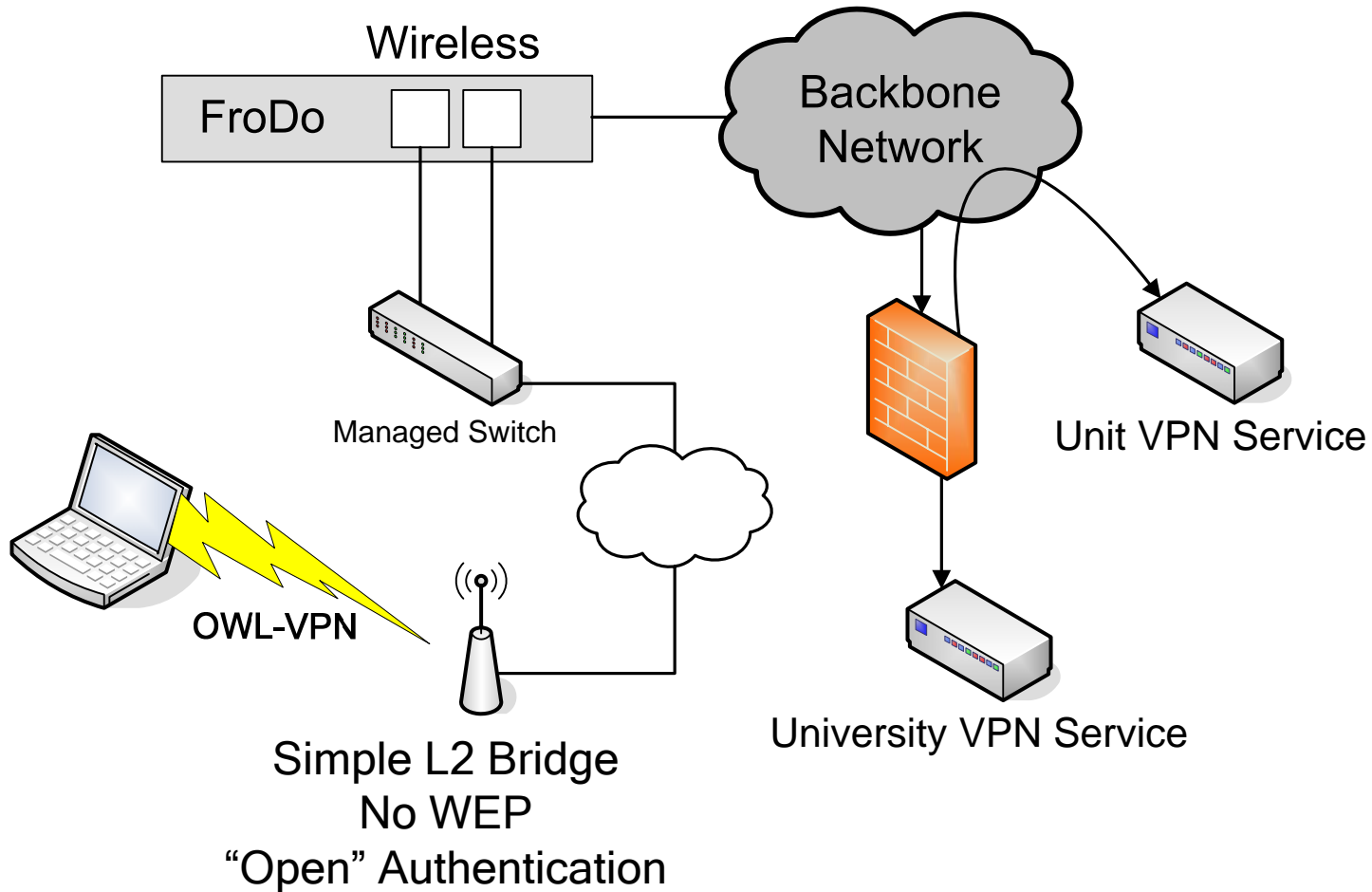
# VPN



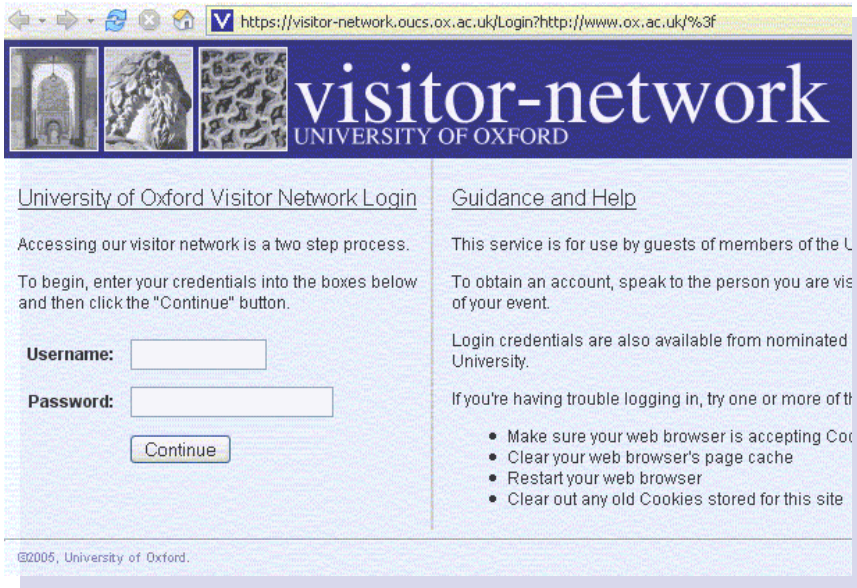
- Familiar service
- Widely used solution
- Little support cost
- Simple configuration
- Software bugs
- Few platforms



# VPN schematic



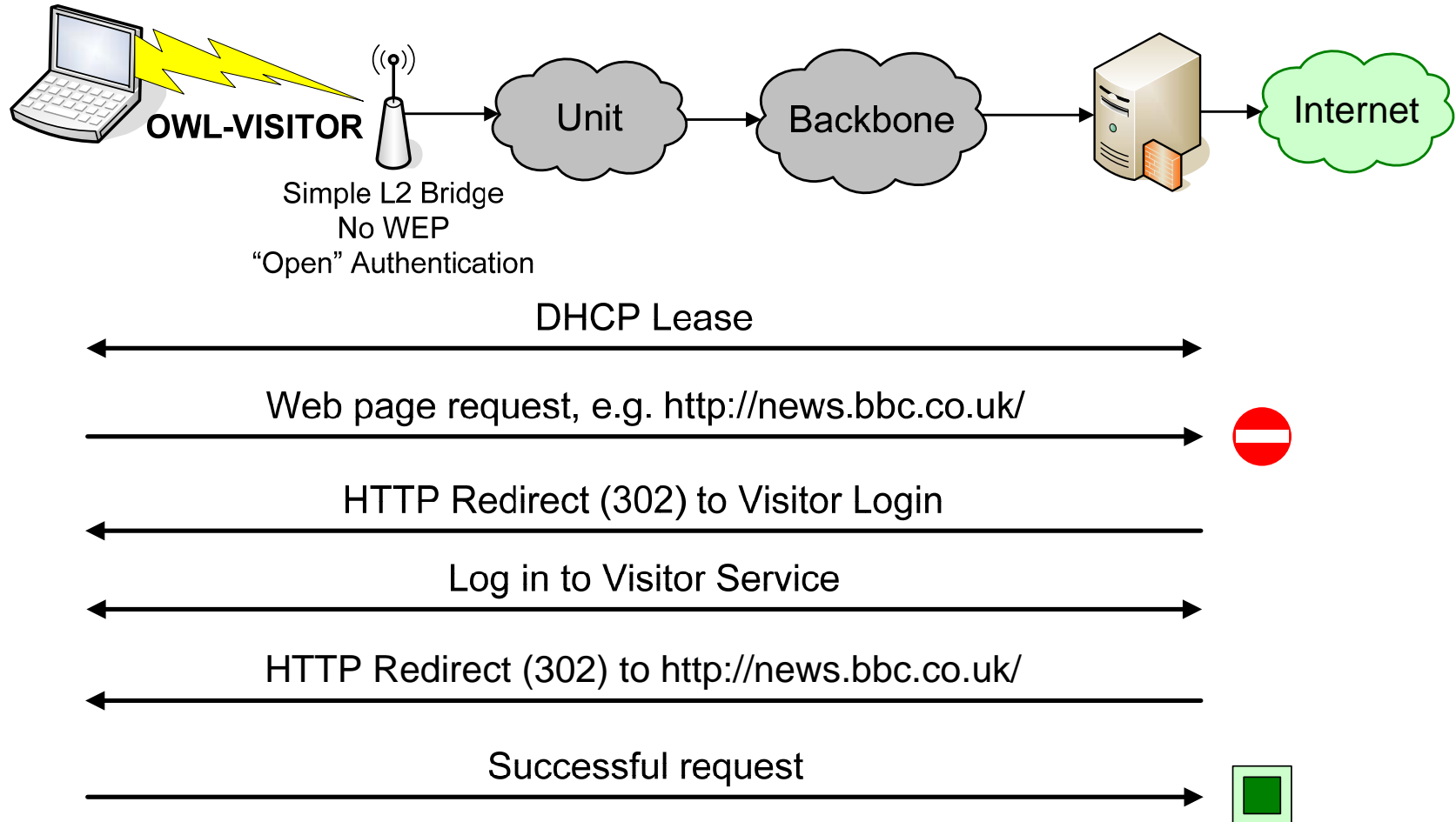
# Captive Portal



The screenshot shows a web browser window with the address bar displaying `https://visitor-network.oucs.ox.ac.uk/Login?http://www.ox.ac.uk/%3f`. The page header features the 'visitor-network UNIVERSITY OF OXFORD' logo. The main content area is divided into two columns. The left column, titled 'University of Oxford Visitor Network Login', contains instructions: 'Accessing our visitor network is a two step process. To begin, enter your credentials into the boxes below and then click the "Continue" button.' Below this are input fields for 'Username:' and 'Password:', followed by a 'Continue' button. The right column, titled 'Guidance and Help', contains text: 'This service is for use by guests of members of the U', 'To obtain an account, speak to the person you are vis of your event.', 'Login credentials are also available from nominated University.', and 'If you're having trouble logging in, try one or more of ti'. A bulleted list of troubleshooting steps follows: 'Make sure your web browser is accepting Cookies', 'Clear your web browser's page cache', 'Restart your web browser', and 'Clear out any old Cookies stored for this site'. The footer of the page reads '@2005, University of Oxford.'

- Web interception
- Time-limited accounts
- 'Outside' our network
- Many platforms
- Works on wires too!
- Low security

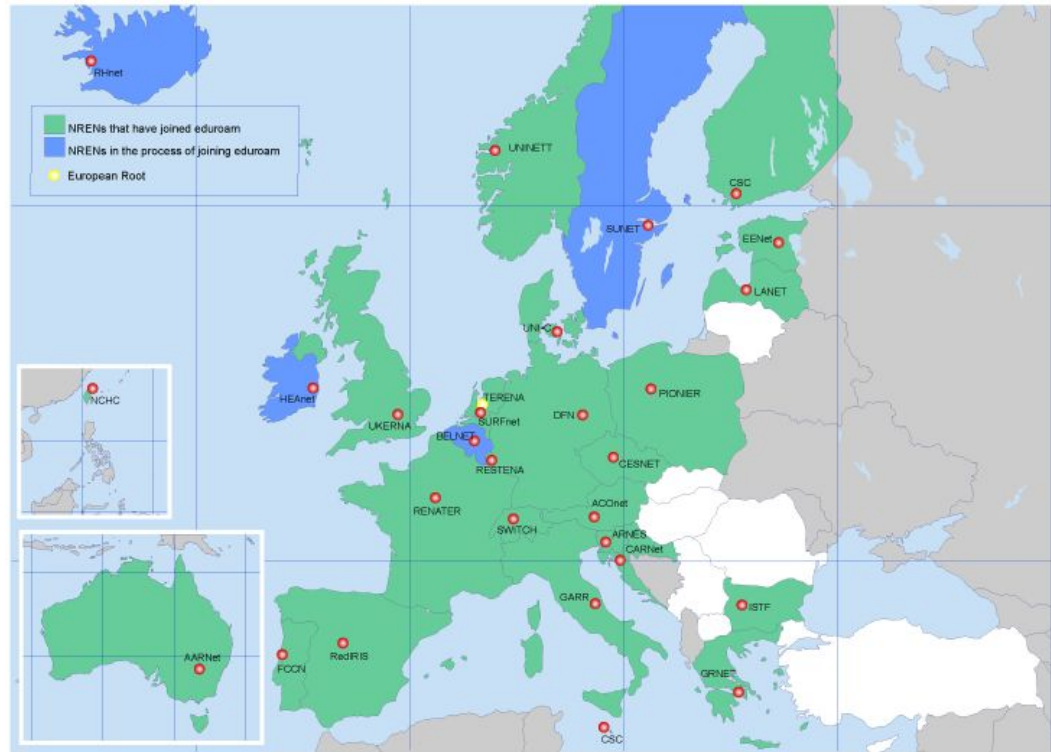
# Visitor Network flowchart





Looking to the future

# JANET Roaming Service

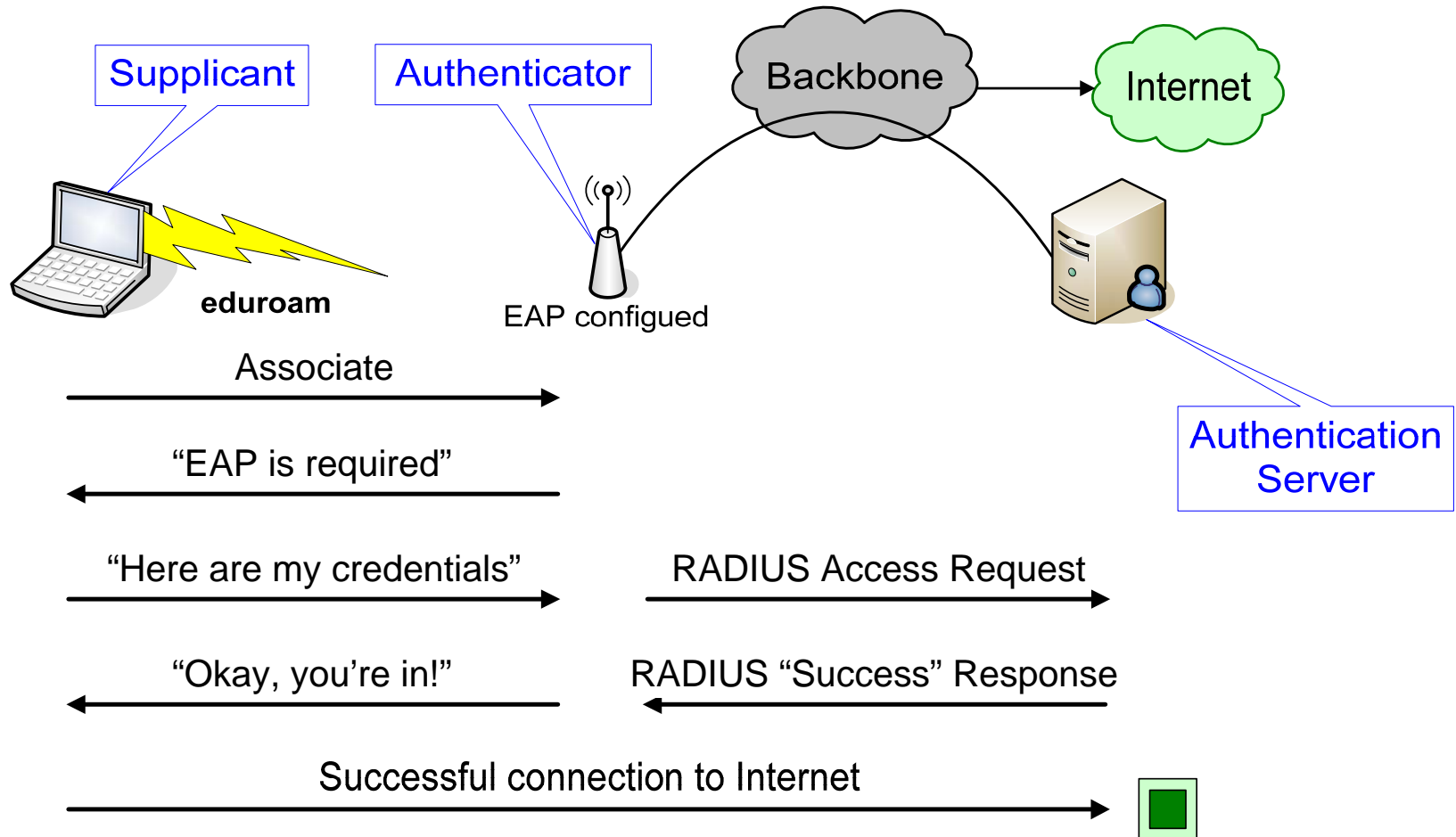


# WPA, 802.1X and EAP

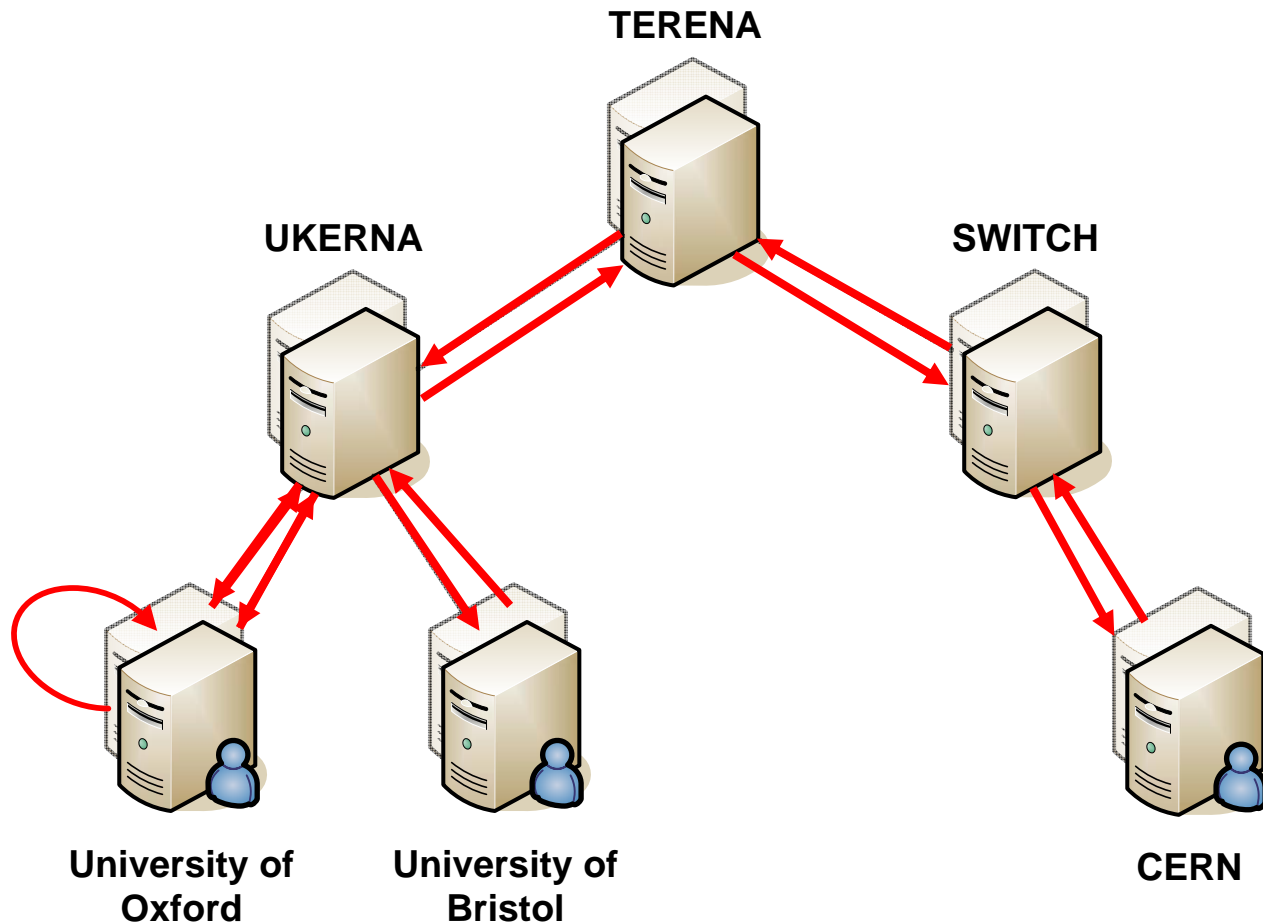


- Built into OS
  - Less invasive
  - Secure and reliable
  - Smooth roaming
- 
- Clients are confusing
  - More work for ITSS

# 802.1X flowchart



# Eduroam in action







# OWL's New Model

(DRAFT!)

# Plans for VPN and 'VISITOR'

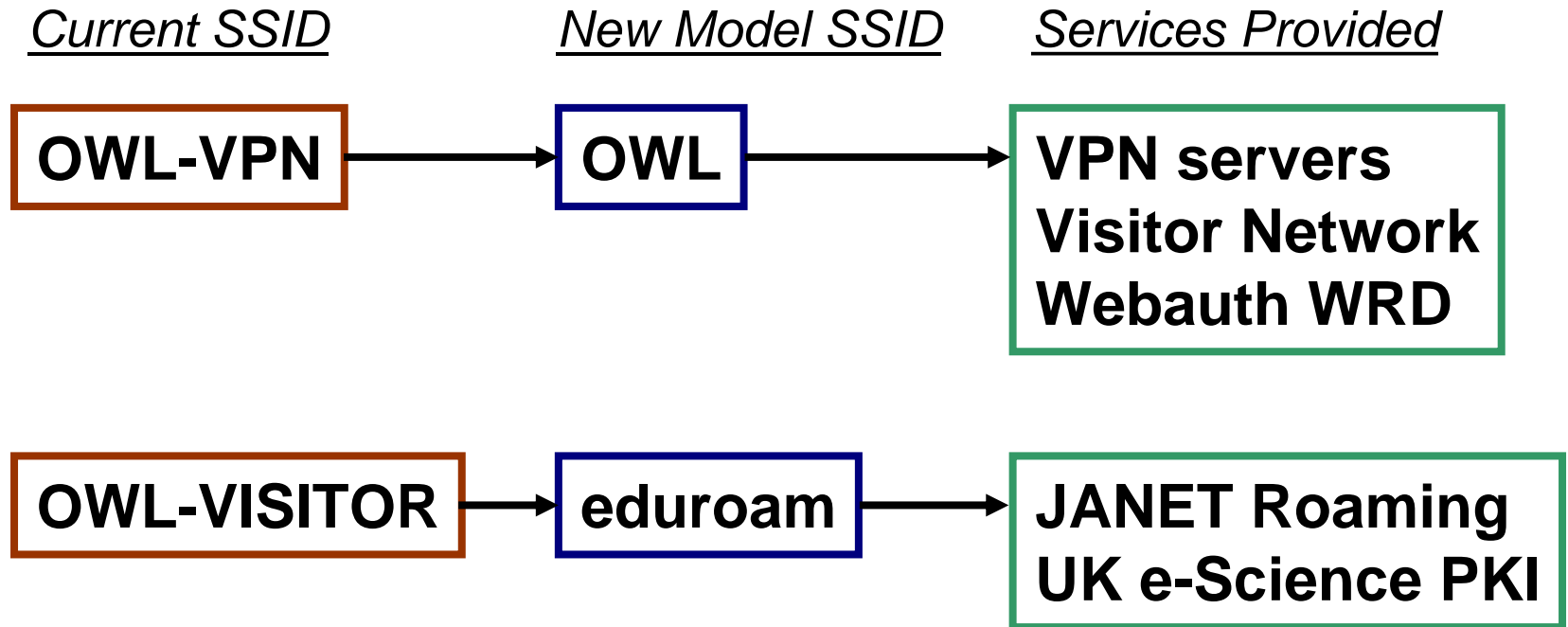


**Available here**

<http://www.oucs.ox.ac.uk/network/wireless/>

- Registration of unit-level VPN servers
- Webauth Web-Redirect service
  - ☐ Targeted at PDAs
  - ☐ Restricted ports
  - ☐ Renamed SSID

# Migrating to the New Model



# Eduroam checklist



1. Register your APs with OUCS
2. Reconfigure for EAP
  - a) Install NAS secrets
  - b) Change SSID
3. Coordinate FroDo port switchover

# Managing user expectations



- Hotspots everywhere
- Laptops are common
- Lots to manage
- ITSS learning curve
- What about VoIP?



# Questions