

# **A New Library Management System (LMS) for Oxford**

Mark Round



# What is OLIS

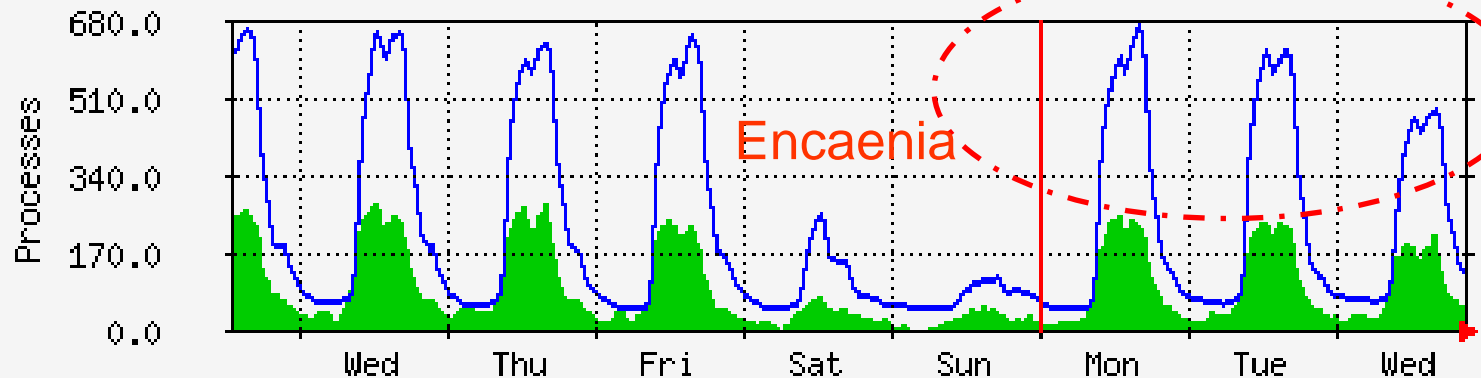
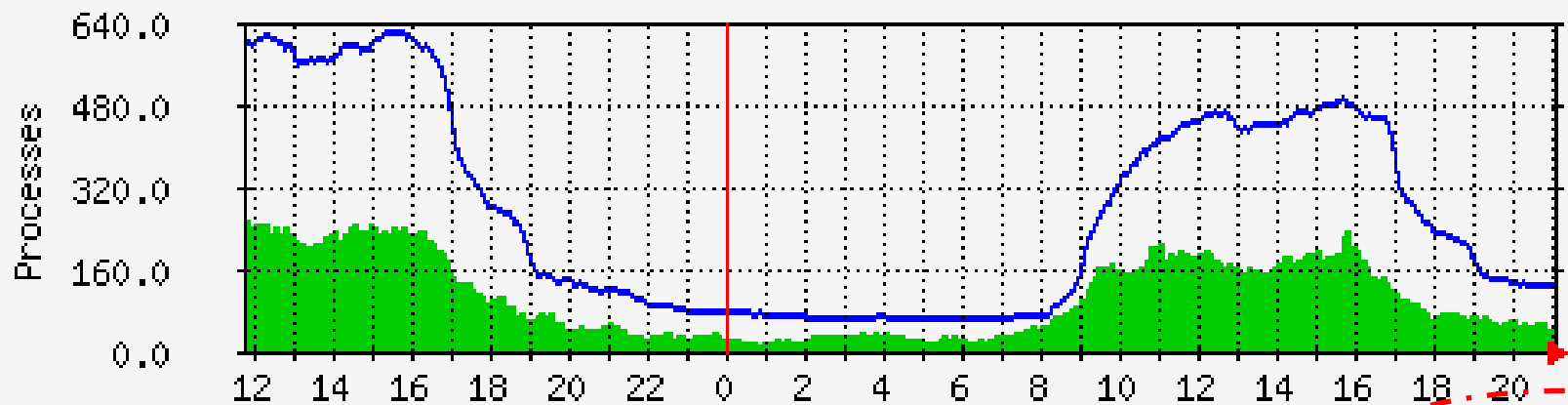
- An integrated library management system for a consortium of ~100 libraries with common IT infrastructure and some centralised support.
- Where are these libraries
  - OULS
  - Departments
  - Colleges
  - Hospitals
  - Externals (e.g Centre for Oxfordshire Studies)

# Who uses OLIS and from where

- Who
  - General public
  - Library members (students / staff / alumni / external etc)
  - Library staff
- Where
  - Oxford Libraries
  - Oxford
  - UK
  - World

# How busy is OLIS – last 24hrs

Green: Z39.50 Blue: Telnet



# So what is changing

- The system itself
- The clients
- The DOS OPAC interfaces
- The backend DB
- The hardware

# System / Database

- Currently:
  - Geac Advance running on IBM UniVerse Database
- Replacement:
  - VTLS Virtua running on Oracle Database

# Clients

- Currently:
  - Telnet
  - Java Telnet
  - Web
  - Staff side clients
- New system:
  - Web for readers
  - PC Client for library staff

# DOS OPACs

- Existing PC technology running DOS and a telnet client for OPAC access will be replaced across OULS and possibly further\* with Sun Ray Terminals





# Existing hardware

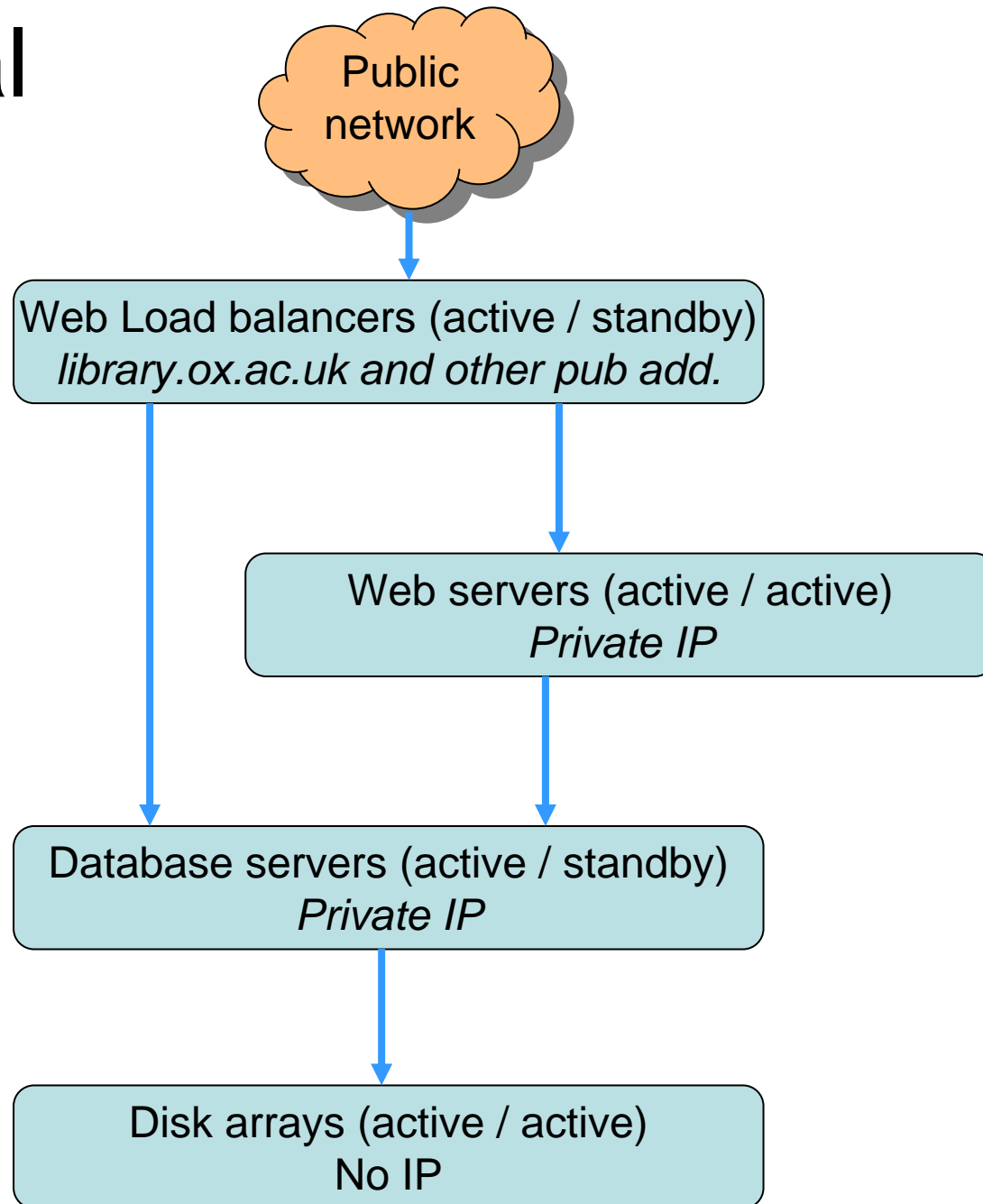
- **Front End**
  - Sun Fire 280R
- **Back End**
  - Sun Fire V890
  - 8 processors
  - 12 disks
- **3<sup>rd</sup> party DR support**



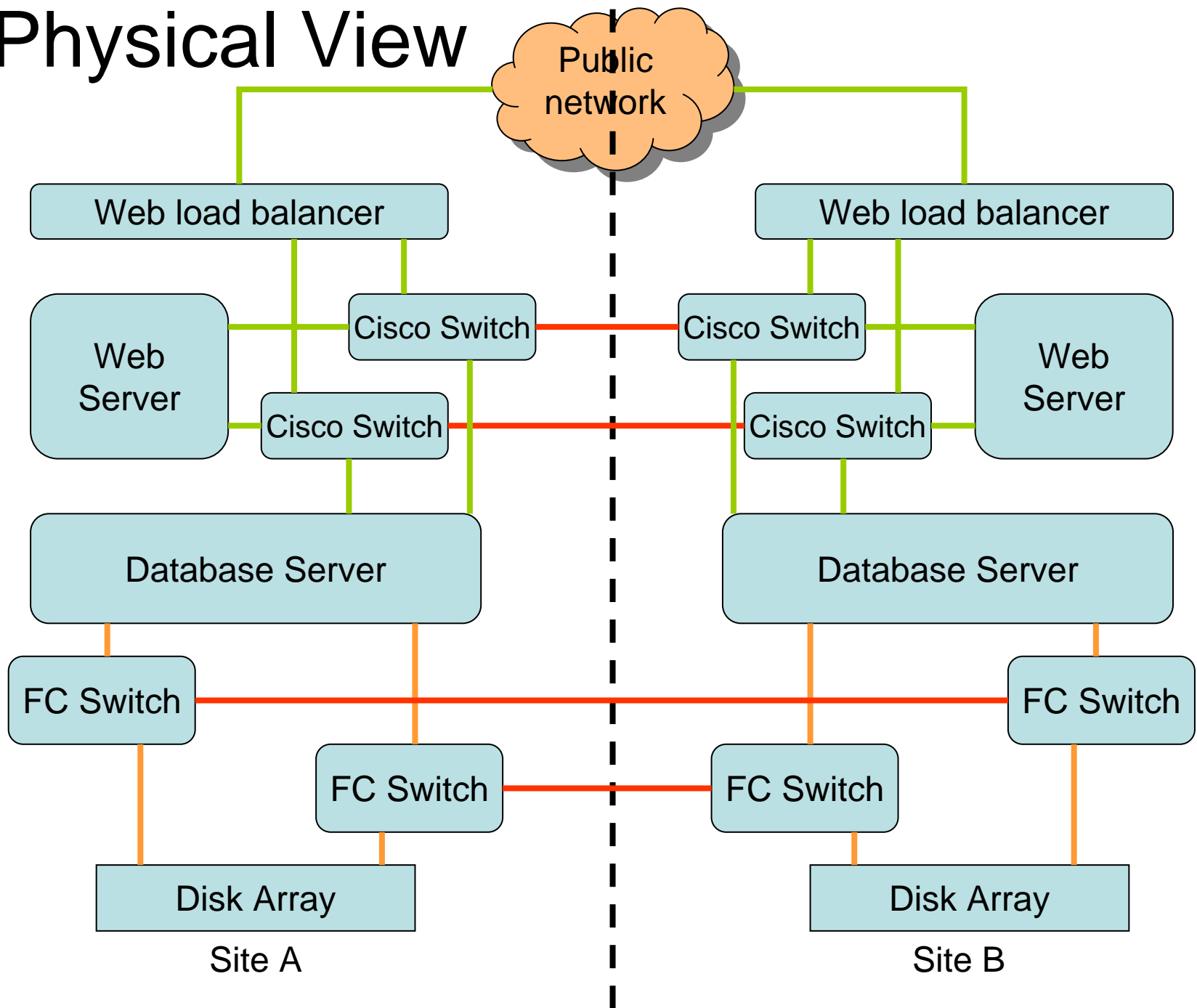
# The replacement has to be

- Highly Available
- Redundant
- Scaleable

# Logical View



# Physical View



# Web Interface

[Close Session](#)

# Prototype OLIS OPAC for training summer 2006 **OLIS**

Home	Browse	Keyword	Heading Keyword	Advanced	Help
------	--------	---------	-----------------	----------	------

[Set Session Filters](#)

Active Filters

No Active Filters

[Basket \(0\)](#)

[Search History](#)

Welcome to the prototype OLIS web OPAC, which will be used for training over summer 2006.

## Experimental "Quick Search"

Use this option to perform a basic keyword search over all of OLIS's indexes. This can be thought of as roughly equivalent to a web text search such as Google. However, as with such web text searches, you may be "swamped" with not-very-relevant results, in which case you should use the Browse option, or a more specific Keyword Search.

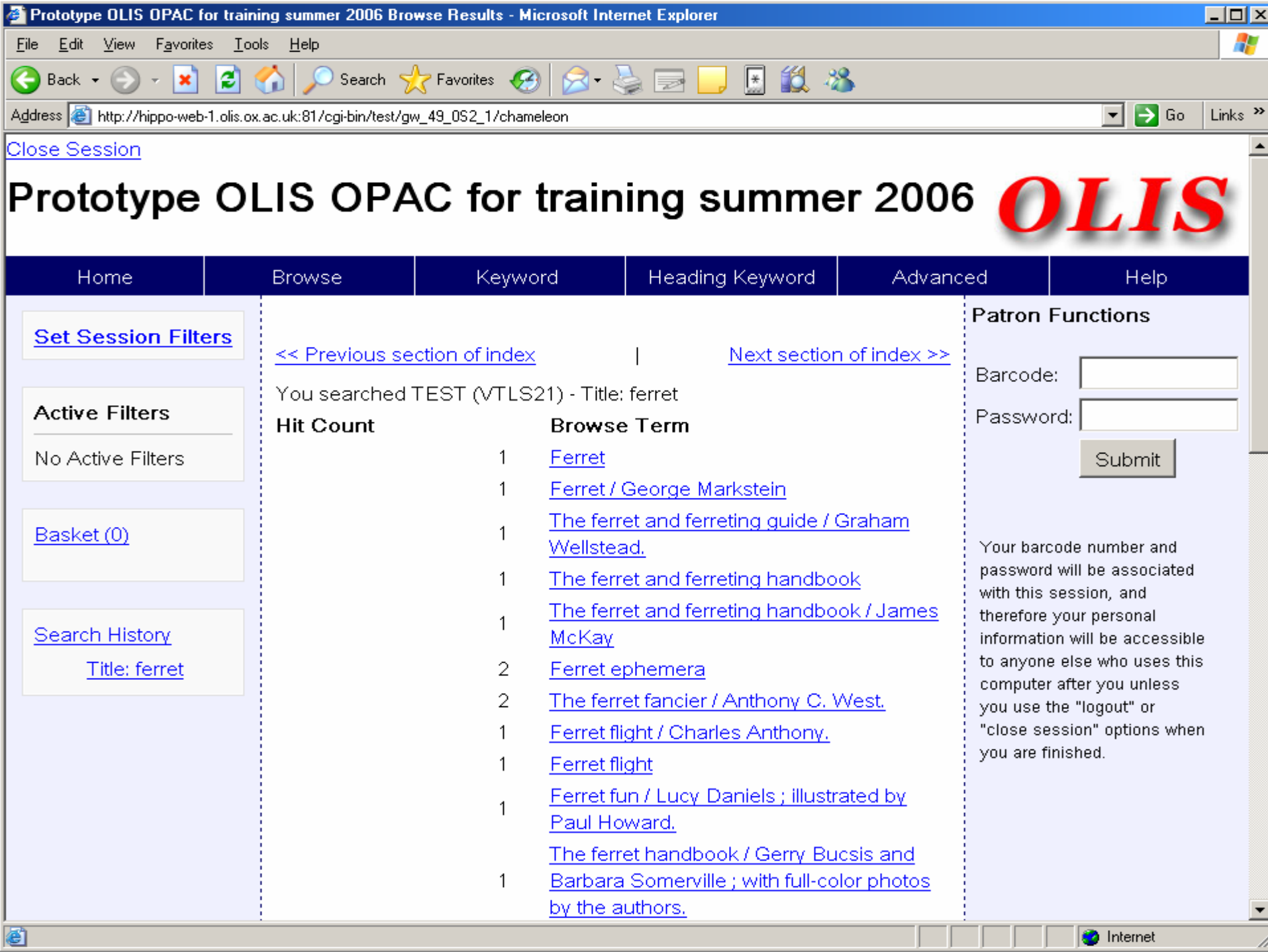
## Patron Functions

Barcode:

Password:

Your barcode number and password will be associated with this session, and therefore your personal information will be accessible to anyone else who uses this computer after you unless you use the "logout" or "close session" options when you are finished.





# Prototype OLIS OPAC for training summer 2006 **OLIS**

Home	Browse	Keyword	Heading Keyword	Advanced	Help
------	--------	---------	-----------------	----------	------

[Set Session Filters](#)

**Active Filters**

No Active Filters

[Basket \(0\)](#)

[Search History](#)

[Title: ferret](#)

[<< Previous section of index](#) | [Next section of index >>](#)

You searched TEST (VTLS21) - Title: ferret

Hit Count	Browse Term
1	<a href="#">Ferret</a>
1	<a href="#">Ferret / George Markstein</a>
1	<a href="#">The ferret and ferreting guide / Graham Wellstead.</a>
1	<a href="#">The ferret and ferreting handbook</a>
1	<a href="#">The ferret and ferreting handbook / James McKay</a>
2	<a href="#">Ferret ephemera</a>
2	<a href="#">The ferret fancier / Anthony C. West.</a>
1	<a href="#">Ferret flight / Charles Anthony.</a>
1	<a href="#">Ferret flight</a>
1	<a href="#">Ferret fun / Lucy Daniels ; illustrated by Paul Howard.</a>
1	<a href="#">The ferret handbook / Gerry Bucsis and Barbara Somerville ; with full-color photos by the authors.</a>

## Patron Functions

Barcode:

Password:

Your barcode number and password will be associated with this session, and therefore your personal information will be accessible to anyone else who uses this computer after you unless you use the "logout" or "close session" options when you are finished.



[Close Session](#)

# Prototype OLIS OPAC for training summer 2006 **OLIS**

Home Browse Keyword Heading Keyword Advanced Help

[Set Session Filters](#)

**Active Filters**

No Active Filters

[Basket \(0\)](#)

[Search History](#)

[Title: ferret](#)

Select below to return to the last:

first record |previous record |next record |last record  
[full](#) |[marc](#)

Record 1 of 1

You searched TEST (VTLS21) - Title: ferret

**Title** [Ferret](#)

**Publisher** [\(Durham City\), \(1969.\)](#)

No Holdings information is available for this record.

## Keyword Search

Words:

Search Type:




AND




## Patron Functions

Barcode:

Password:

Your barcode number and password will be associated with this session, and therefore your personal information will be accessible to anyone else who uses this computer after you unless you use the "logout" or "close session" options when you are finished.

[Close Session](#)

# Prototype OLIS OPAC for training summer 2006 **OLIS**

Home Browse Keyword Heading Keyword Advanced Help

[Set Session Filters](#)

**Active Filters**

No Active Filters

[Basket \(0\)](#)

[Search History](#)

[Title: Oxford](#)  
[Author: brown](#)  
[Title: ferret](#)

Select below to return to the last:

Sort by:

☒ Ascending ☐ Descending

**You searched TEST (VTLS21) - Title: Oxford**

previous set | [1](#) [2](#) [3](#) [4](#) [5](#) [6](#) [7](#) [8](#) [9](#) [10](#) [11](#) [12](#) [13](#) [14](#) [15](#) ... [1000](#) | [next set](#)

Records 1 through 20 of 20000

1

**Request**

[full](#)  
[holdings\(2\)](#)  
[marc](#)

**Title**

Indian ritual and its exegesis / edited by  
 Richard F. Gombrich

**Publisher**

Delhi : Oxford University Press, 1988

Select to  
 add record  
 to basket

☐

**Patron Functions**

Barcode:

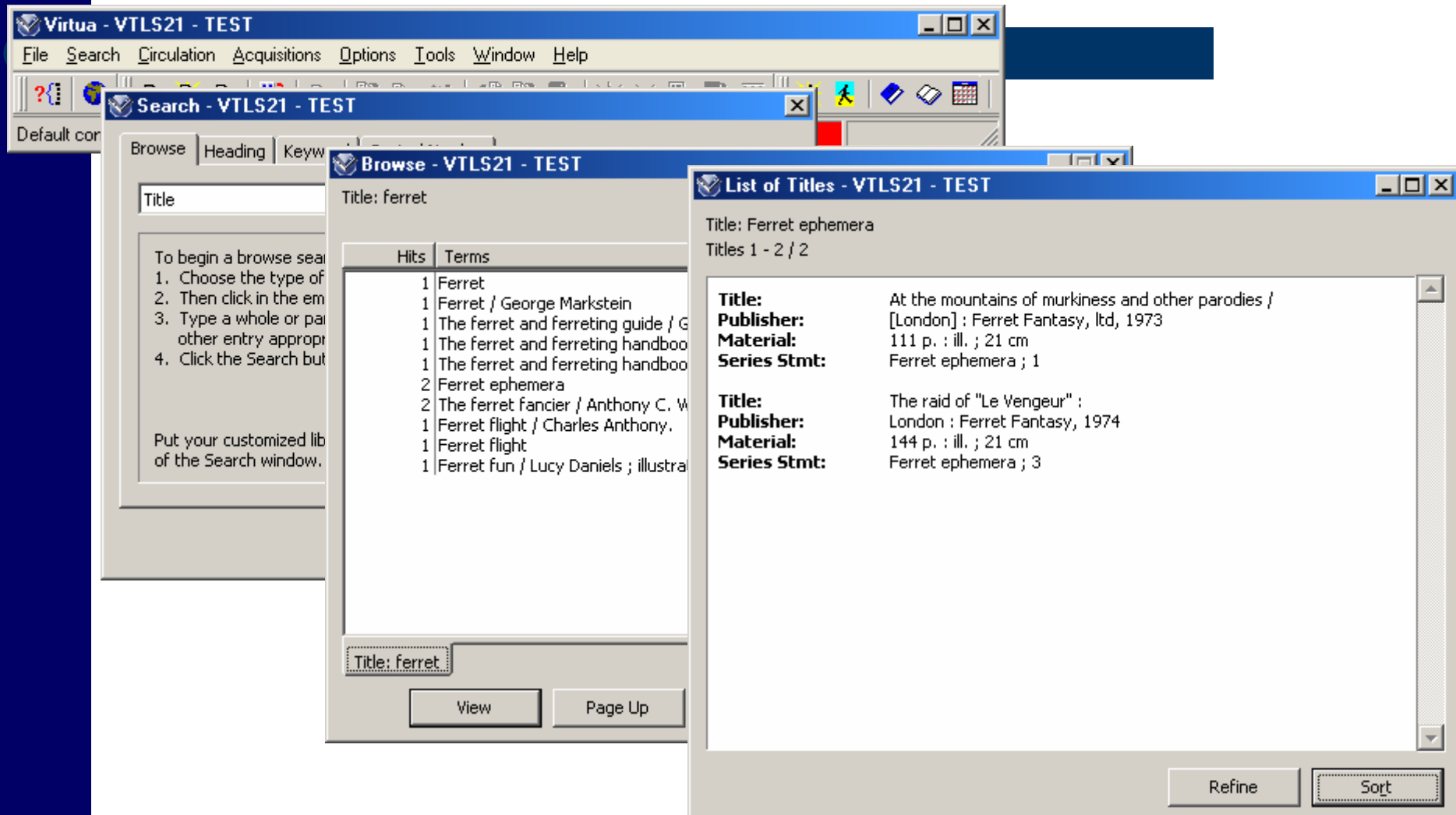
Password:

Your barcode number and password will be associated with this session, and therefore your personal information will be accessible to anyone else who uses this computer after you unless you use the "logout" or "close session" options when you are finished.

# Staff Client

- Windows based
- Requires 2000 or XP
- 128MBytes RAM
- 150MBytes Hard Disk Space

# What does it look like



# What it means to IT Support Staff

- Lower number of interfaces
- One client for library staff with simple install routine
- Long term will have a simple update routine
- Less complexity with required network ports and firewall setting

# Further Information

- <http://www2.ouls.ox.ac.uk/lms/>