

ORISIS Client Software

Installing Additional Tools For OSIRIS Users

Niall Hedderley, Central Admin MIS

2005 ITSS Conference

OSIRIS Overview

- Introduced 2004
- Software based on Oracle Financials
 - Primary client web browser-based

Additional Software: Additional Capabilities

What Software?

- Discoverer
 - a general-purpose reporting tool
- ADI
 - (Application Data Interface)
 - an import/export tool
 - OLE link between database and spreadsheet

Why?

- Discoverer:
 - more flexible reporting; beyond what is available by default
- ADI:
 - Allowing a flexible download of data - especially for ledger and budgeting purposes
 - Where enabled, allowing a direct upload of ledger and budgeting data.

Detail

- Both are Win32 based applications
- Both rely on Oracle “Homes”

Oracle Homes

- Combined executable and configuration stores

Installation (1)

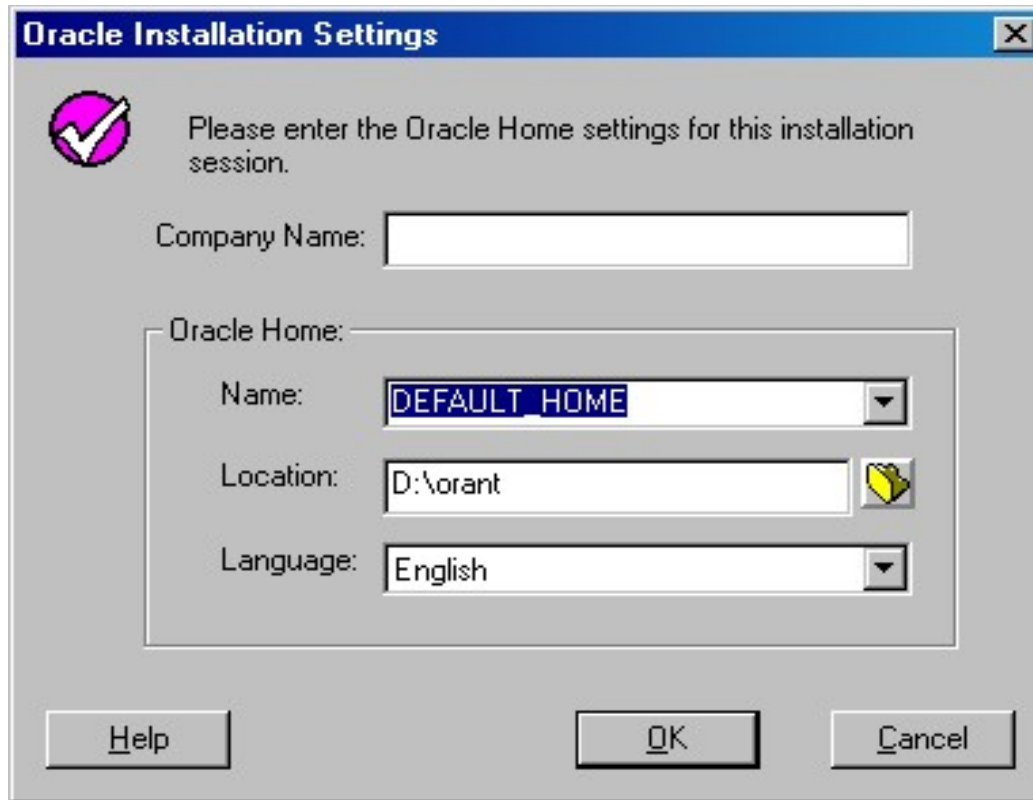
- TNSNAMES files
 - OSIRIS =
 - (DESCRIPTION =
 - (ADDRESS_LIST =
 - (ADDRESS = (PROTOCOL = TCP)(HOST = missun17.offices.ox.ac.uk)(PORT = 1611))
 - (ADDRESS = (PROTOCOL = TCP)(HOST = missun11.offices.ox.ac.uk)(PORT = 1532))

Installation (2.1)

- Discoverer:



Discoverer Installation (2.1)



The image shows a Windows-style dialog box titled "Oracle Installation Settings". It contains a message icon (a checkmark in a circle) and the text "Please enter the Oracle Home settings for this installation session." Below this, there are three input fields: "Company Name:" (an empty text box), "Oracle Home:" (a container for sub-fields), and "Language:" (a dropdown menu). The "Oracle Home:" container includes "Name:" (a dropdown menu with "DEFAULT_HOME" selected), "Location:" (a text box with "D:\orant" and a folder icon), and "Language:" (a dropdown menu with "English" selected). At the bottom, there are three buttons: "Help", "OK", and "Cancel".


Oracle Installation Settings

Please enter the Oracle Home settings for this installation session.

Company Name:

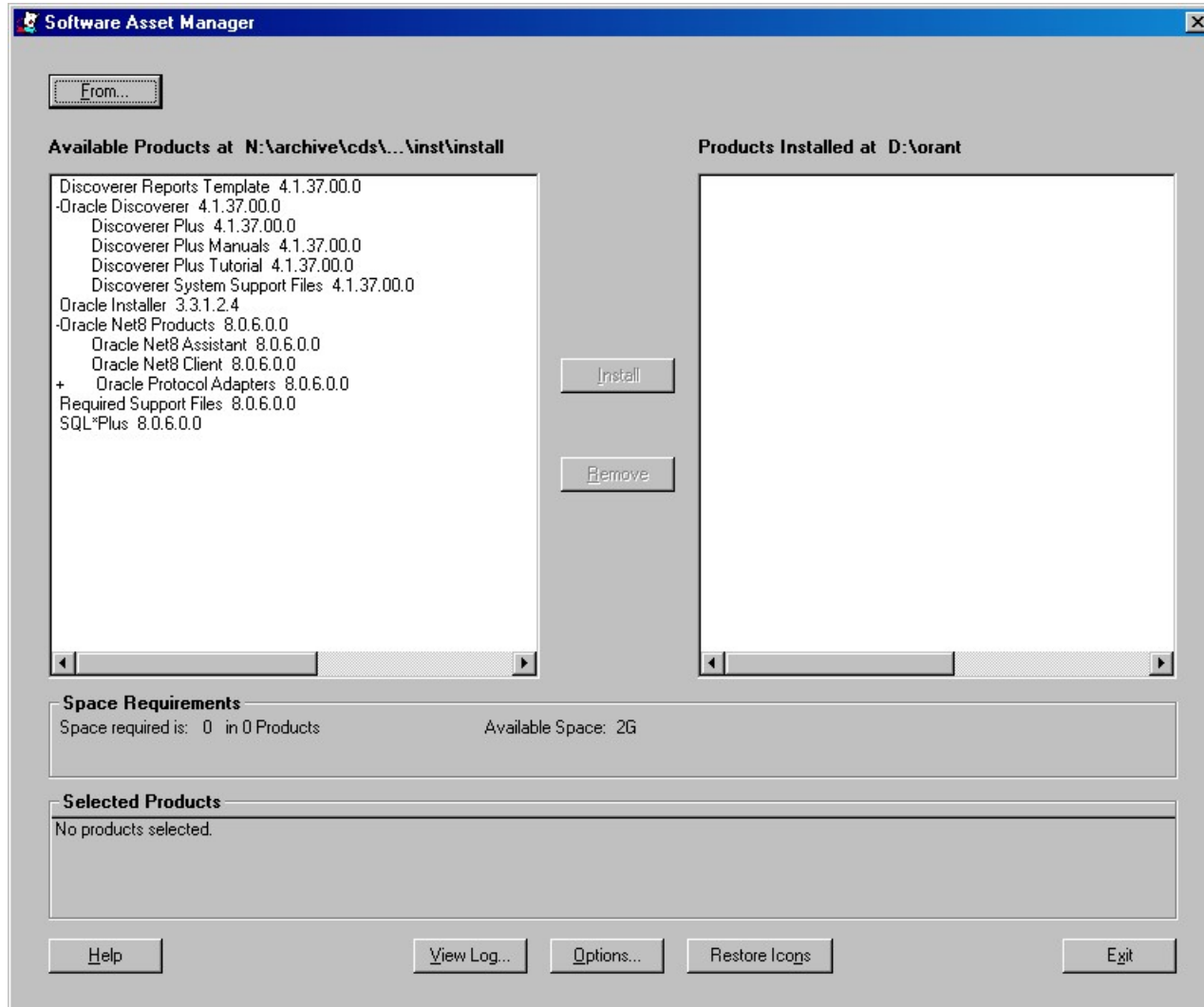
Oracle Home:

Name:

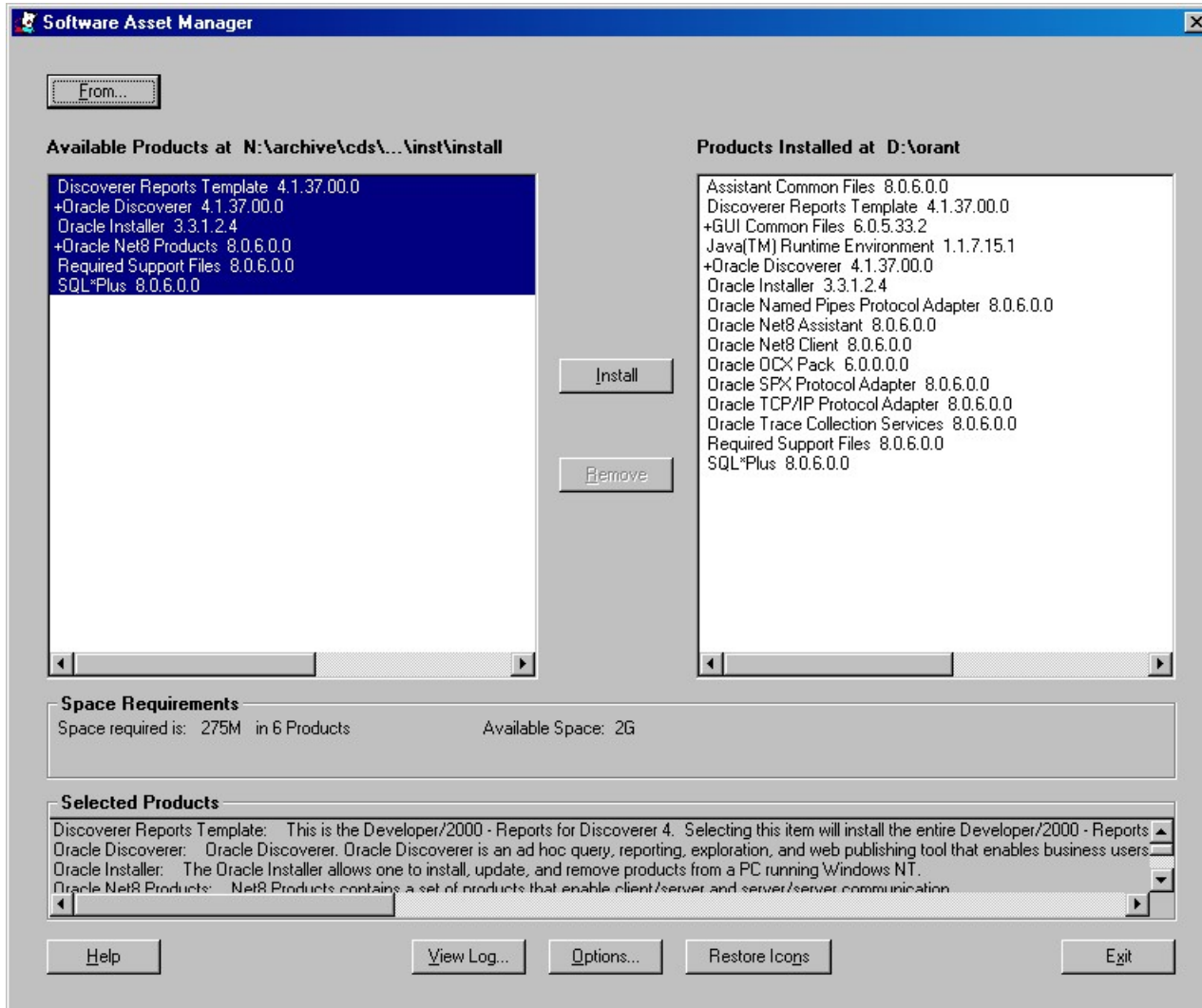
Location: 

Language:

Discoverer Installation (2.1)



Discoverer Installation (2.1)



Discoverer Post Install

Connect to Oracle Discoverer [X]



**Discoverer™
Release 4
ORACLE**

Connection:

Username:

Password:

Connect:

Connect

Cancel

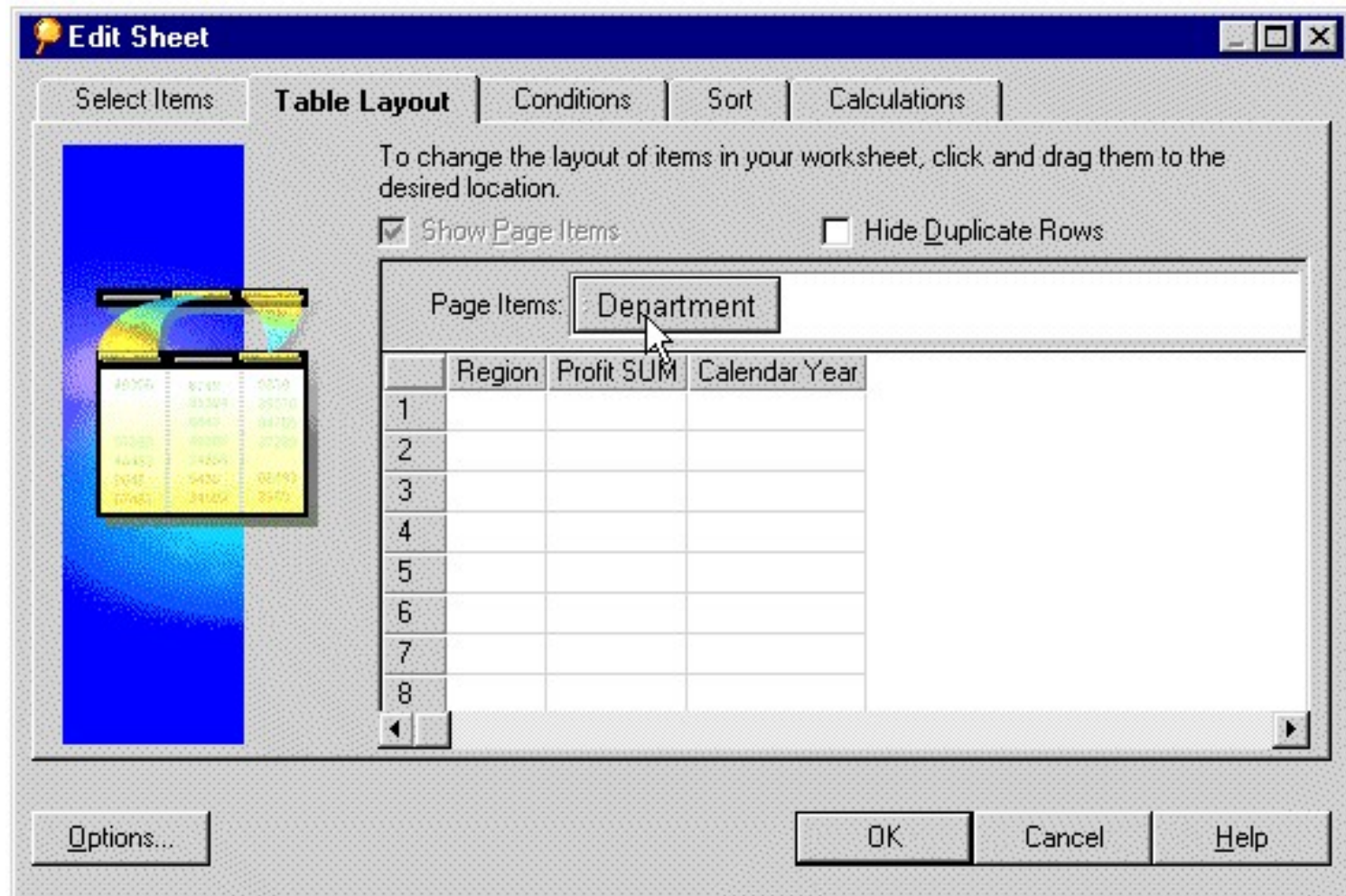
Help

About...

Status

Please enter your username, password and the database name.

Discoverer

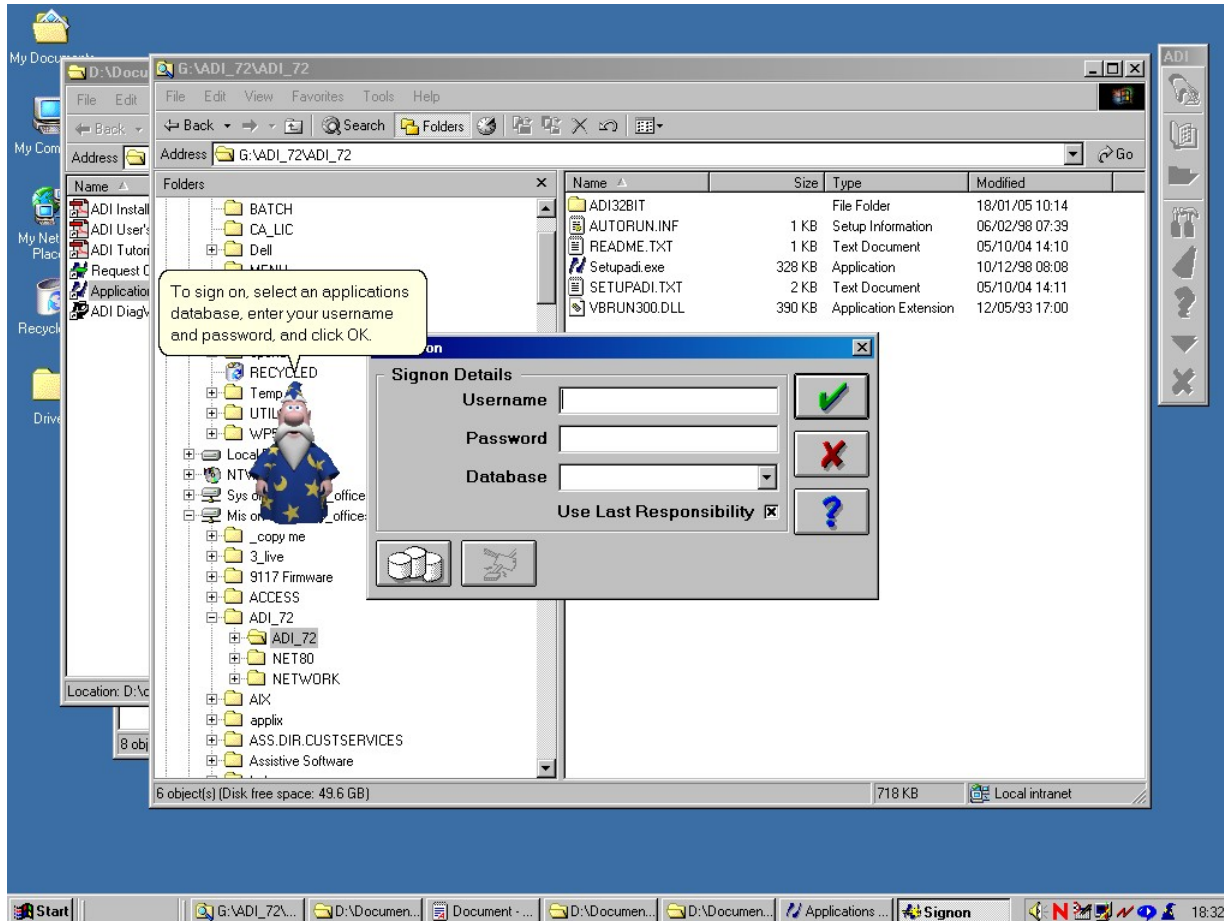


Installation (2.2)

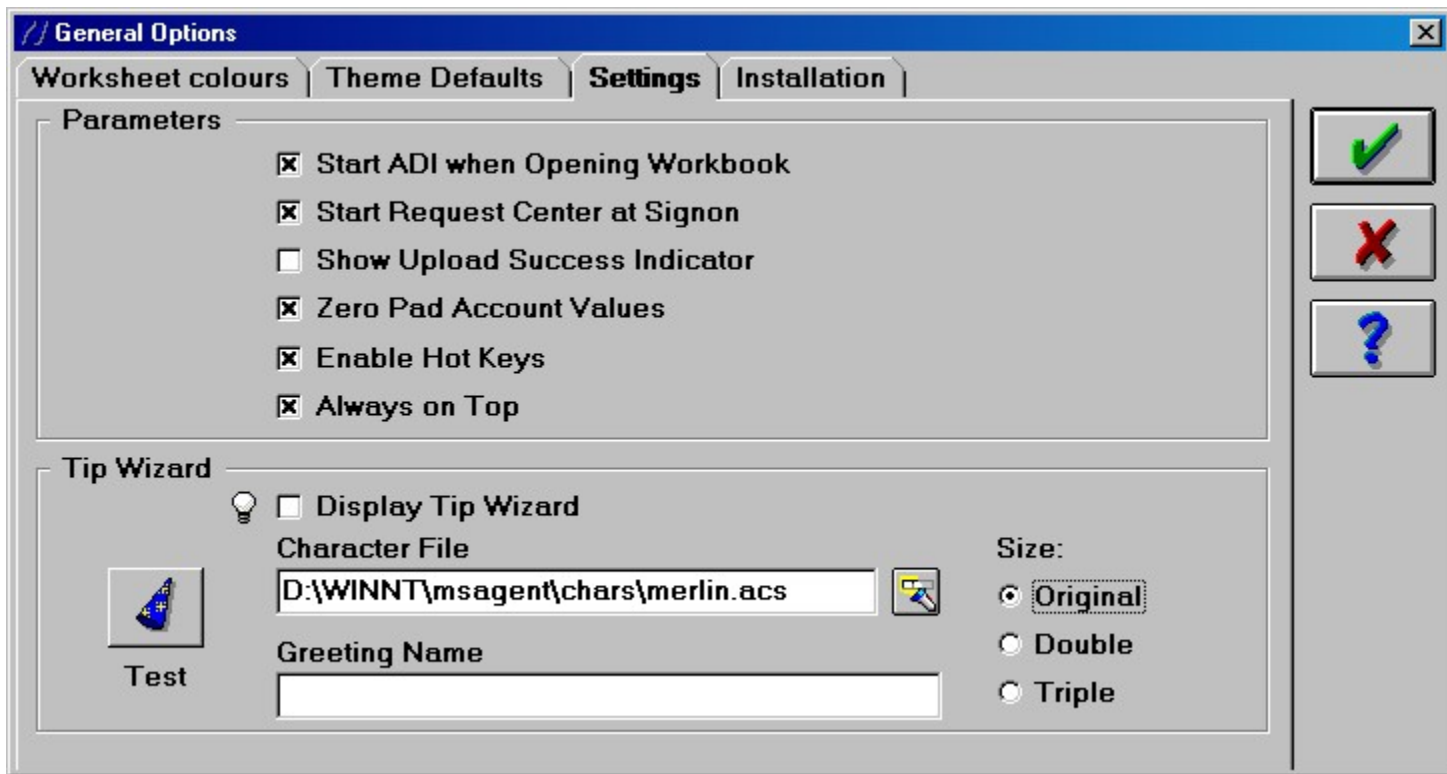
- ADI:



ADI Post Install



ADI Post Install



ADI Post install (2)

Signon [X]

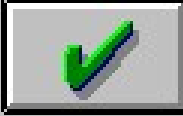
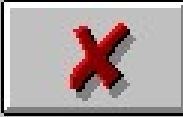

Signon Details

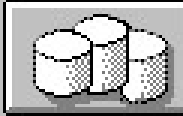

Username

Password

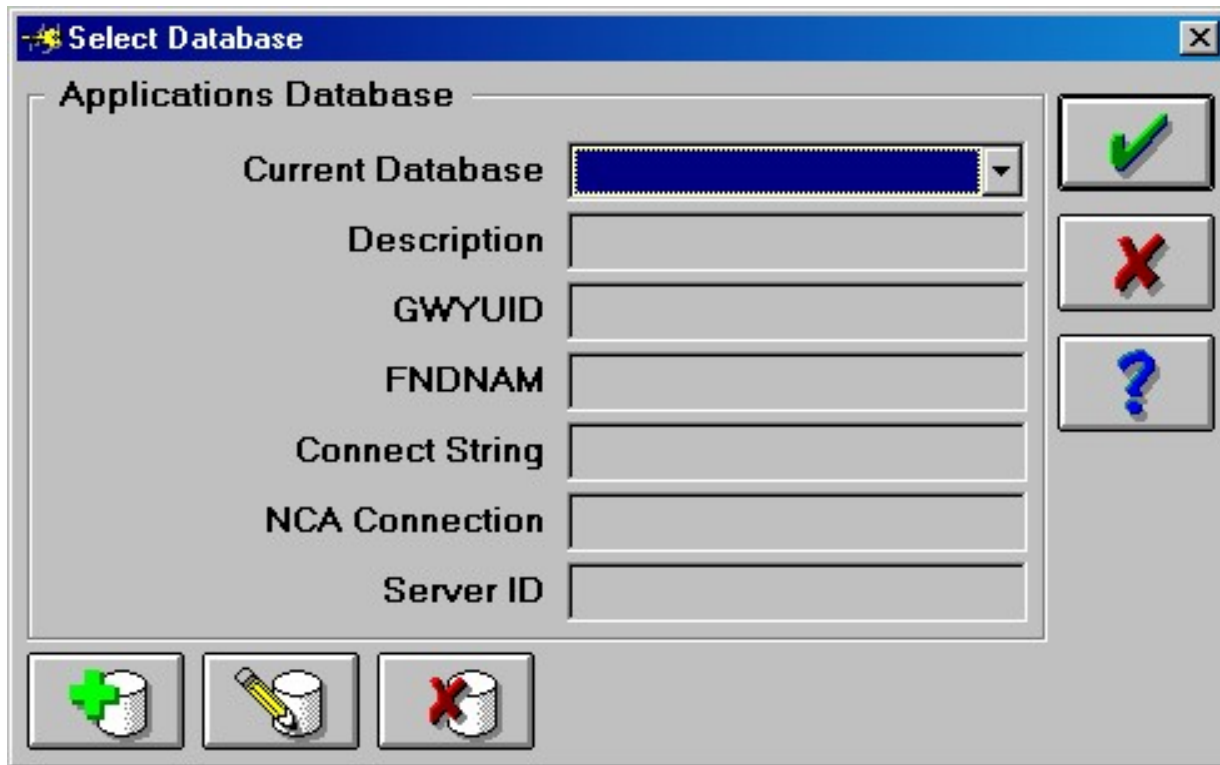
Database

Use Last Responsibility

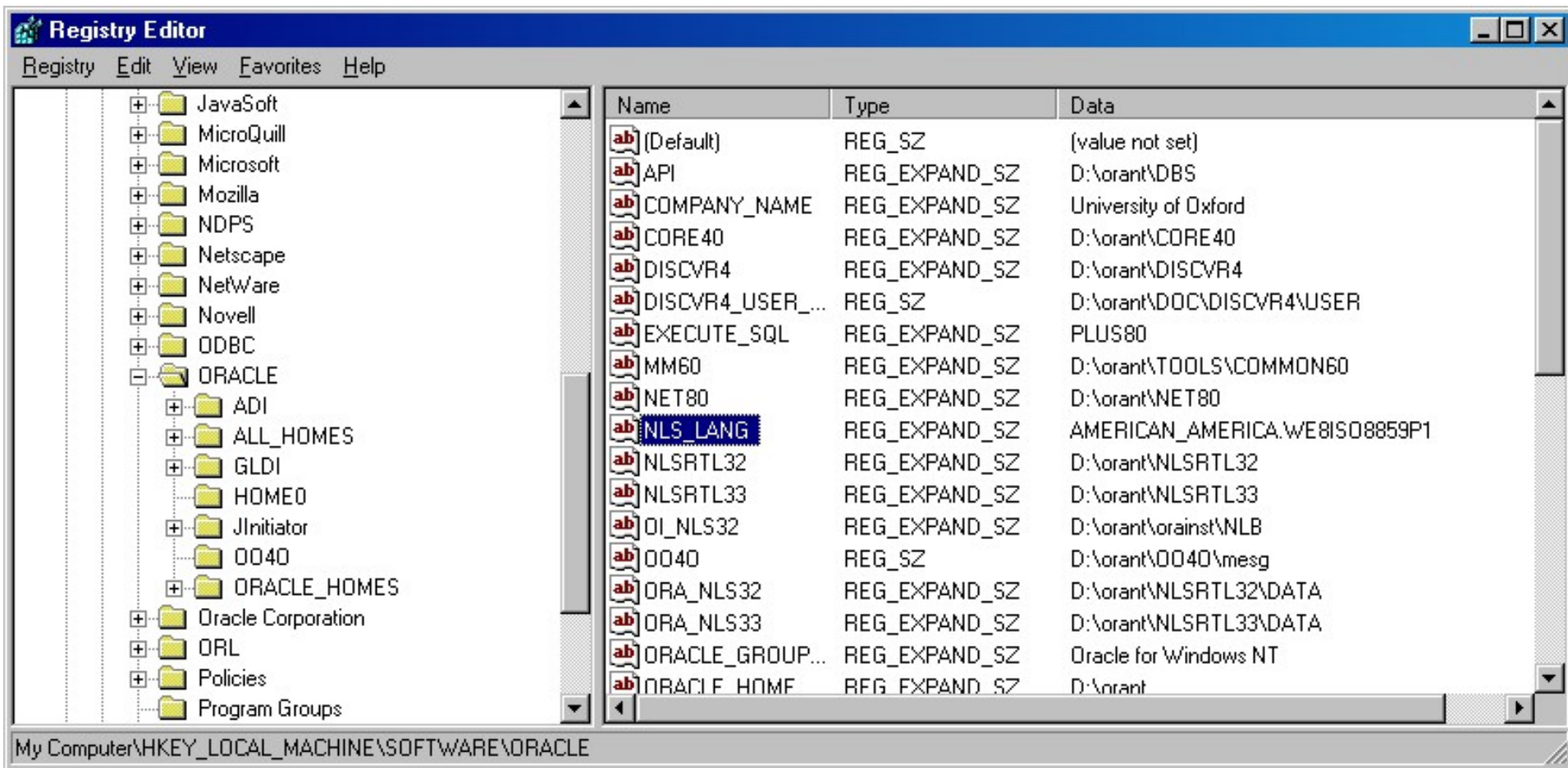
ADI Post Install (2.1)



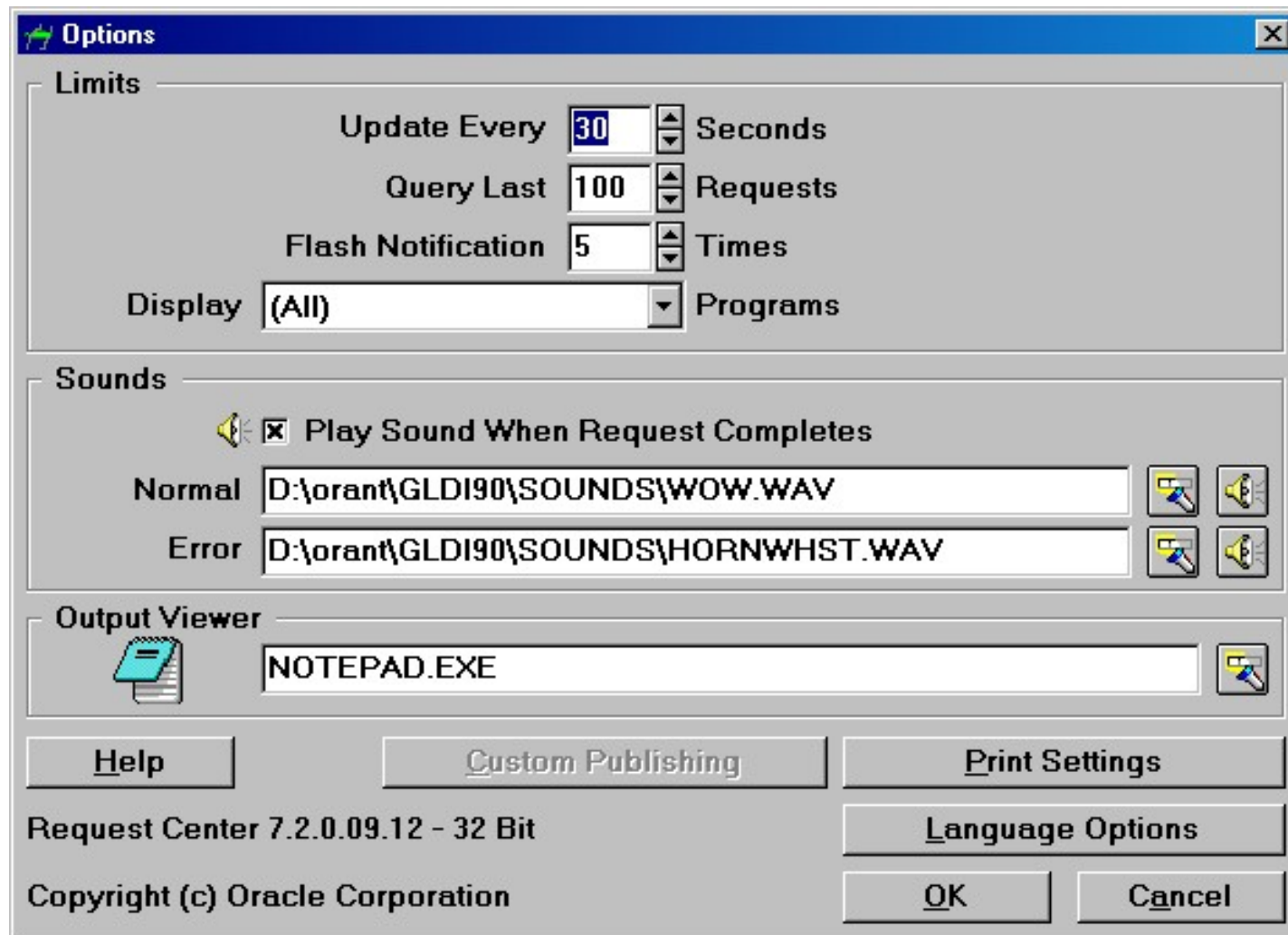
ADI Post Install (2.1) cont'd

- For “Live” OSIRIS database
 - Name: Osiris
 - Description: Osiris Live
 - GWYUID: applsyspub/pub
 - FNDNAM: apps
 - Connect String: osiris

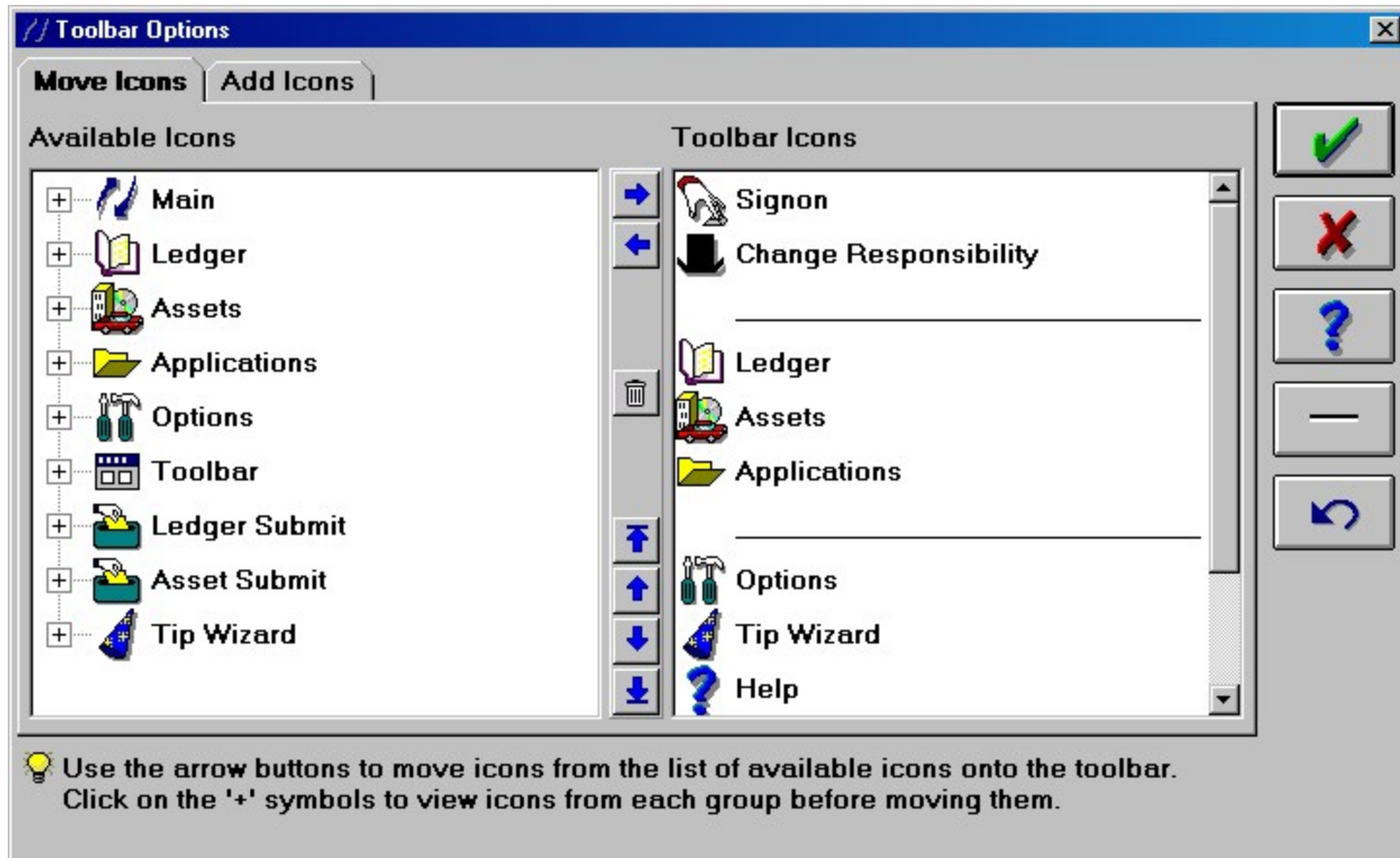
ADI Post Install (2.2)



ADI: What Might Annoy You



ADI: What Might Annoy You (2)



Recap

- Discoverer
 - a general-purpose reporting tool
- ADI
 - an import/export tool

Questions?