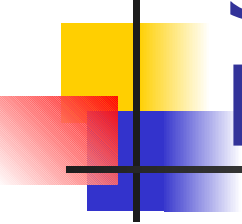


Patch management with ZenWorks



James Dore,
IT Officer,
New College

james.dore@new.ox.ac.uk / <http://www.new.ox.ac.uk/~james/zwpm>



Should you need to ask, here's why...

- Blaster, Sasser, Sadmind...
- Bug fixes in later software releases (Applications as well as OS)
- Consistent environment



Caveats...

- Windows 2000, XP and 2003
- Microsoft does not support earlier versions except via windowsupdate.com
- (although NT uses the same registry keys – might work!)



Options

- The Quick option
- The Cheap but clever option
(good for firewalled environments)
- The Belt and Braces option



The Quickie

- Use Zenworks to push registry keys configuring the Automatic Updates Client
- What is the Automatic Updates Client?
- Start -> Control Panel -> Automatic updates
- 7 registry keys
- Can be pushed out with a Simple Application object
- Can be automatically re-run to ensure consistency
- Change one object to change multiple PC's



Registry Keys, #1

HKLM\Software\Policies\Microsoft\Windows\WindowsUpdate\AU\

- **NoAutoUpdate**
- Range = 0|1. 0 = Automatic Updates is enabled (default), 1 = Automatic Updates is disabled.



Registry Keys, #2

- **HKLM\Software\Policies\Microsoft\Windows\WindowsUpdate\AU**
 - **AUOptions**
 - Range = 2|3|4. 2 = notify of download and installation, 3 = auto download and notify of installation, and 4 = auto download and scheduled installation. All options notify the local administrator



Registry Keys, #3

- **HKLM\Software\Policies\Microsoft\Windows\WindowsUpdate\AU**
 - **ScheduledInstallDay**
 - Range = 0|1|2|3|4|5|6|7. 0 = Every day; 1 through 7 = the days of the week from Sunday (1) to Saturday (7).



Registry Keys, #4

- HKLM\Software\Policies\Microsoft\Windows\WindowsUpdate\AU
 - **ScheduledInstallTime**
 - Range = n; where n = the time of day in 24-hour format (0-23).

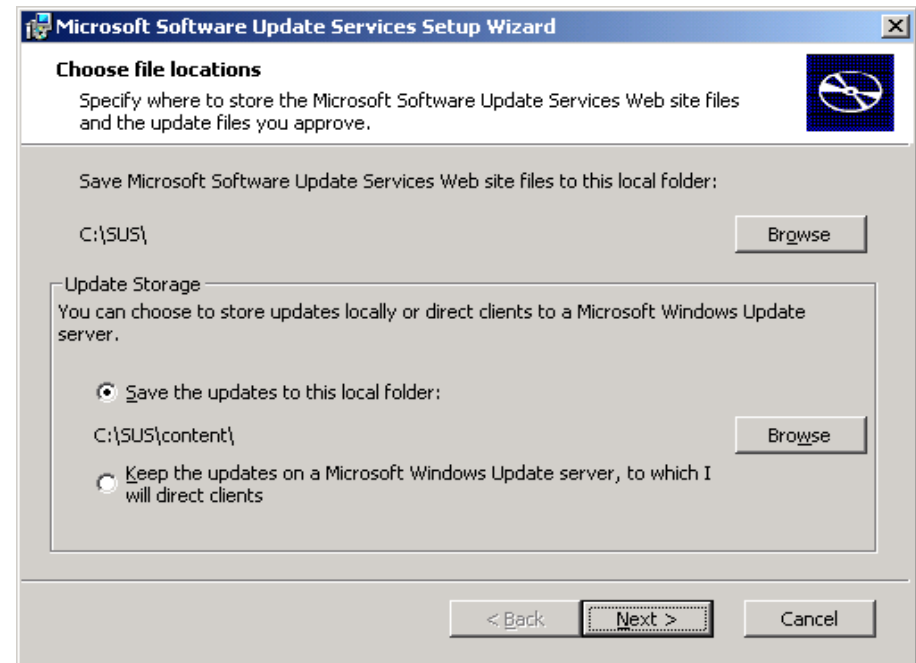


The Cheap and clever option

- Run your own Microsoft Software Update Server (SUS)
- Requires a Windows 2000/2003 server with IIS
- SUS is a free download!
- <http://www.microsoft.com/windowsserv>

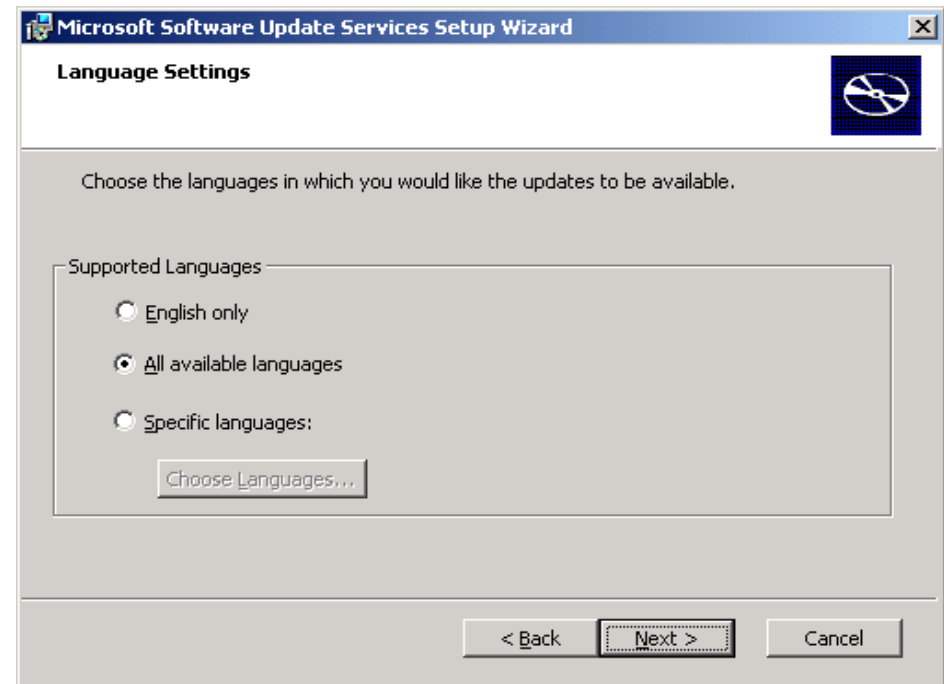
Installing SUS 1

- Download the installer. Run it.
- Accept the license, then decide where you want to store your local copy of the patches as so:



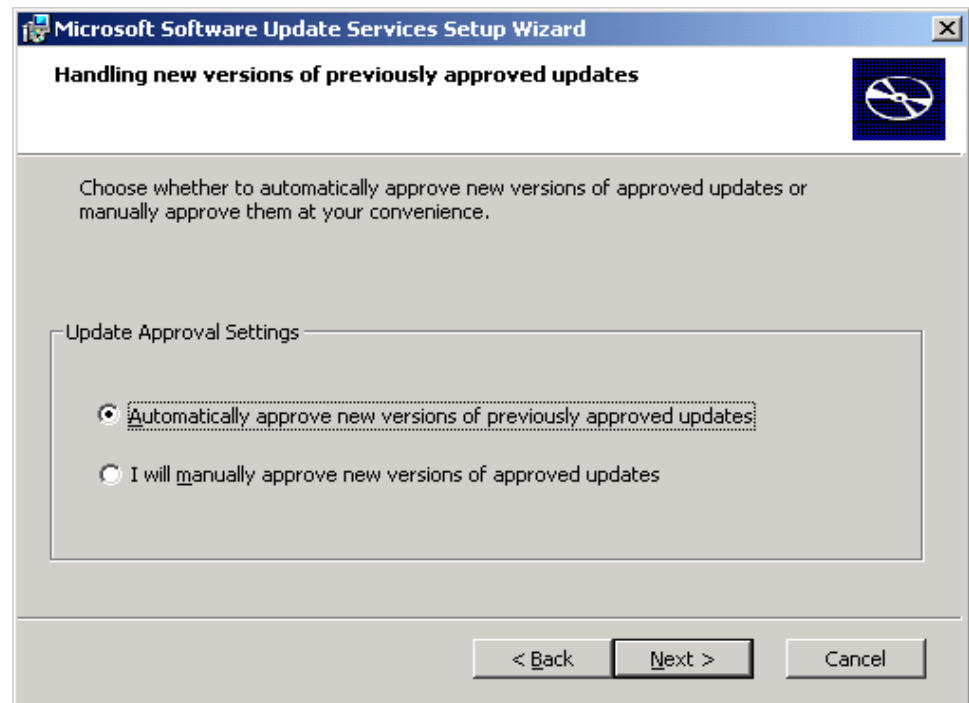
Installing SUS, 2

- Decide which language versions you want.



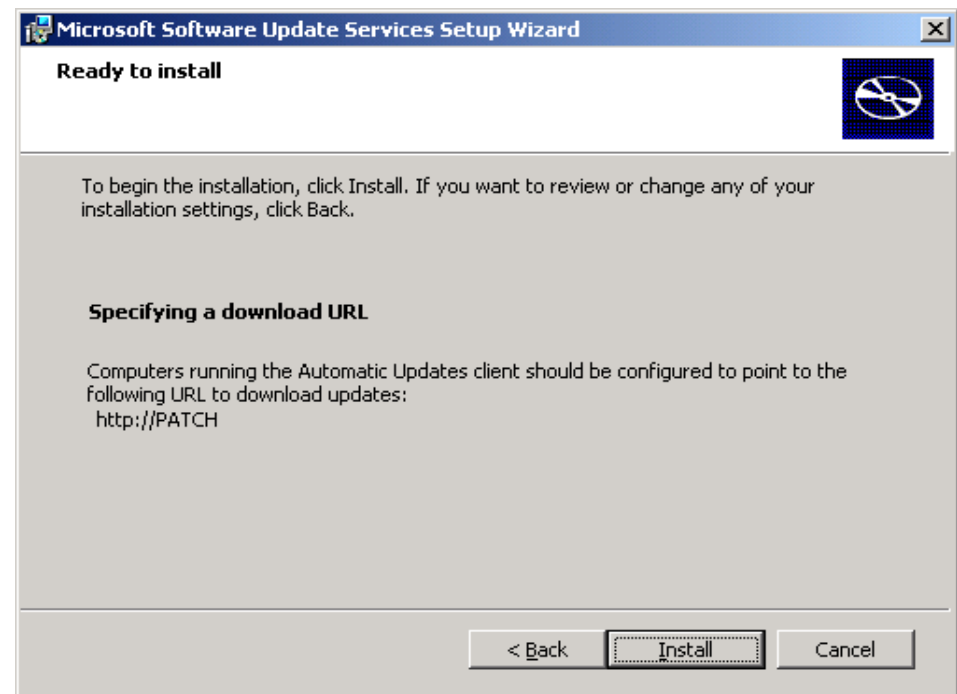
Installing SUS, 3

- Decide how you want to approve updates.
- All /new/ updates must be manually approved, but revised versions can be automatically accepted.



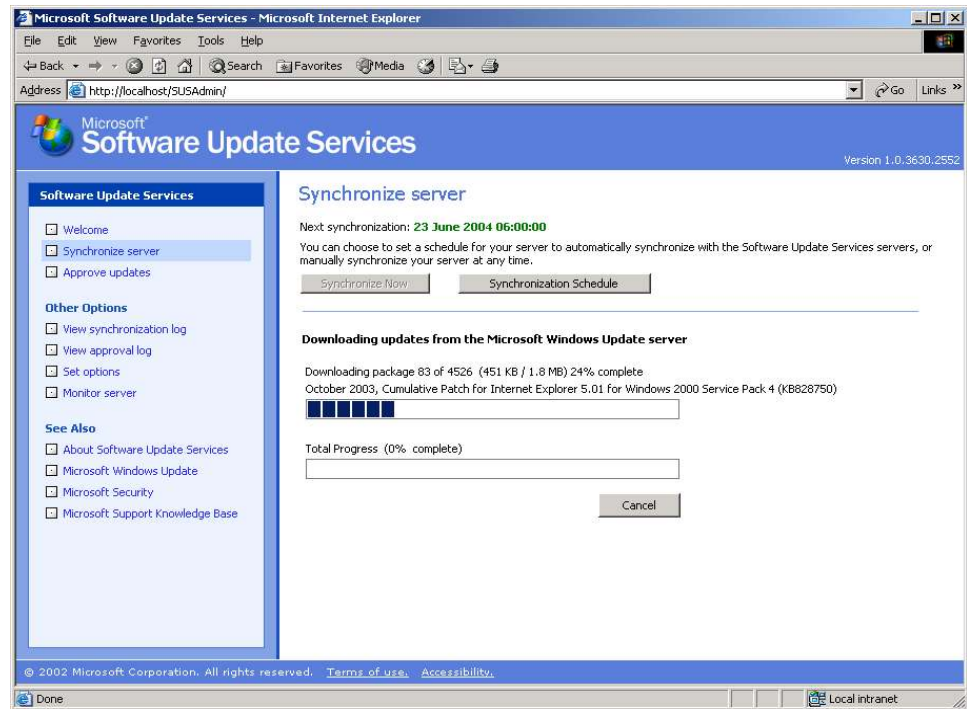
Installing SUS, 4

- Ready to install!



Administering SUS

- Done via a web browser, either on the same machine, or remotely.
- First, sync your SUS Server
- Then set a schedule



Time for a live demo.... <http://patch.new.ox.ac.uk/SUSAdmin>



Configure your workstations

- Three more registry keys, which further modify the Automatic Updates Client
- Tells the workstation to use a Specific WU or SUS server
- Specifies that server



Registry Keys, #5

- HKLM\Software\Policies\Microsoft\Windows\WindowsUpdate\AU
 - **UseWUServer**
 - Set this to 1 to enable Automatic Updates to use the Software Update Services server as specified in the **WUServer** value.



Registry Keys, #6

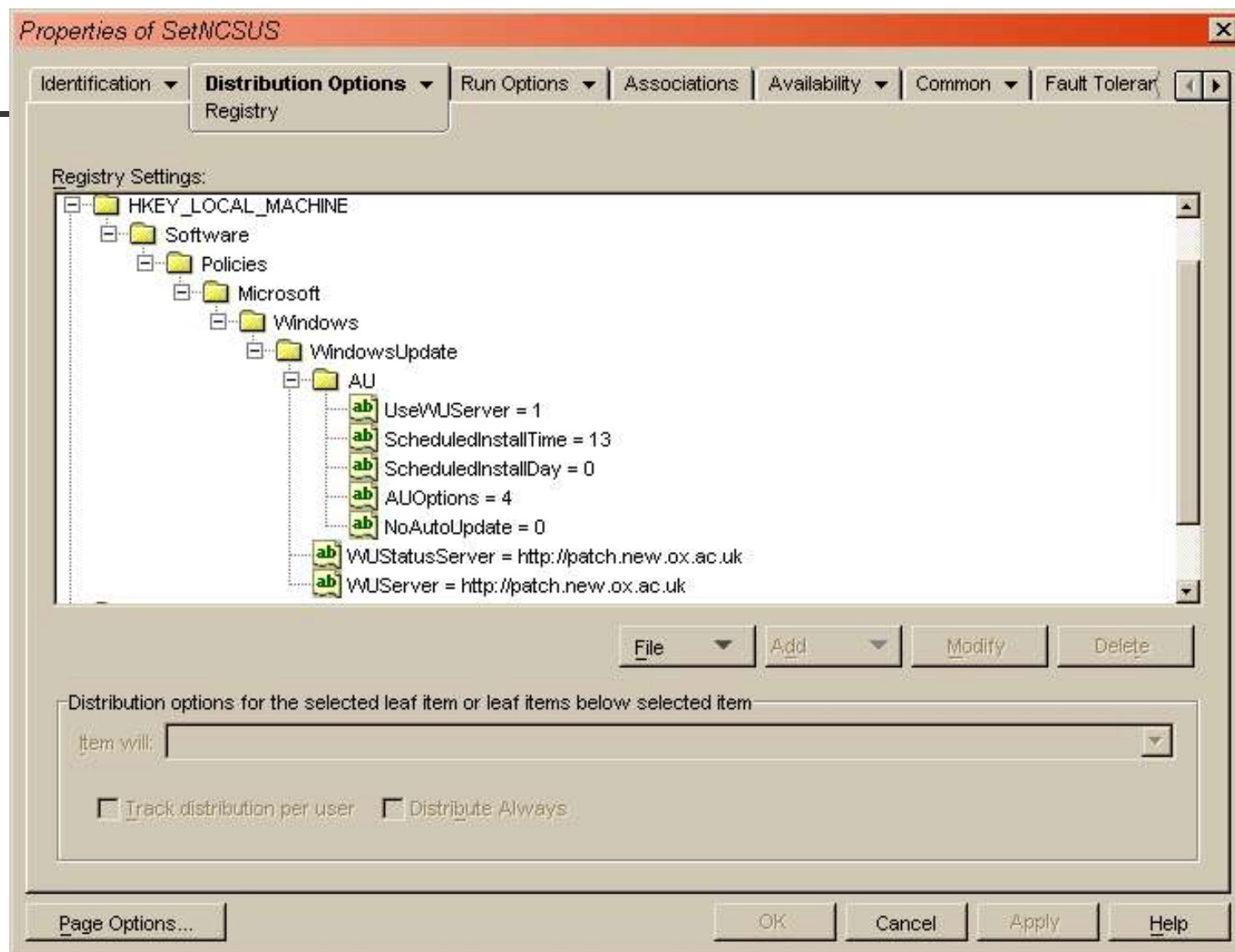
- HKLM\Software\Policies\Microsoft\Windows\WindowsUpdate\
 - **WUServer**
 - Sets the Windows Update intranet server by HTTP name (for example, <http://intranetSUS>).



Registry Keys, #7

- HKLM\Software\Policies\Microsoft\Windows\WindowsUpdate\
 - **WUStatusServer**
 - Sets the Windows Update intranet statistics server by HTTP name (for example, <http://intranetSUS>).

All the Reg keys together:





Zenworks Caveats

- Zenworks for Desktops 4 makes things much easier
- Registry modifications need local Administrator rights
- ZfD 4 (and possibly 3.2) allow this, without giving your users local Administrator rights
- Otherwise, the installing user needs to be a workstation Administrator.



Belt and Braces

- New Novell product: ZenWorks Patch Management
- Not a new product – Novell have licensed PatchLink Update Services (PLUS)
- An internet-based repository of software patches, which you can mirror locally.



ZenWorks Patch Management

- Covers not only Windows operating systems, but applications as well
 - And not only Microsoft applications
 - Adobe, Macromedia, Corel...



How it works

- Installs a small client utility on workstations (deploy it with ZfD!)
- This analyses installed software versions
- Retrieves specific patches from your mirror
- Very similar to SUS, but far more broad in scope.



Licensing requirements

- Demo version has 10 client license for 90 days.
- Salford MLA: £20 for media, £2.71 per seat, per year



System requirements

- Windows 2000/2003 server
- IIS
- No other web services – so needs it's own hardware
- Comprehensively broke SUS when installed on same machine!
- Requires lots of disk space – about 8Gb
- Peculiarly, exists outside of eDirectory (Wait for Zenworks 6.5?)