


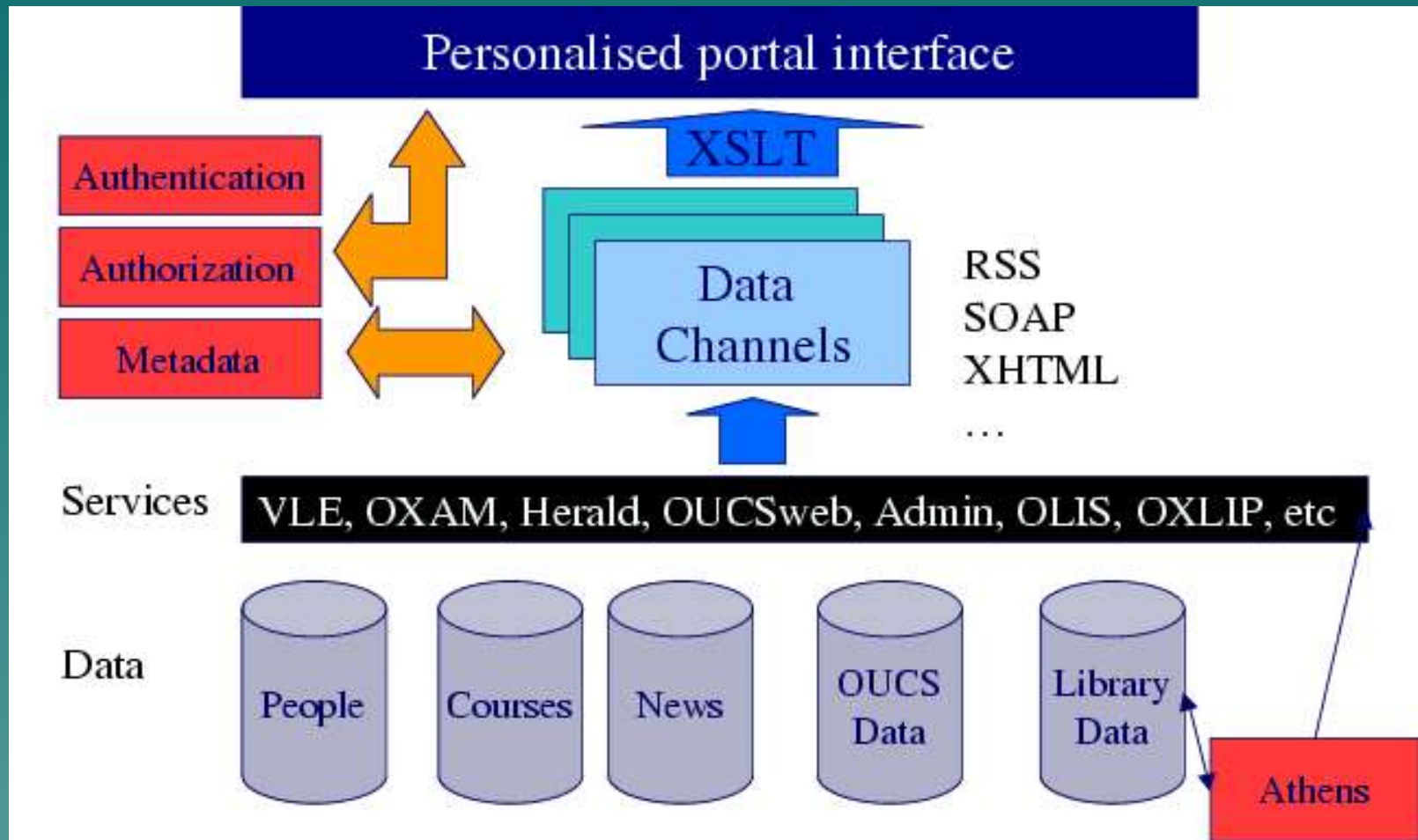
# The Portal Project

Tony Brett  
Associate Head of IT Support Staff  
Services  
Oxford University Computing Services

# Agenda

- ◆ What is a Portal?
  - ◆ Recap of the pilot project
  - ◆ What have we done in the last year?
  - ◆ Demos
  - ◆ Future Work
  - ◆ Questions
- 
- A stylized, layered mountain range graphic in shades of teal and blue, located in the bottom right corner of the slide.

# What is a Portal?



# What is a Portal?

- ◆ Abridged and customized version of Web presence(s) "pocket-sized"
- ◆ Adds "customization" and "community"
- ◆ "deep" content such as library records, museum data, individual images
- ◆ Standards – RSS, WSRP, JSR168
- ◆ Authorisation vs. Authentication

# Portal Pilot – The PIG



- ◆ Early part of 2003
- ◆ set up a fully functional portal framework, based on uPortal
- ◆ Demonstrated how a simple authentication system linked to adequate authorisation data can be integrated into that framework
- ◆ Begun implementation of a fully integrated authentication mechanism
- ◆ Created portal channels for a number of typical information sources
- ◆ Provided seven seminars on portals for the University IT community
- ◆ Explored some of the strategic and administrative issues associated with wide spread take-up of portal technologies

# What have we done since last year?

- ◆ Full production service  
<https://portal.ox.ac.uk>
- ◆ Working with Webauth
  - anyone with a herald account can log in
- ◆ Upgrade to uPortal 2.3.1
  - JSR168 implemented
  - 2.3.2 imminent (available now)

# Staff

- ◆ Two from SERS have joined Portal Project Board
- ◆ Tony Brett project manager on 25% FTE basis
- ◆ Possible link with Beazley Archive being investigated

# Libraries

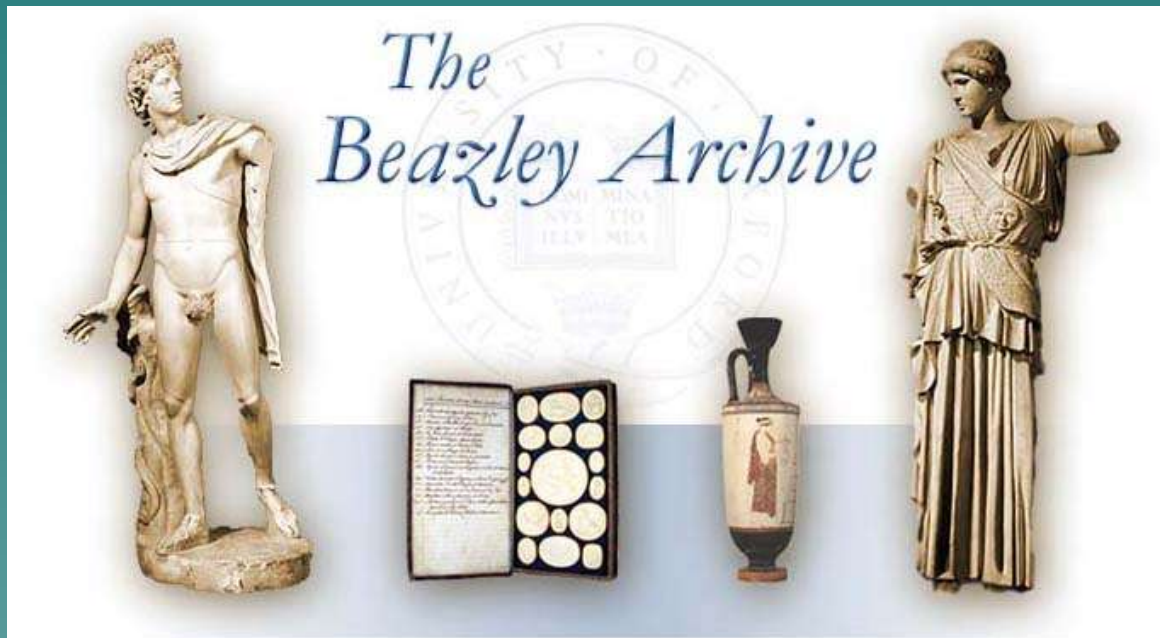
- ◆ Already basic services are provided
  - OLIS Lookup (HTML Proxy)
  - OLIS Status (RSS)
  - Libraries News (RSS)
- ◆ Hope to be able to provide services such as OXAM and TDNet
  - Huge support and security advantage in reducing need to use VPN



# ASUC

## ◆ Beazley Archive

- Extremely rich source of data and images
- Portal could aggregate other services
- Cross-resource searching becomes a possibility

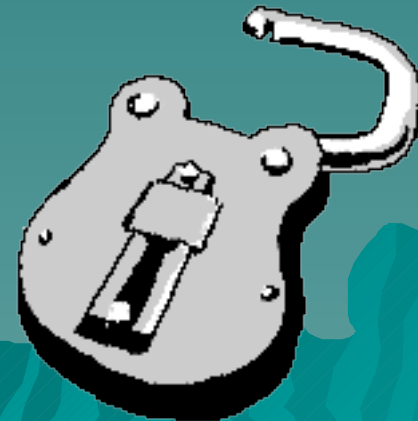
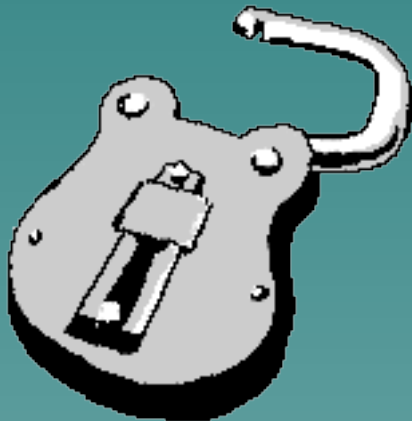


# Graduate Skills Information

- ◆ MPS Division is leading collection and dissemination of skills training available for Graduate Students
- ◆ Portal delivers concise version of data
- ◆ OUCS building database with easy data input and RSS output
  - Chiba XForms
  - RSS Portal Channel but real RSS that can be used on other websites, RSS readers etc.

# Single Sign-on


- ◆ Webauth is here! –Come to workshop on 14<sup>th</sup> July
- ◆ Portal refers to Webauth for authentication but not authorisation
- ◆ Secondary authentication needed for portal apps that need authentication
  - Trust Webauth, not the portal!



# CREE

- ◆ Contextual Resource Evaluation Environment
- ◆ JISC-funded - Hull is Lead Institution
- ◆ Investigating users' requirements with regard to appropriate access points for search and 'resource-push' interfaces
- ◆ Oxford has funding to do its own survey
- ◆ Should ensure the Portal meets real user demands

# Demo

- ◆ RSS Channels
  - ◆ Web Proxy
  - ◆ Inline Frames
  - ◆ X-Form for Graduate Skills Info Service
  - ◆ Graduate Skills RSS Feed
  - ◆ Skins
  - ◆ Channel Manager
- 
- A stylized, layered mountain range graphic in shades of teal and blue, located in the bottom right corner of the slide.


# Future Appearance?

File Edit View Go Bookmarks Tools Help

http://localhost:8080/uPortal/render.userLayoutRootNode.uP

Firefox Help Firefox Support Plug-in FAQ

RTS Shared Calendar Developments in XML Schema ... uPortal 2.3.1 Roma: generating validators for...

 **portal.ox.ac.uk**  
OXFORD UNIVERSITY PORTAL

Welcome Demo User Home View Sitemap Channel Manager Preferences Logout

Portlet Examples Developers News CWebProxy Examples ICC Demo

### Test Portlet 1

This portlet is testing basic functions...

**Testing renderRequest...**  
getAttribute(), setAttribute() and removeAttribute()... #1 passed. #2 passed. #3 passed. **all passed**  
getAttributeNames()... #1 passed. #2 passed. **all passed**

**Testing PortletContext...TBD**

**Testing PortletSession...**  
getAttribute(PORTLET\_SCOPE), setAttribute(PORTLET\_SCOPE) and removeAttribute(PORTLET\_SCOPE)... #1 passed. #2 passed. #3 passed. **all passed**  
getAttributeNames()... #1 passed. #2 passed. **all passed**  
getAttribute(APPLICATION\_SCOPE)... **null**  
setAttribute('globalTestValue', APPLICATION\_SCOPE)... done  
please check in your second portlet whether you get the value 'globalTestValue'. Otherwise an error occurred.

Next >>

>

### Test Portlet 2

This portlet is testing basic functions...

**Testing renderRequest...**  
getAttribute(), setAttribute() and removeAttribute()... #1 passed. #2 passed. #3 passed. **all passed**  
getAttributeNames()... #1 passed. #2 passed. **all passed**

**Testing PortletContext...TBD**

**Testing PortletSession...**  
getAttribute(PORTLET\_SCOPE), setAttribute(PORTLET\_SCOPE) and removeAttribute(PORTLET\_SCOPE)... #1 passed. #2 passed. #3 passed. **all passed**  
getAttributeNames()... #1 passed. #2 passed. **all passed**  
getAttribute(APPLICATION\_SCOPE)... **globalTestValue**  
setAttribute('globalTestValue', APPLICATION\_SCOPE)... done  
please check in your second portlet whether you get the value 'globalTestValue'. Otherwise an error occurred.

Next >>

>

### RSS Portlet

help

- JSR 223: Scripting Pages in Java Web Apps Early Draft Review
- Tales from TheServerSide: Trends in Enterprise Development
- JTux Tuxedo and Java integration package released
- Hibernate In Action Goes Into Production - Chapter Posted on TSS
- Berkeley DB Java Edition released
- JXTA 2.3 released
- J2EE 1.4 SDK Update Release 1 Now Available
- Yet Another Benchmark: Claims of Java being faster than C++
- Shared Java Classes in the JVM
- Exception chaining in JDBC

>

### Google Portlet

# Future Work – ISIDORE

- ◆ Existing student registration (and hence authentication) systems should interoperate with the student administration system
- ◆ Data derived from the student administration system forms the basis for personal profiles within the portal
- ◆ OUCS-ISIDORE Liaison Group has been set up and has met




# Future Work – Lecture Timetables, E-mail

- ◆ Portal should be able to tell each undergrad what lectures are available to them
  - Large complex database needed
  - Course and Lecture categorisation required
  - Logical extension of Graduate Skills project
- ◆ E-mail portlet to show how much mail, how much new etc.



# Future Work – Transcripts

- ◆ Transcripts for OUCS courses should be available soon
  - ◆ ISIDORE data fed into a portlet could be used to produce a print-ready (PDF?) student transcript
  - ◆ Huge time saving for Central Admin and College Offices
- 
- A stylized, layered mountain range graphic in shades of teal and blue, located in the bottom right corner of the slide.

# Future Work – Admin and ITSS Facilities

- ◆ Enabling portal users to update their preferred name, portal preferences etc.
- ◆ ITSS-only facility
  - Enable ITSS to keep own registration up to date
  - Administrative tasks for users in units for which you are registered ITSS
  - Authentication is “Yes, you are Tony Brett” but Authorisation is “Tony Brett is allowed to change passwords for OUCS Staff”. Note Portal does the first not the second

# Resources

- ◆ <https://portal.ox.ac.uk>
- ◆ <http://chiba.sourceforge.net/>
- ◆ <http://www.hull.ac.uk/esig/cree/>
- ◆ <http://www.ja-sig.org/>
- ◆ <http://www.ja-sig.org.uk/>
- ◆ <http://www.uportal.org/>
- ◆ <http://users.ox.ac.uk/~aesb/portal.ppt>

# Questions

